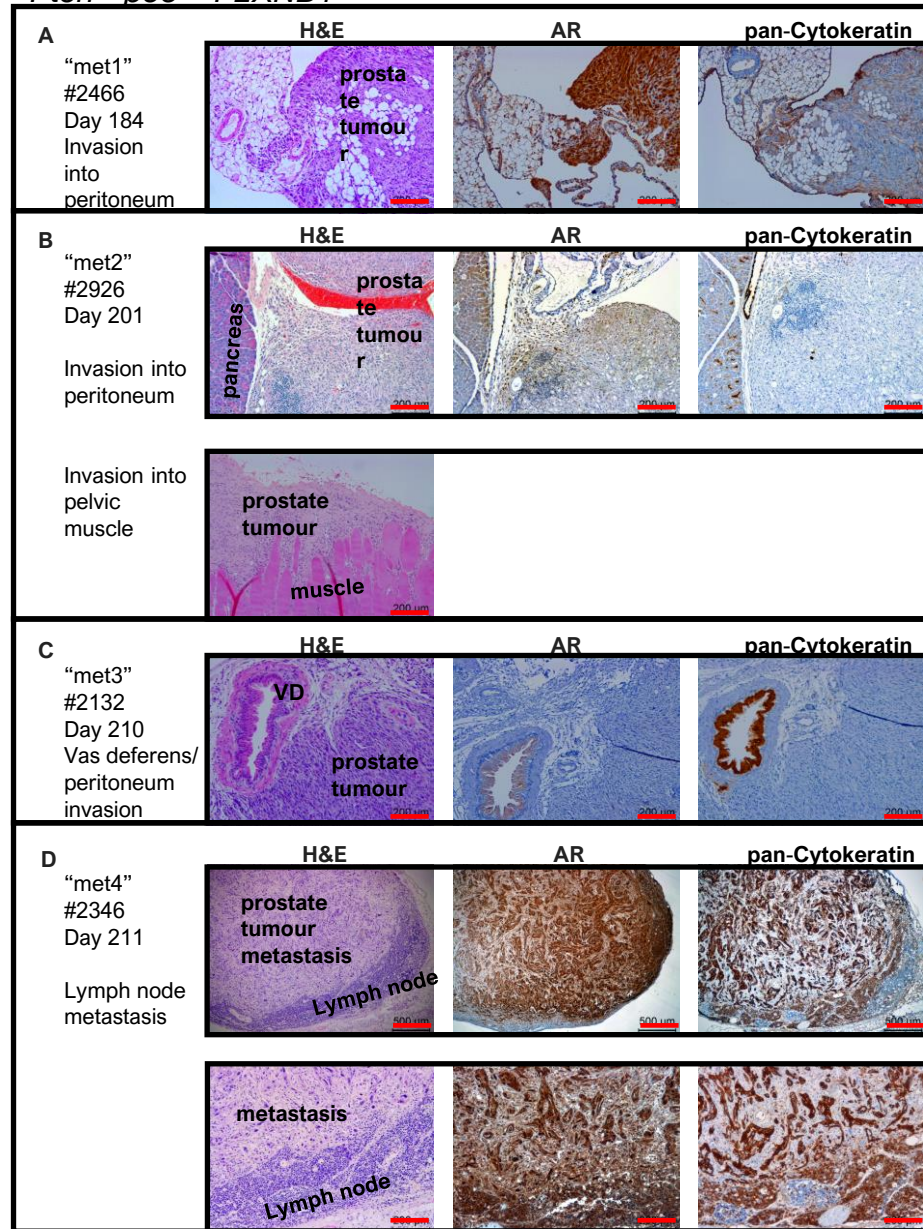
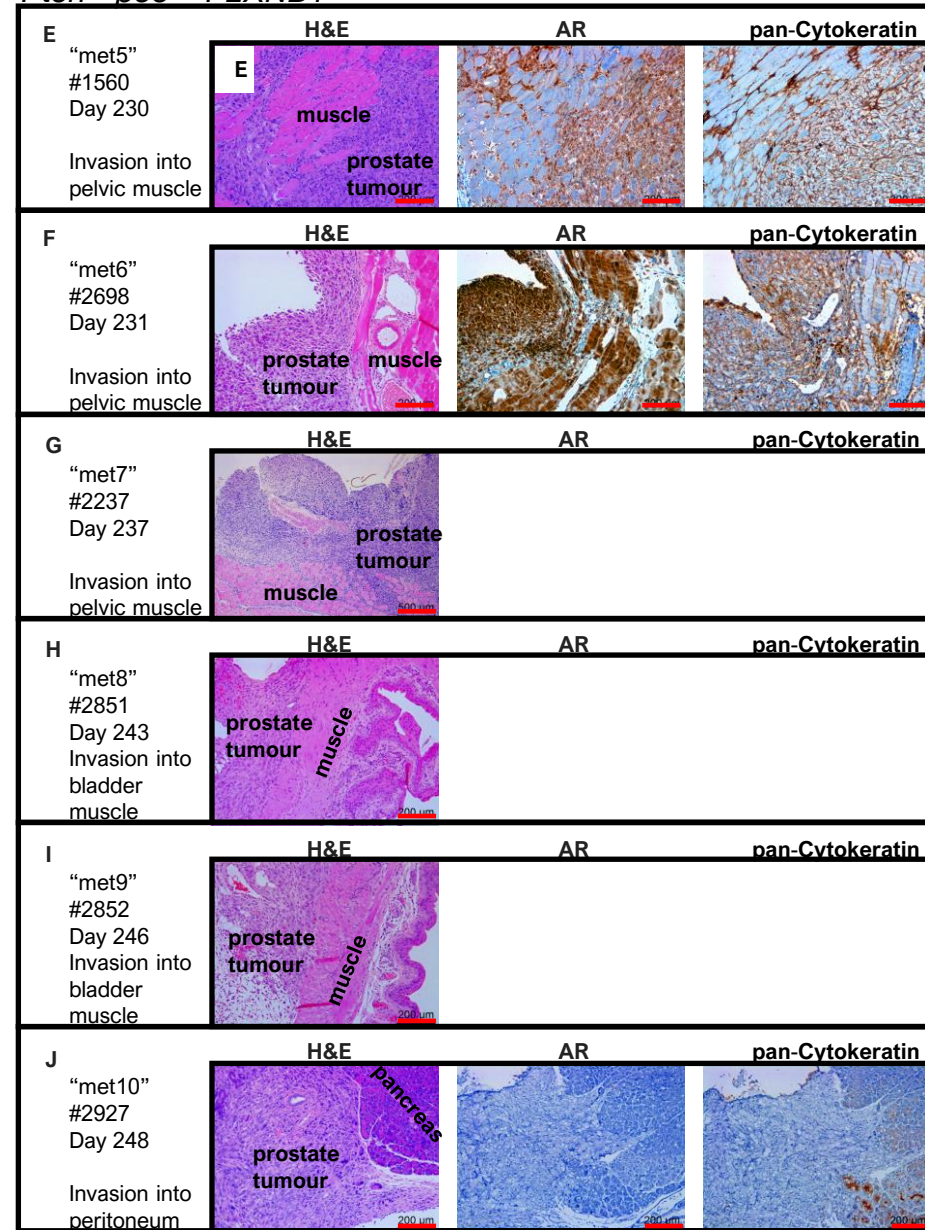
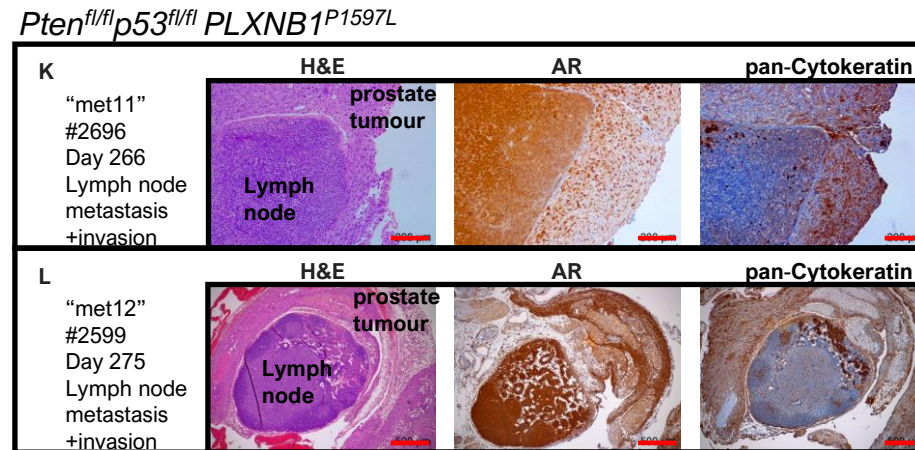


*Pten<sup>fl/fl</sup>p53<sup>fl/fl</sup>PLXNB1<sup>P1597L</sup>*



*Pten<sup>fl/fl</sup>p53<sup>fl/fl</sup>PLXNB1<sup>P1597L</sup>*





**Supplementary Figure 7. Metastatic deposits in *Pten<sup>fl/fl</sup>p53<sup>fl/fl</sup>PLXNB1<sup>P1597L</sup>* mouse cohort stained for H&E, androgen receptor (AR) and pan-cytokeratin.** Metastatic deposits were observed in twelve *Pten<sup>fl/fl</sup>p53<sup>fl/fl</sup> PLXNB1<sup>P1597L</sup>* cohort animals, met1 (#2466, 172 days old, **A**), met2 (#2926, 201 days old, **B**), met3 (#2132, 210 days old, **C**), met4 (#2346, 211 days old, **D**) met5 (#1560, 230 days old, **E**) met6 (#2698, 231 days old, **F**) met7 (#2237, 237 days old, **G**) met8 (#2851, 243 days old, **H**) met9 (#2852, 246 days old, **I**) met10 (#2927, 248 days old, **J**) met11 (#2696, 266 days old, **K**) met12 (#2599, 275 days old, **L**). H&E (left image), AR (middle image) and pan-cytokeratin (right image). Scale bars are 200µm apart from **D** (upper row), **G** and **L** (500 µm)