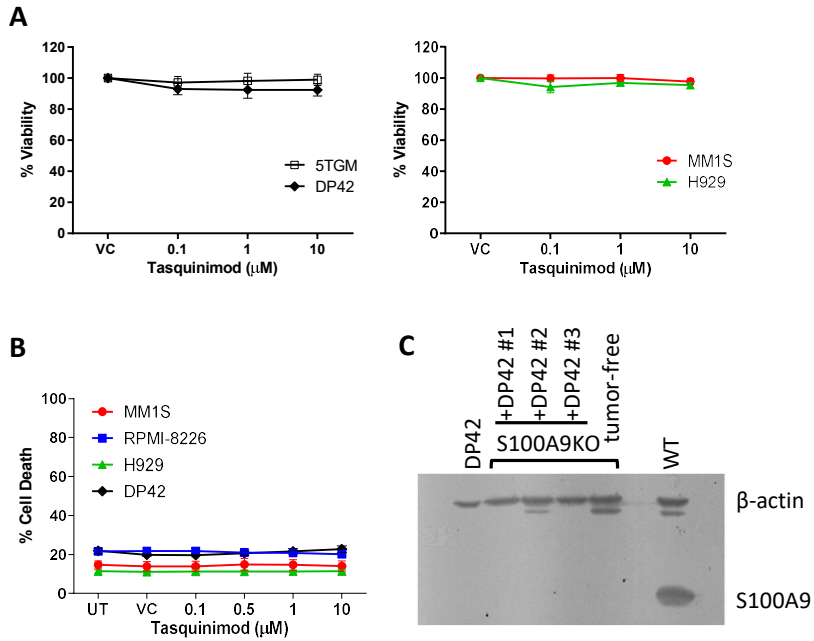


Supplementary Figure S8



Supplementary Figure S8. Effect of TQ on MM cells. (A) Viability of MM cells was determined by MTT assay after 48h treatment with indicated concentrations of TQ or vehicle control (VC, DMSO). (B) Apoptosis of MM cells evaluated by Annexin V binding assay after 24h of treatment with TQ or VC. UT – untreated cells. Individual values, mean, and SEM values are shown. (C) Expression of S100A9 protein was determined by western blotting in DP42 cells cultured *in vitro* (DP42) and in BM cells from 3 individual DP42-bearing S100A9KO mice isolated 2 weeks after tumor cell injection (S100A9KO+DP42). In control, BM cells isolated from tumor-free S100A9KO mice and WT mice were used.