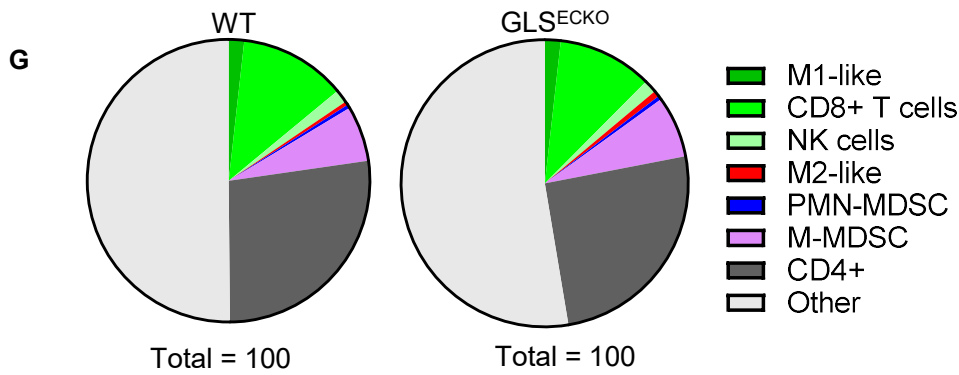
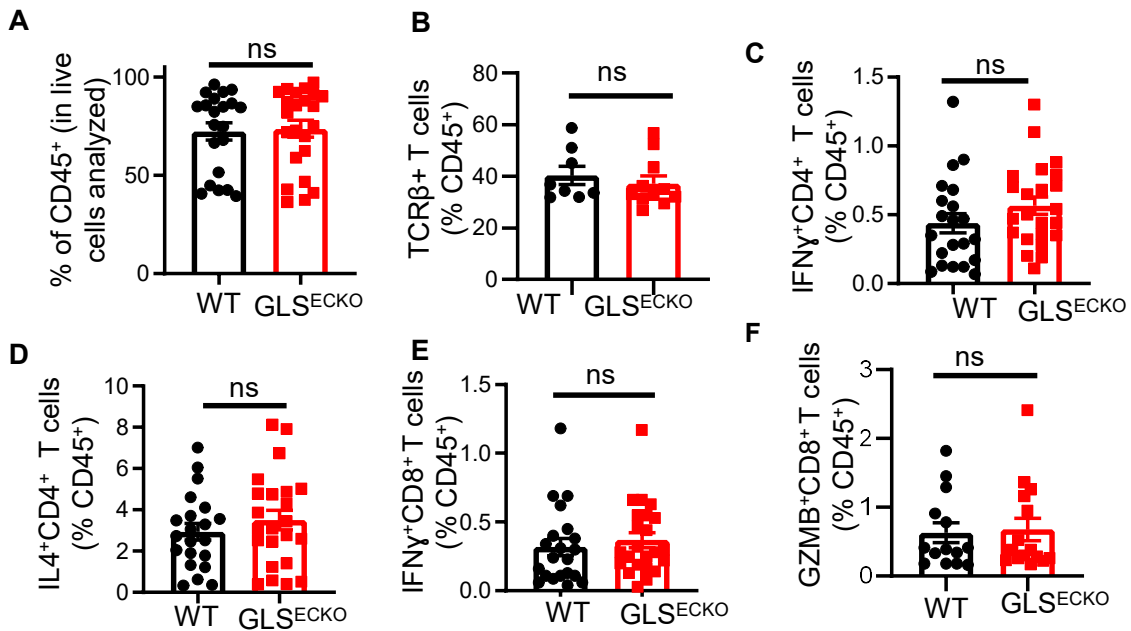
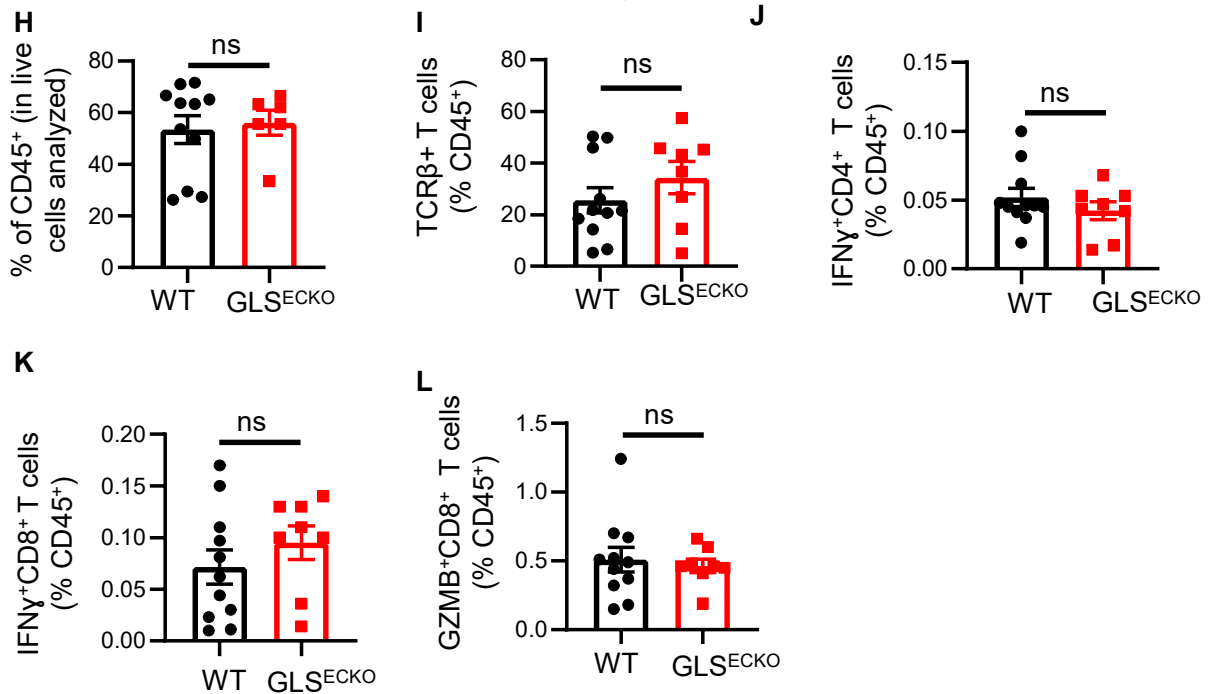


E0771



MMTV-PyMT



Supplementary Fig. S3: Endothelial GLS deletion does not appear to affect tumor infiltrating immune cells. E0771 tumors (**A-G**) or PyMT tumors (**H-L**) were harvested from WT or GLS^{ECKO} mice. Tumor infiltrating immune cells were quantified by flow cytometric analyses, including CD45⁺ cells (**A** and **H**), T cells (**B** and **I**), Th1 and Th2 CD4 T cells (**C**, **D**, and **J**), IFN γ ⁺ and GZMB⁺ CD8 T cells (**E**, **F**, **K**, and **L**). Percentages of different cell types within the E0771 tumors are presented in the pie chart (**G**). All data are presented as mean \pm SEM from 2 of 3 independent experiments. ns, not significant as determined by two-tailed unpaired Student's t-test.