

NEW 1997 Novocastra Antibodies

CD3 Recognized as a versatile pan-T cell marker, this rat monoclonal antibody is *highly effective on frozen and paraffin-embedded tissues*. Since this antibody was raised against a conserved peptide sequence of CD3, *cross-reactivity occurs with several species* including mouse, chicken, dog, horse and human. (NCL-CD3-12)

CD8 Specific for the CD8 antigen expressed on human suppressor/cytotoxic T cells, this monoclonal antibody was developed *for use on routinely fixed paraffin-embedded and frozen tissue sections*. This clone (4B11) is also recommended for western blotting. (NCL-CD8-4B11)

p27 PROTEIN This monoclonal antibody was developed against a recombinant protein and is *extremely useful in evaluating p27 protein (Kip1) expression levels* in the assessment of cell proliferation. This antibody may be used on paraffin-embedded tissues for immunohistochemistry and for immunoblotting. (NCL-p27)

MELAN A Human specific, this monoclonal antibody recognizes the recently described *melanocyte differentiation antigen, melan A*, expressed in more than 80% of melanomas. Immunohistochemical reactivity is cytoplasmic in skin melanocytes and melanomas using frozen and paraffin-embedded tissues. (NCL-MelanA)

CYCLIN B1 Optimized for paraffin-embedded tissues using immunohistochemistry, this monoclonal antibody is an *ideal marker of proliferating cells* in the G2 to M cell cycle transition phase. Immunoreactivity is cytoplasmic. This antibody is also suitable for western blotting. (NCL-CYCLIN B1)

Please contact our Technical Service Department for further information on antibody specifications or to receive the complete Novocastra Laboratories 1997 catalog, featuring over **350** monoclonal and polyclonal antibodies.
These products are for research use only.



Exclusive U.S. and Canadian Distributor

VECTOR LABORATORIES, INC.

30 Ingold Road
Burlingame, CA 94010
(415) 697-3600 Fax: (415) 697-0339
e-mail: vector@vectorlabs.com

VECTOR LABORATORIES, LTD.

16 Wulfric Square, Bretton,
Peterborough PE3 8RF U.K.
(01733) 265530 Fax: (01733) 263048

VECTOR LABORATORIES (CANADA) INC.

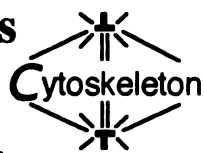
3390 South Service Road.,
Burlington, Ontario, L7N 3J5
(905) 681-0900 Fax: (905) 681-0166
e-mail: vectorca@netinc.com



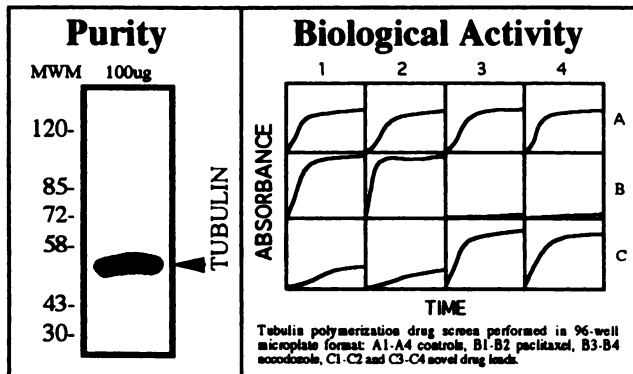
**CANCER GENETICS
STANFORD MEDICAL SCHOOL**

The Departments of Medicine and Genetics are searching for candidates for a tenure track faculty position at the rank of assistant or associate professor. The ideal candidate will have an MD with clinical training in medical oncology and a strong background and research accomplishments in the field of molecular genetics. We are especially interested in investigators who can explore the emerging human genome sequence information in innovative ways. A generous start-up package for an independent laboratory research program is available. Participation in clinical care activities in medical oncology and teaching in genetics will be expected. Stanford University is committed to increasing representation of women and members of minority groups on its faculty and particularly encourages applications from such candidates. Please send curriculum vitae, a statement of career plans, and three names of references to: Ronald Levy, MD, Chief, Division of Oncology, Stanford University School of Medicine, SUMC M211, Stanford, CA 94305-5306.

**Cytoskeletal Proteins
for Cancer Research and
Drug Screening Programs.**



Cytoskeleton is the world leader in the production of pure, biologically active cytoskeletal proteins. Current products include tubulin (see figure), actins (including non-muscle isoforms) and intermediate filament proteins. Products have also been developed into user friendly kits:



These products are available for basic research and in quantities suitable for drug screening applications. Cytoskeleton also offers a customized drug screening service.

Quality and Experience counts, give us a call.

Tel: 303-322-2254

E-mail: Cytoskeleton@mho.net

THE WORLD DEPENDS ON THE

Commitment

Of Our Scientists.

It takes world-class employees to make a world-class company.

At Abbott Laboratories, our professionals are researching, developing and marketing the health care products that will make a significant impact on generations to come. We are currently seeking an Associate Tumor Pharmacologist to join our team.



**ASSOCIATE
TUMOR
PHARMACOLOGIST**

We are seeking a pharmacologist to plan and execute animal models of cancer diseases. Specific duties include inoculation, medication, surgery and necropsy of lab animals. The ability to work in a team environment is essential.

We require a B.S. or M.S. in a Biological Science and experience with common lab rodents. Familiarity with cancer, infectious diseases, drug efficacy trials and drug development is necessary. Surgical experience is a plus. Some weekend and evening work will be required.

With 52,000 employees worldwide and more than \$11 billion in annual sales, we've established ourselves as a respected global business and innovative leader in the changing health care industry. We are located in an attractive suburban area, approximately 30 miles north of Chicago. For consideration, please send your resume with salary history to: **Abbott Laboratories, Job #97-LAM-0751, D583, AP9A(LL), 100 Abbott Park Rd., Abbott Park, IL 60064.** Abbott is an Affirmative Action Employer/ Smoke-Free Environment.

