

Anti-tumor Plant Alkaloids and Derivatives

(Minimum 98%)
Paclitaxel
Baccatin III
Homoharringtonine
Harringtonine
Vinblastine Sulfate Salt
Vincristine Sulfate Salt
Camptothecin
Arteannuin

Crude Paclitaxel
From *Taxus Yunnanensis*
1%, 5%, 35% and 60%

Any Quantity
Competitive Pricing
Fast Delivery

CBitech, Inc.
324 Rindge Avenue
Cambridge, MA 02140
Toll Free: 1-888-735-1223
Fax: 617-492-5765
E-Mail: cbl.tech@worldnet.att.net

AMERICAN ASSOCIATION FOR CANCER RESEARCH

The American Association for Cancer Research (AACR) is a professional society of over 11,000 scientists and physicians involved in all aspects of basic, clinical, and translational cancer research. Members of the AACR enjoy

- subscriptions to *Cancer Research*, *Cell Growth & Differentiation (CG&D)*, *Cancer Epidemiology, Biomarkers & Prevention*, and *Clinical Cancer Research* at reduced member rates
- reduced registration rates at the AACR Annual Meeting, Special Conferences, and International Meetings
- Employment Register, Directory of Members, public education activities, and many other benefits

Special programs to provide enhanced career development opportunities for minority scientists include

- **Session on Career Development at Annual Meeting**
- **Mentorship Program**
- **Travel Awards to Scientific Meetings**

American Association for Cancer Research
Public Ledger Building, Suite 816
150 S. Independence Mall West
Philadelphia, PA 19106-3483
Telephone: (215) 440-9300
FAX: (215) 440-9313 / E-Mail: aacr@aol.com

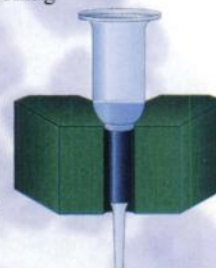
Carcinoma Cell Enrichment

Enabling Detection and Analysis of Tumor Cells from Peripheral Blood

Miltenyi Biotec introduces the best way to enrich disseminated carcinoma cells from human peripheral blood or bone marrow. With the MACS magnetic enrichment system you can detect, quantify and analyze tumor cells 10-100 times more sensitive than with current methods.

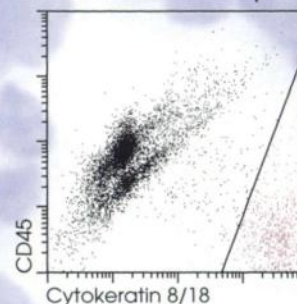
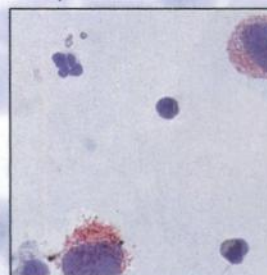
Find 1 Cell in 10 Million with MACS Magnetic Technology

Using MACS colloidal MicroBeads, 10,000 fold enrichment of carcinoma cells can be achieved. Instead of screening dozens of slides, you analyze a few thousand cells from the magnetically enriched fraction.



Enrichment
by MACS

Analysis



Compatible with Immunocytochemistry, Flow Cytometry and PCR

The MACS process preserves the cell morphology, so tumor cells can easily be identified and enumerated by microscopy.

MACS Antibody MicroBeads are so small that they don't affect cell detection and analysis by flow cytometry, immunocytochemistry or PCR.

To enrich carcinoma cells for detection or analysis, call Miltenyi Biotec

Germany:
Phone 02204 - 8306-0
FAX 02204 - 85197

USA:
Phone (800) FOR MACS
FAX (916) 888 - 8925

For local distributor call: +49 - 2204 - 8306-0

Miltenyi Biotec



Circulating Cancer Cells

- **Simple, Rapid Method**

Cells are isolated from blood or bone marrow MNC's in less than one hour, without expensive equipment or repeated disposables costs.

- **Effective Enrichment**

> 1000 fold enrichment allows increased data per cytospin, screening of larger samples and higher sensitivity for immunocytochemical or molecular techniques.

- **Viable Cells**

The gentle technique leaves cells viable and intact, ready for direct use in PCR and RT-PCR. The enrichment effect means increased sensitivity and decreased background noise.

Dynabeads® anti-Epithelial Cell -

Biomagnetic separation technology for the enrichment and detection of circulating epithelial tumour cells in micrometastasis research.



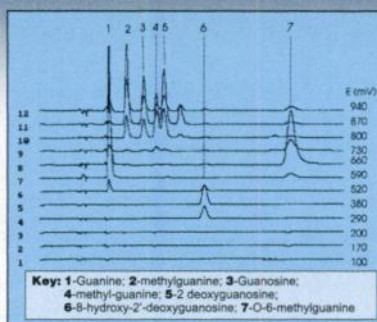
*Making Complicated Bioseparations
Simple, Rapid and Reliable*



DNA VANDALS!

When radicals meet DNA, the results can be shattering! But measuring ROS doesn't have to be.

ESA can help you study Reactive Oxygen Species' (ROS) role in neurological disorders, aging, cancer, apoptosis and more. With HPLC/coulometric detection you can monitor damage to DNA directly by measuring hydroxy guanine adducts, and determine free radical levels by the conversion of salicylate to DHBA.



Analysis with ESA's Coulochem® and CoulArray™ systems is highly sensitive, fast, eliminates ³²P

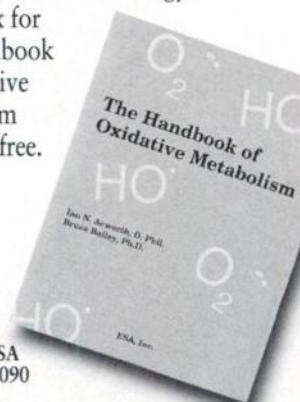
and minimizes sample preparation.

So let ESA help you put it together, with the big picture on advanced ROS analytical methodology.

Call or fax for The Handbook of Oxidative Metabolism today. It's free.



22 Alpha Road
Chelmsford, MA 01824-4171 USA
(508) 250-7000 Fax: (508) 250-7090
<http://www.esainc.com>



See us at AAPS, Booth #316

MEETING ANNOUNCEMENT

6TH BIENNIAL
SYMPOSIUM ON
MINORITIES,
THE MEDICALLY
UNDERSERVED &
CANCER

April 23-27, 1997
HYATT REGENCY
WASHINGTON, D.C.
ON CAPITOL HILL

**THE ONLY NATIONAL MULTICULTURAL FORUM
ADDRESSING THE CANCER CRISIS IN OUR COMMUNITIES!**

Offering scientific and educational general sessions, technical assistance and demonstration workshops, student mentoring programs, educational exhibits, library and resources center, awards programs, & networking opportunities.

TOPICS... Major Cancer Sites Research, Prevention and Treatment Updates, Health and Lifestyle Issues, Health Services Research, Information Technologies, Managed Care, Survivorship, Model Intervention Programs, Public Policy, & Educational Materials.

**CALL FOR ABSTRACTS DEADLINE:
DECEMBER 16, 1996**

Oral and Poster Presentations

Abstracts should address the special needs of minorities and medically underserved populations.

FOCUS...

- 1) Basic to applied research including laboratory, clinical, and behavioral
- 2) Community-based program research and evaluation

CONTINUING EDUCATION OPPORTUNITIES

For abstract and registration information contact:

RUTH SANCHEZ • 6TH BIENNIAL SYMPOSIUM

1720 Dryden, Suite C • Houston, Texas 77030

Tel (713) 798-5383, Fax (713) 798-3990

e-mail: symposium@bcm.tmc.edu

AFTER OCT. 1 ON WORLD WIDE WEB: <http://icc.bcm.tmc.edu/symposium/>

PRESENTERS TO DATE: Baylor College of Medicine • UT MD Anderson Cancer Center • Howard University Hospital • American Cancer Society • Susan G. Komen Breast Cancer Foundation • Leukemia Society of America • National Marrow Donor Program • Cancer Research Foundation of America • Kellogg Company • Bristol-Myers Squibb Company • Zeneca Pharmaceuticals • In association with the *Intercultural Cancer Council* • Centers for Disease Control and Prevention • DHHS/Office of Minority Health • Environmental Protection Agency • National Institutes of Health and a large network of national and community-based Symposium partners.

THE SURGERY BRANCH, NATIONAL CANCER INSTITUTE, NIH, IS SEEKING PATIENTS FOR ONGOING CLINICAL TREATMENT PROGRAMS.

PATIENTS WITH THE FOLLOWING MALIGNANCIES ARE BEING TREATED UNDER COMBINED MODALITY OR INNOVATIVE IMMUNOTHERAPY PROGRAMS:

- METASTATIC MELANOMA AND KIDNEY CANCER •
- STAGE II OR LOCALLY ADVANCED BREAST CANCER •
- METASTATIC COLORECTAL CANCER TO THE LIVER •
- LOCOREGIONAL GASTRIC OR PANCREATIC CANCER •
- MESOTHELIOMA, PULMONARY METASTASES, STAGE IIIA, B LUNG CANCER
OR ESOPHAGEAL CANCER •
- LOCALIZED SOFT TISSUE SARCOMAS •
- PERITONEAL CARCINOMATOSIS •

**NATIONAL
CANCER
INSTITUTE**

CARE FOR ALL PATIENTS IS PROVIDED AT THE CLINICAL CENTER, NIH, BETHESDA, MARYLAND.

FOR MORE INFORMATION ON CANCER PROGRAMS, PLEASE CALL
(301) 496-1533

A PUBLIC SERVICE ANNOUNCEMENT COURTESY OF THIS PUBLICATION

NATIONAL CANCER INSTITUTE
DIVISION OF EXTRAMURAL ACTIVITIES
ROCKVILLE, MARYLAND

Opening Date: September 23, 1996

Closing Date: November 22, 1996

Announcement Number: CA-96-0097

DEPUTY DIRECTOR, DIVISION OF EXTRAMURAL ACTIVITIES

The Division of Extramural Activities (DEA), National Cancer Institute (NCI), National Institutes of Health (NIH), is seeking candidates for the position of Deputy Director. The selected scientist will be responsible for the day-to-day scientific management of the Division which conducts the scientific review and evaluation of grant and cooperative agreement applications and contract proposals in response to the programmatic initiatives of the NCI. The extramural research funded by the NCI supports a broad program of activities designed to increase knowledge of the causes, prevention, control, diagnosis and treatment of cancer. The Division has an annual budget of approximately \$10 million and a staff of approximately 95 persons.

This is a Civil Service position in the Senior Executive Service (SES) with annual salary compensation between \$100,526 to \$122,688 per annum. In addition, physicians may be eligible for a Physicians Comparability Allowance up to \$20,000 per annum (if applicable). (Applicants alternatively may be eligible for appointment in the Commissioned Corps of the U.S. Public Health Service.) The individual selected, if not presently in SES, must serve a one-year probationary period.

Applicants must meet the minimum qualifications requirements. Applicants must further meet established mandatory professional/technical and managerial/executive requirements. Applicants will be further evaluated on the degree to which they possess additional desirable qualifications in the areas of professional/technical qualifications, managerial/executive qualifications, scientific reputation/peer recognition, training and education, and honors and awards. A copy of the requirements may be obtained by contacting Ms. Toni McKeown in the Human Resources Management and Consulting Branch, NCI, at (301) 402-2812.

Applications/resumes are to be sent to the above individual at:

National Cancer Institute (0097)
Human Resources management and Consulting Branch
6120 Executive Boulevard
EPS/Room 550
Rockville, Maryland 20852

A current curriculum vitae and bibliography must accompany all applications/resumes for entrance into the SES. In addition, applicants are encouraged to complete the DHHS Applicant Background Survey form (completion of this form is voluntary). You may contact Ms. McKeown on the above number to obtain a copy of this form. Applications will be accepted for a period of 60 days following the opening date of the announcement.

Public Health Service Commissioned Officers wishing to enter the SES must follow the above procedures. Officers interested in performing the duties of the position within the Commissioned Corps may submit a resume to the above address.

Four Essential Journals from the AACR

Priority reading for over 50 years –
cited more than any other journal
in its field

CANCER RESEARCH

Vol. 57, 1997 (24 issues)
ISSN 0008-5472

Editor-in-Chief:
Carlo M. Croce, M.D.

- State-of-the-art laboratory and clinical investigations
- Advances in Brief
- Selected review articles

AACR members: \$90;
Outside Americas: \$160
Individual nonmembers: \$460;
Outside U.S.: \$550
Institutions: \$685; Outside U.S.: \$815

Institutional subscriptions include a subscription to *Clinical Cancer Research*. Available only as a combined subscription. *Proceedings of the AACR* is included in Individual nonmember and Institutional subscriptions to *Cancer Research*.

A major resource on the
molecular biology of cancer

CELL GROWTH & DIFFERENTIATION

Vol. 8, 1997 (12 issues)
ISSN 1044-9523

Editor-in-Chief:
George F. Vande Woude, Ph.D. (Until 12/31/96)
Joseph R. Nevins, Ph.D. (Beginning 1/1/97)

- Original *in vitro* and *in vivo* studies of the molecular biology of cancer, including normal and abnormal cellular processes
- Research Capsules
- Viewpoints

AACR members: \$60;
Outside Americas: \$90
Individual nonmembers: \$105;
Outside U.S.: \$145
Institutions: \$280; Outside U.S.: \$320

An up-to-the-minute journal
spanning three vital fields

CANCER EPIDEMIOLOGY, BIOMARKERS & PREVENTION

Vol. 6, 1997 (12 issues)
ISSN 1055-9965

Editor-in-Chief:
Pelayo Correa, M.D.

- Original research on causes and prevention of cancer in humans
- Invited editorials
- Selected review articles
- Short communications
- Meeting reports

AACR members: \$55;
Outside Americas: \$85
Individual nonmembers: \$95;
Outside U.S.: \$135
Institutions: \$245; Outside U.S.: \$285

An exciting new forum for clinical
and translational cancer research

CLINICAL CANCER RESEARCH

Vol. 3, 1997 (12 issues)
ISSN 1078-0432

Editor-in-Chief:
John Mendelsohn, M.D.

- Research articles
- Advances in Brief
- Minireviews
- Controversies in Clinical Cancer Research

AACR members: \$50;
Outside Americas: \$80
Individual nonmembers: \$105;
Outside U.S.: \$145
Institutions: \$685; Outside U.S.: \$815

Institutional subscriptions include a subscription to *Cancer Research*. Available only as a combined subscription.

ORDER TODAY!

**Members, American Association
for Cancer Research:**

To place your order, contact the AACR at
(215) 440-9300; FAX (215) 440-9313.

Members subscribing to any AACR journal automatically receive the *Proceedings of the AACR*.

Institutions: Purchase all four journals and save 15% off the total subscription price, excluding postage outside U.S.
Canada: Add 7% GST to all orders. MD: Add state sales tax.

Nonmembers, contact:

FULCO, Inc.

P.O. Box 3000, Denville, NJ 07834

1-800-875-2997 or (201) 627-2427

FAX (201) 627-5872

