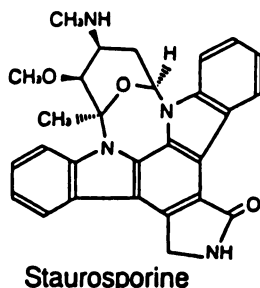
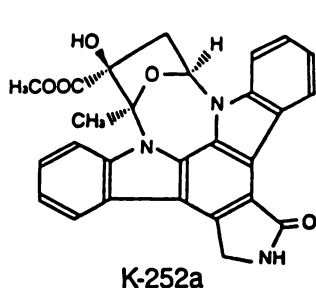


## PROTEIN KINASE INHIBITORS

K-252a and Staurosporine, microbial alkaloids, are potent inhibitors of protein kinases, with  $K_i$  of 0.7 ~ 25 nM.



- Purity : > 99%
- Solubility: Readily soluble in DMSO and DMF
- Stability : Stable at room temperature, store protected from light.

To order or to request information:  
By telephone, mail or FAX

**KAMIYA BIOMEDICAL COMPANY**  
P.O. Box 6067, Thousand Oaks, CA 91360  
Phone (818) 706-8564, FAX (818) 706-8763

## New Advances in Cancer Research

Triton c-erbB-2  
(or HER-2/neu)  
Antibodies

NEW  
MONOCLONAL  
AVAILABLE

**Amplification** of c-erbB-2 may indicate the progression of some human breast cancers and may be predictive for clinical outcome.

Triton's c-erbB-2 monoclonal and polyclonal antibodies perform in immunohistochemical analysis in formalin-fixed or frozen tissues. Also for FACS, RIPA and Western blot applications.

1501 Harbor Bay Parkway  
Alameda, CA 94501  
1-800-874-8667  
1-800-682-6200 (CA only)



FOR RESEARCH ONLY  
Not for use in diagnostic  
procedures.

Triton Biosciences Inc.<sup>™</sup>  
A Subsidiary of Shell Oil Company



## SUBSCRIPTION QUESTIONS OR PROBLEMS?

Call us on our **free** line, 1-800-638-6423 to get your problem solved. In Maryland call 1-800-638-4007.

We can help you most efficiently if the mailing label from your latest issue is in front of you when you call. If the problem concerns your payment, please have your canceled check in front of you so that we can solve the problem over the phone. For speedier service, refer to the six digit number at the end of the top line of your address label.

Subscription Fulfillment Department  
Williams & Wilkins  
428 East Preston Street  
Baltimore, Maryland 21202



## ASSISTANT/ASSOCIATE PROFESSORSHIPS IN PHARMACOLOGY

The University of Pittsburgh School of Medicine has embarked upon a major program to expand the Department of Pharmacology. Two tenure track positions are available for the next academic year (1989-90). Applicants will be expected to develop a vigorous research program, participate in the medical and graduate programs, and to interact with existing clinical and basic science projects.

Previous experience in lung and cancer pharmacology are of particular interest, although candidates in all areas of pharmacology will be considered.

Applicants should forward a letter of application, curriculum vitae, description of research interests, and the names of three references to:

Search Committee  
University of Pittsburgh  
School of Medicine  
Department of Pharmacology  
518 Scaife Hall  
Pittsburgh, PA 15261

The University of Pittsburgh is an Affirmative Action/Equal Opportunity Employer. **Deadline for application is June 15, 1989.** Appointment may begin September 1, 1989.