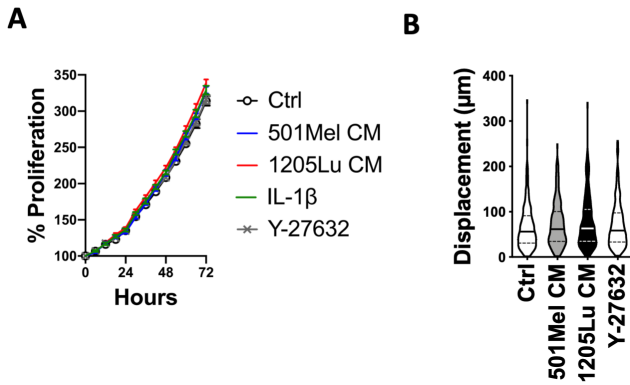


# Fig. S7



**Figure S7. LN-F reprogrammed by dedifferentiated melanoma cells do not affect melanoma proliferation and migration.**

(A) Proliferation of 1205Lu Red cells on a confluent monolayer of LN-F treated previously with Ctrl medium, melanoma CM, IL-1 $\beta$  (2 ng/ml) or Y-27632 (10  $\mu\text{M}$ ) followed by real time imaging for 72h (n=4 in triplicate, 4 images/sample).

(B) Displacement of 1205Lu Red cells on a confluent monolayer of LN-F treated previously with Ctrl medium, melanoma CM or Y-27632 (10  $\mu\text{M}$ ) followed by real time imaging for 24h (n=4, 4 images/sample with 130 cells/image).