

Fig. S2

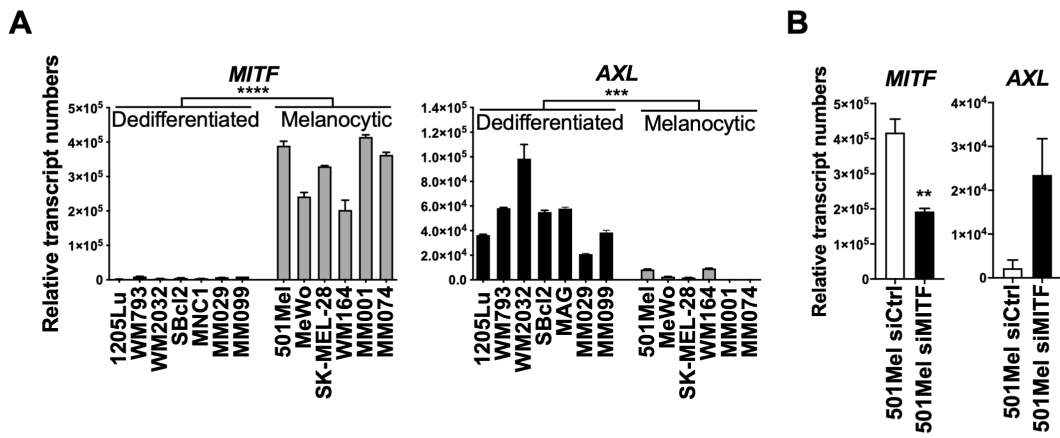


Figure S2. Characterization of the melanocytic / dedifferentiated signature of human melanoma cells.

qRT-PCR analysis of *MITF* and *AXL* gene expression in (A) human melanoma cell lines and short-term melanoma cells isolated from patients (n = 2, in duplicate; mean +/- SEM; p-Val (***)<0.001, (****)<0.0001), (B) 501Mel cells silenced for 3 days for *MITF* expression by siRNA (siMITF) or a control siRNA (siCtrl) (n = 3, in duplicate; mean +/- SEM; p-Val (**)<0.01).