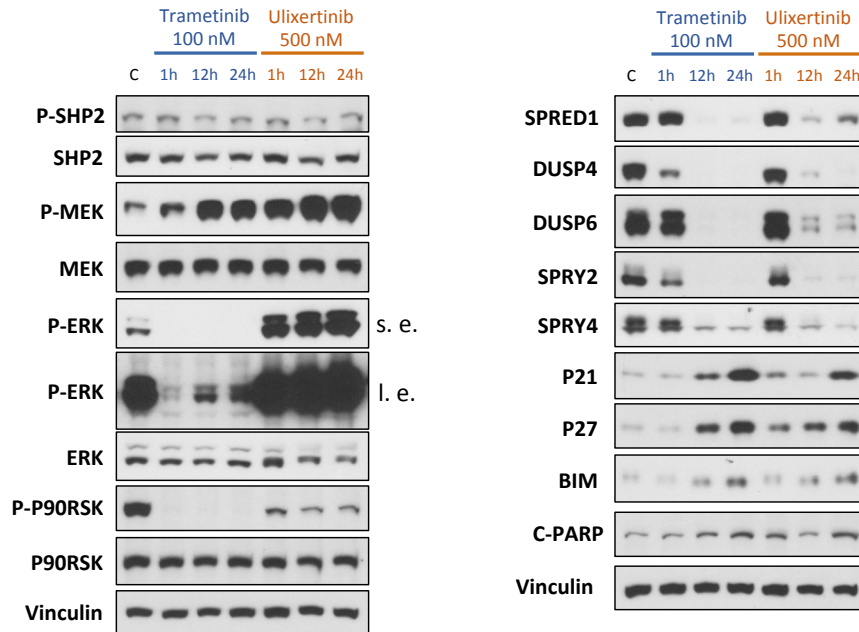


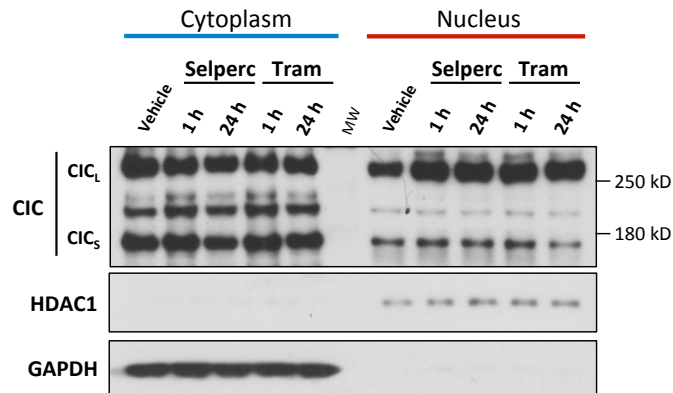
Supplementary Figure S5

A

HMSC-RET



B



Supplementary Figure S5. Effect of MEK and ERK inhibitors on MAPK pathway regulators and subcellular localization of CIC. A. HMSC-RET cells were treated with 100 nM trametinib or 500 nM ulixertinib for the indicated times and then whole-cell extracts prepared for western blotting analysis. One representative immunoblot from two independent experiments is shown for each protein. s.e. – shorter exposure, l.e. – longer exposure. **B.** HMSC-RET Cells were treated with 100 nM selpercatinib and 100 nM trametinib for 1 h or 24 h, and then cytoplasmic and nuclear extracts prepared separately for western blotting. GAPDH represents a cytoplasmic protein loading control and HDAC1 represents a nuclear protein loading control. Selperc: selpercatinib, 100 nM, Tram: trametinib, 100 nM.