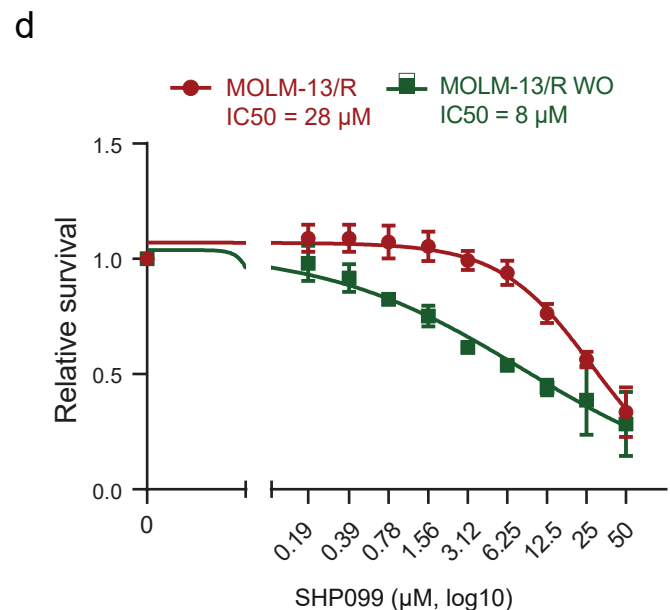
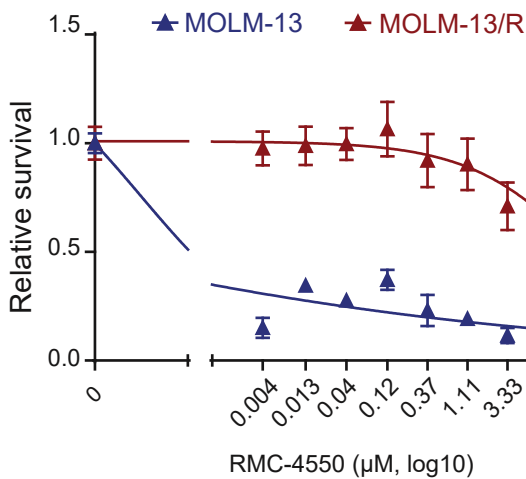
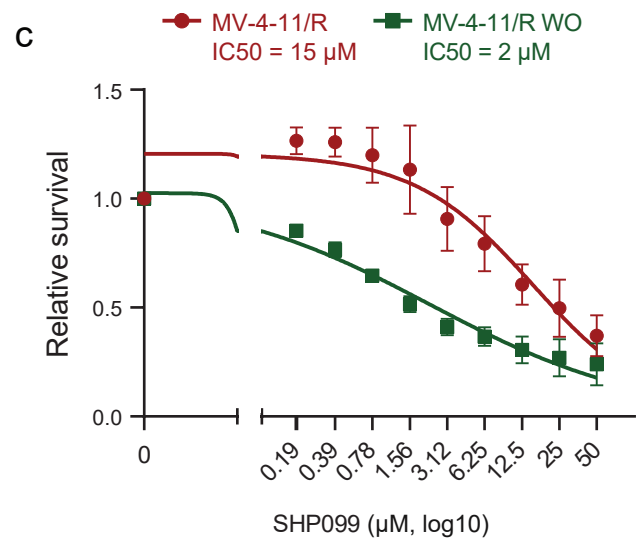
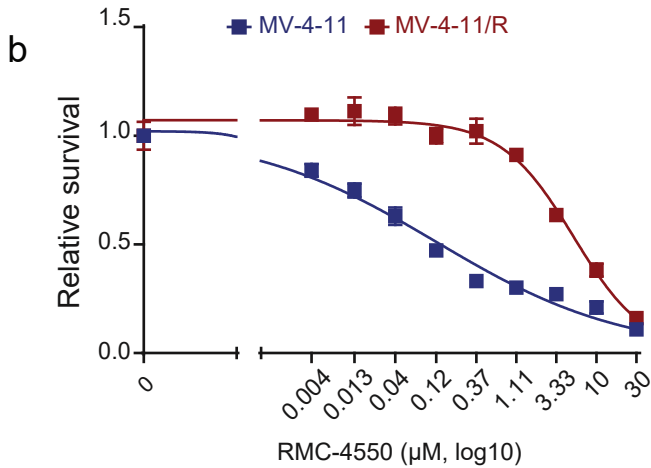


a

Cell line	SHP099	Lineage	(R)TK mutations/fusions	RAS/RAF/NF1 mut	Other MAPK mut
MV-4-11	Sensitive	Myeloid monocytic	FLT3-ITD homozygus	WT	ECSIT R35C GNA12 P152A
MOLM-13	Sensitive	Myeloid monocytic	FLT3-ITD heterozygus	NF1 E1720D	CACNA1C R2023Q RASAL2 D797G



IC50 (µM)	MV-4-11	MOLM-13
Par RMC	0.2	ND
Res RMC	5	26

Supplementary Figure S1.

a) Overview of the cell lines of choice.

b) Survival assays of parental and acquired resistant cells after 72h treatment with RMC-4550 for MV-4-11 and MOLM-13. Data are shown as mean \pm SEM of three replicates from one experiment (N = 3). IC50 values were calculated using non-linear regression.

c-d) Survival assays of acquired resistant and washout cells after 72h treatment with SHP099. Data are shown as mean \pm SEM from three independent experiments (N = 3). IC50 was calculated using non-linear regression.