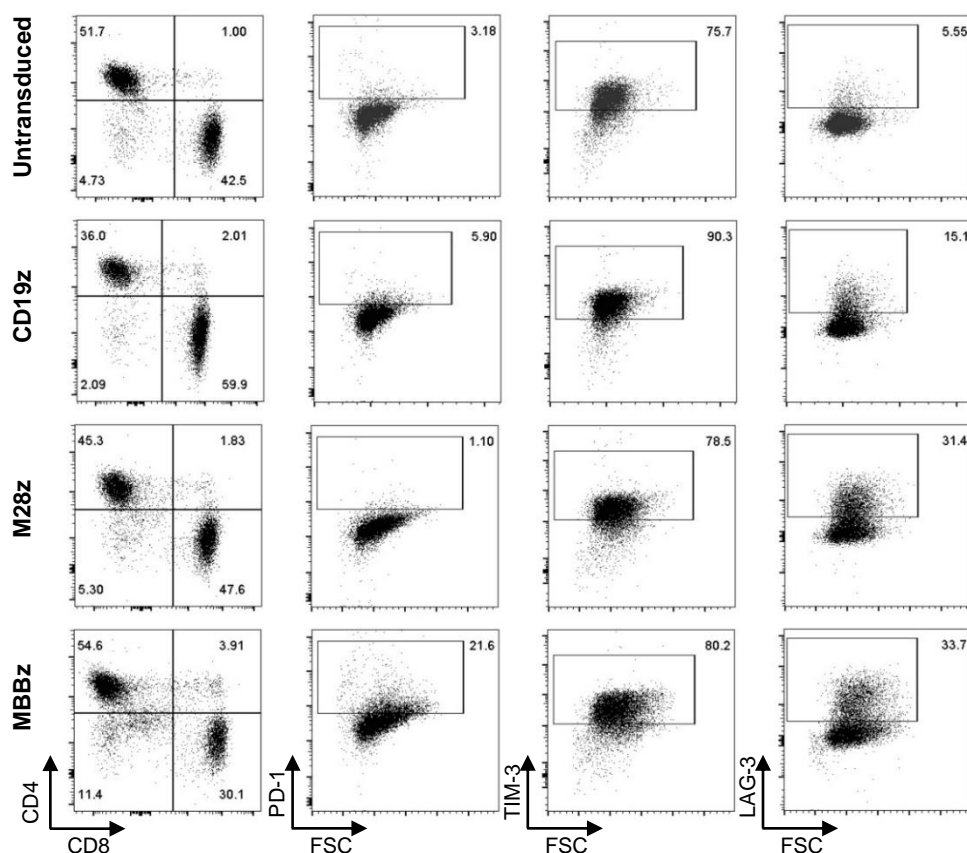
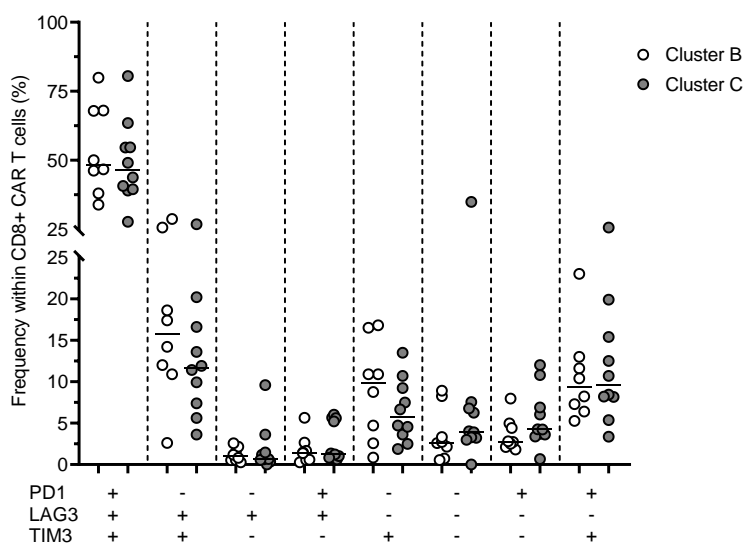
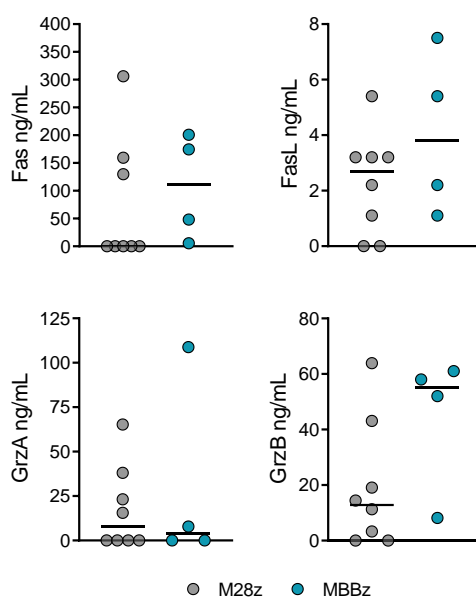
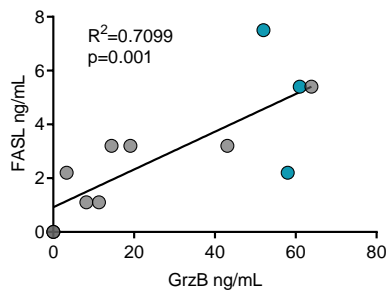


Fig S6**A****B****C****D**

Supplementary figure S6. Immune checkpoint receptors expression levels on CAR T cells and soluble factors secreted ex vivo by MSLN CAR T cells (SKOV-3 model). A. Representative flow cytometry analysis of CD4, CD8, PD-1, TIM-3 and LAG-3 expression on untransduced, CD19z, M28z and MBBz transduced T cells. **B.** Analysis of combinatorial checkpoint receptor expression by CD8+ CAR T cells in clusters B (n=8) and C (n=10) defined by hierarchical analysis of plasma soluble factors. **C.** Levels of soluble factors in supernatant following ex vivo assay of M28z (n=8) and MBBz (n=4) CAR T cells with MSLN+ SKOV-3 cells. **D.** Correlation between FasL and GrzB levels in the supernatant following the ex vivo assay. Linear regression was plotted and a R^2 value (steepness of curve) indicates correlation between cell population found within the tumor.