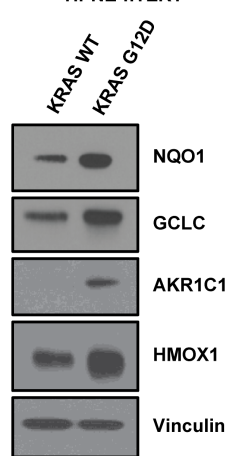


Supplementary Figure S1

A HPNE-hTERT



B

Jimeno Pancreas
NRF2 Over-expression in Pancreatic Cancer Xenograft:
KRAS Mutation
log2 Median-centered Intensity

Rank	P-value	Fold Change	Gene	Reporter	Gene
2665	0.034	2.22	NFE2L2	1567013_at	NFE2L2

Legend

- KRAS Wild Type (6)
- KRAS Mutation (28)

Jimeno Pancreas

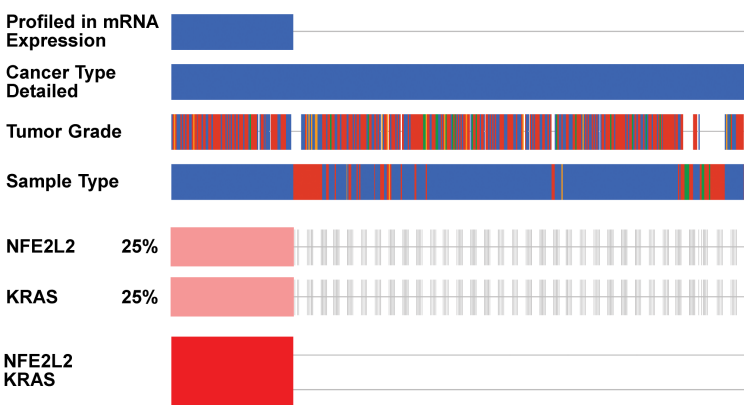
Clin Cancer Res 2008/04/15: 36 Samples
mRNA: 19,574 Measured Genes
Human Genome U133A Plus 2.0 Array

Least Expressed Most Expressed
■ Not Measured

Note: Colors are z-score normalized to depict relative values within rows. They cannot be used to compare values between rows.

C Pancreatic Adenocarcinoma (QCMG, Nature 2016) All Tumors (456 Samples)/2 Genes

Gene Set/Pathway Is Altered in 96 (21.1%) of Queried Samples



Cancer Type: ■ Pancreatic Adenocarcinoma

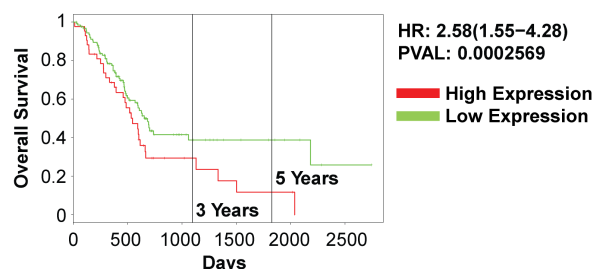
Tumor Grade: ■ 1. Well Differentiated ■ 2. Moderately Differentiated
■ 3. Poorly Differentiated ■ 4. Undifferentiated ■ 5. No Data

Sample Type: ■ Cell Line ■ Metastatic Tumor ■ Primary Tumor ■ Xenograft
■ -3 ■ 3 ■ No Data

Gene A	Gene B	Neither	A Not B	B Not A	Both	Ratio	P-Value	Log Odds P-Value	Adjusted Tendency
NFE2L2	KRAS	360	0	0	96	>3	<0.001	<0.001	Co-occurrence Significant

D

TCGA-PAAD
Survival Measure—Overall Survival
Combined Gene Expression—NFE2L2, KRAS
Cohort Divided at 75th Percentile of Gene Expression

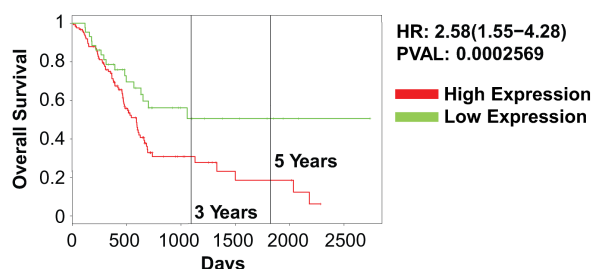


Harzard Ratio	LCI (95%)	UCI (95%)	P-Value
2.58	1.55	4.28	0.000256866669881672

Category	Samples	No. of Events	Median Survival	Low Conf. Int. (95%)	Up Conf. Int. (95%)
High	43	31	545	458	666
Low	127	58	652	568	NA

E

TCGA-PAAD
Survival Measure—Overall Survival
Combined Gene Expression—NFE2L2, KRAS
Cohort Divided at 25th Percentile of Gene Expression

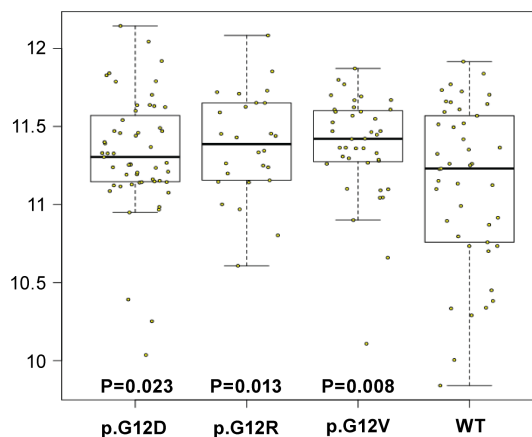


Harzard Ratio	LCI (95%)	UCI (95%)	P-Value
2.58	1.55	4.28	0.000256866669881672

Category	Samples	No. of Events	Median Survival	Low Conf. Int. (95%)	Up Conf. Int. (95%)
High	127	72	592	476	666
Low	43	17	NA	634	NA

F

NFE2L2 Expression by Allele for PAAD



G

Cell Line	KRAS Status
BxPC-3	WT
MIA PaCa-2	G12C
Capan-1	G12V
PANC-1	G12D
SU.86.86.	G12D
PK-1	G12D