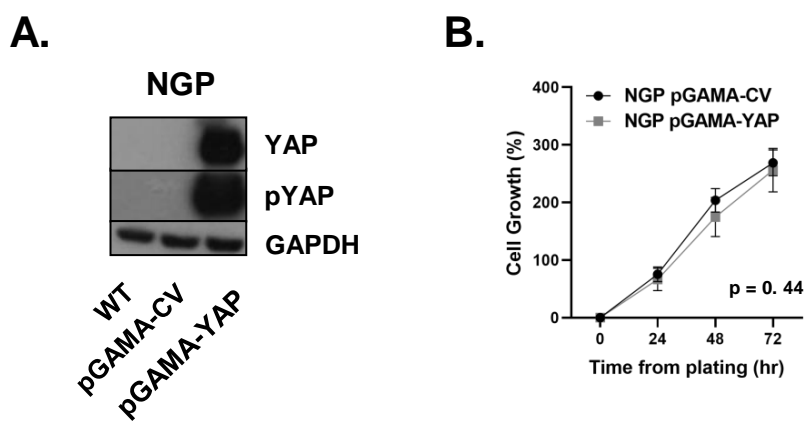
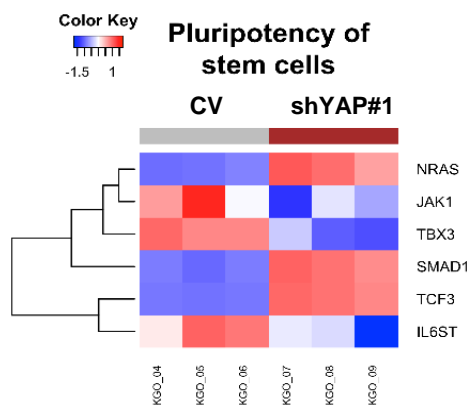


Supplementary Figure S1. Western blot of YAP protein expression in a paired isogenic cell line derived from the same patient at diagnosis (SK-N-Be1) and post-therapy recurrence (SK-N-Be2).



Supplementary Figure S2. **A,** Western blot NGP pGAMA-YAP model. **B,** Cell survival measured using CellTiter-Glo at hours 0, 24, 48, 72 after cells were plated. Data represent mean ± SEM (n=3).



Supplementary Figure S3. GSEA of stemness pathway genes. RNA seq of SK-N-AS CV and shYAP cells show that YAP regulates genes involved in stemness in neuroblastoma.