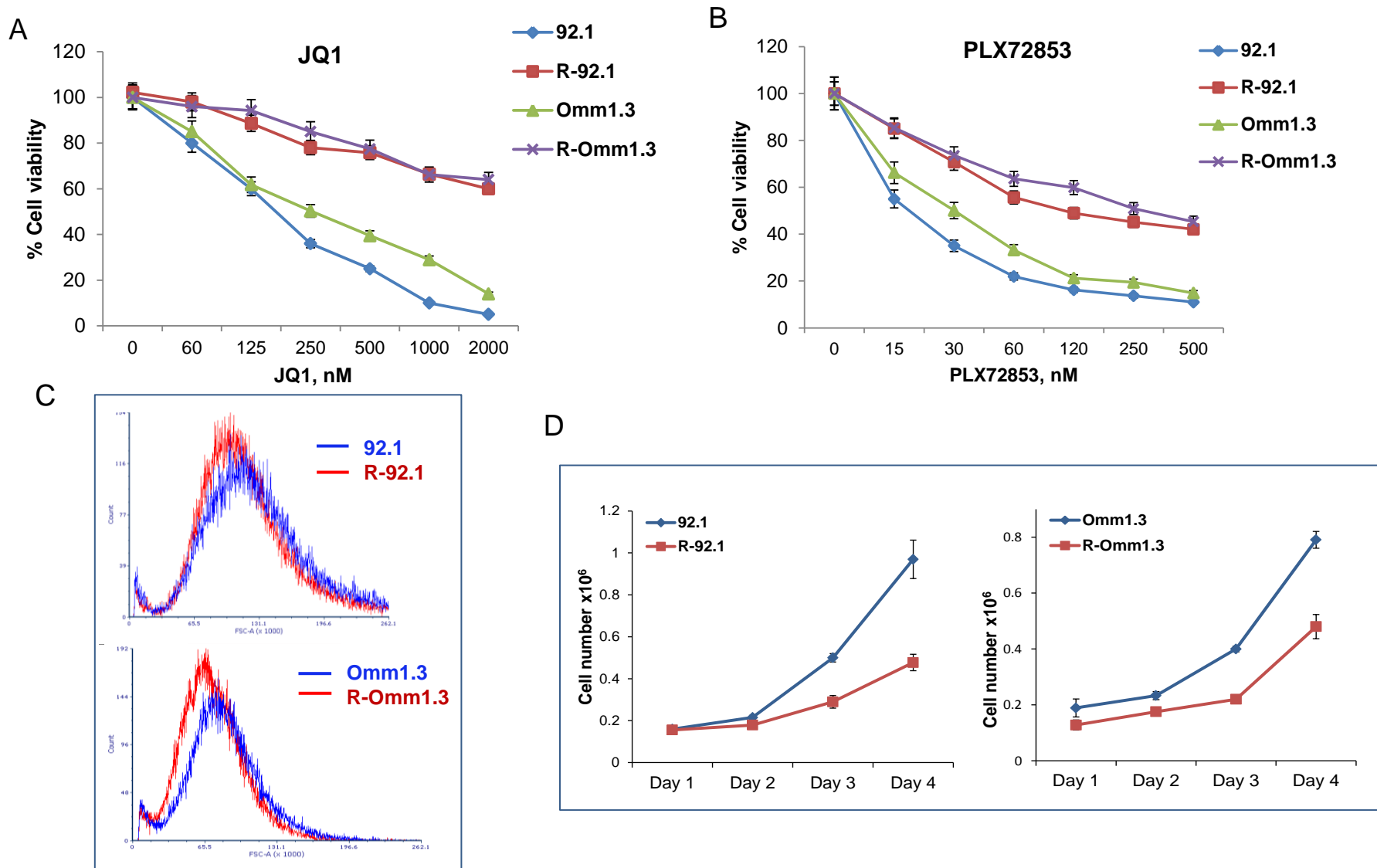


Supplementary Figure S4



Supplementary Figure S4. UM cells resistant to PLX51107 show cross-resistance to other BET inhibitors. Parental and resistant cells were treated with increasing doses of the BRD4 inhibitor JQ1 (**A**) or the pan-BET inhibitor PLX72853 (**B**), and tested in cell viability assays after 72hrs. Each point is a mean \pm sd. **C.** Parental and BETi-resistant 92.1 and Omm1.3 cells were analyzed for cell size by flow cytometry. **D.** The resistant cells showed slower rates of growth compared to the parental cells. Cell number was measured each day for four days. Each point is a mean \pm sd.