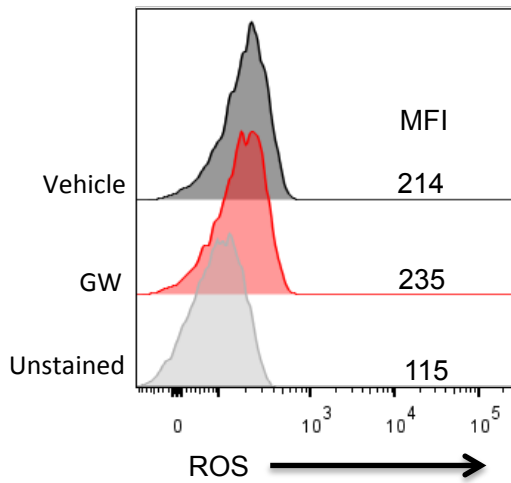


**C**



**Supplementary Figure 2: GW treatment decreases glycolytic proton efflux rate (glycoPER)**

**(A)** GlycoPER curve from the Glycolytic Rate Assay performed on CD8<sup>+</sup> P14 T cells stimulated for 72 hours with gp33 peptide-pulsed DCs in the presence of GW (red line) or vehicle (black line).

**(B)** Basal MitoOCR/ glycoPER and basal % PER from glycolysis from the experiment depicted in **(A)**.

**(C)** ROS measured in CD8<sup>+</sup> P14 T cells stimulated for 72 hours with gp33 peptide-pulsed DCs in the presence of GW or vehicle by staining with CellROX Deep Red Reagent (Invitrogen) as per the manufacturer's instructions and measured by flow cytometry.

**(A) – (C)** representative of at least two independent experiments.