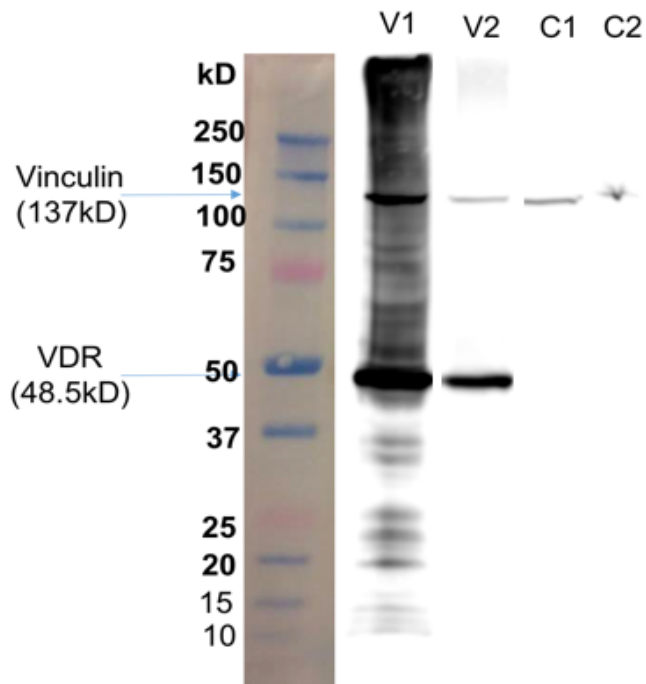


Supplementary Figure 3

A) Western blot for murine VDR (48.5kDa) expression in the two VDR-transfected clones (V1 and V2) compared to control clones C1 and C2. Vinculin (137kDa) is used as housekeeping control
B) qRT-PCR comparing expression of murine VDR in the two VDR-transfected clones (V1 and V2) compared to control clones C1 and C2 (Fold changes reported relative to clone C1).
house gene used: *GAPDH*

Supplementary Figure 3A



Supplementary Figure 3B

