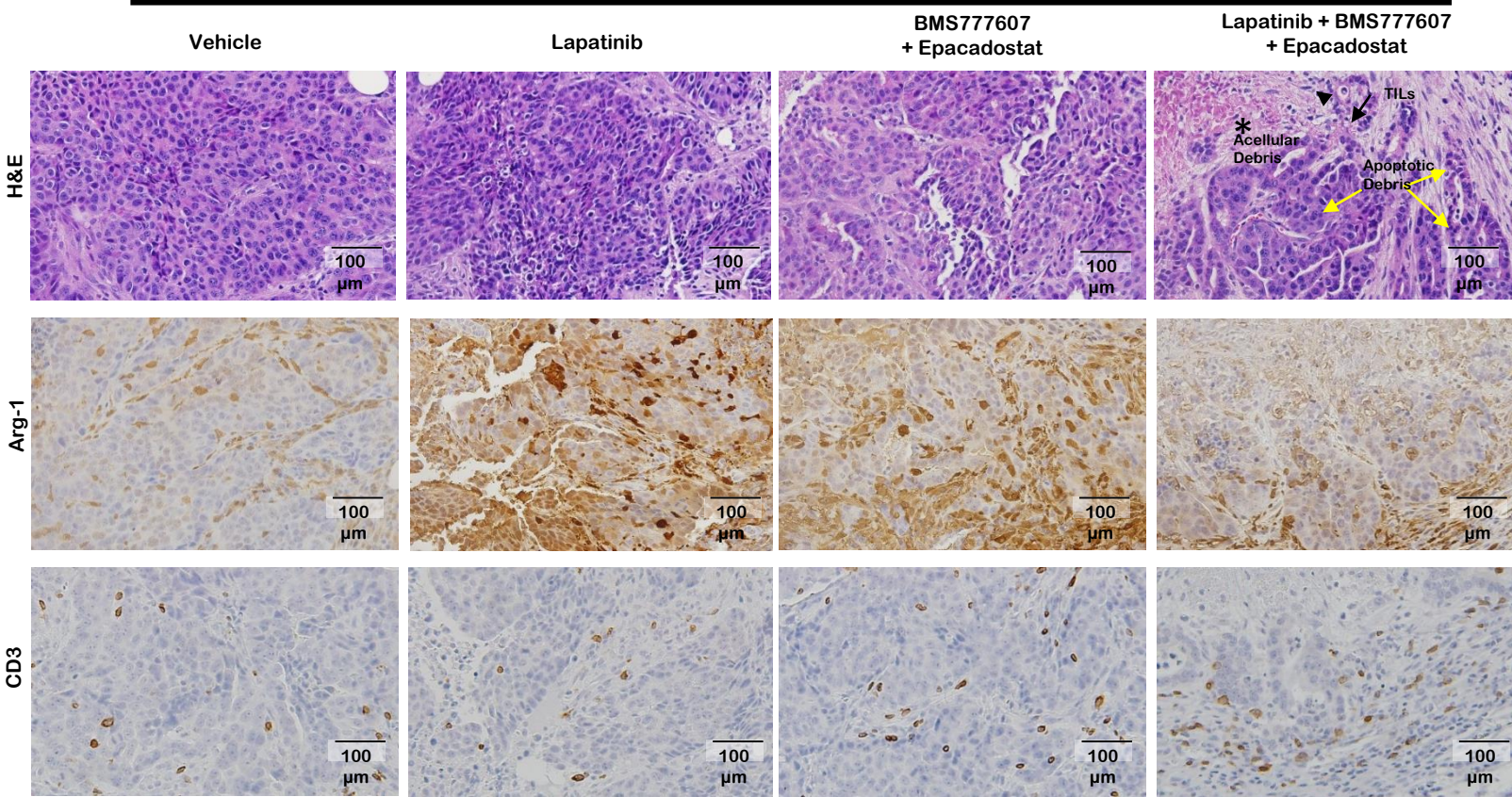


MMTV-Neu tumors, treatment day 7



Supplemental Figure S6. Tumors harvested on treatment d 7 were assessed by IHC for FoxP3 and Arg-1. Representative images are shown. Original magnification = 400X. Asterisks represent areas of acellular debris. Black arrows indicate tumor infiltrating lymphocytes (TILs). Yellow arrows indicate hyper-condensed nuclei characteristic of apoptotic bodies / apoptotic debris.