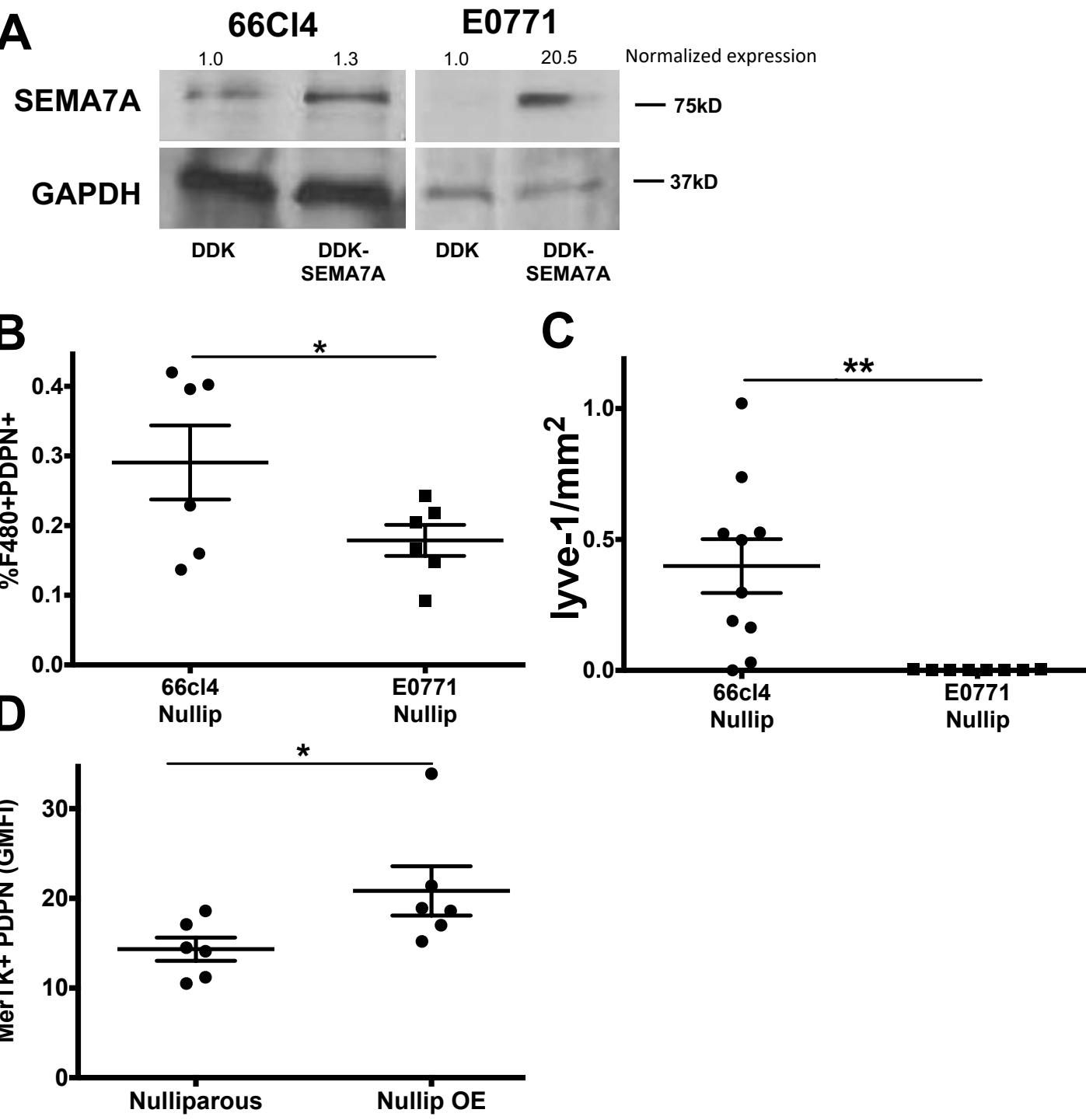


# Supplemental Figure 3



**SFigure 3:** A) 66cl4 and E0771-SEMA7A-DDK and 66cl4-DDK control cell expression of SEMA7A via immunoblot analysis and densitometry. B) Frequency of F4/80+PDPN+ and C) lymph vessel density in 66cl4-DDK cells that express detectable endogenous SEMA7A compared to E0771-DDK that do not. D) Lymph vessel density and GMFI PDPN in F4/80+MerTK+ in E0771 tumors in nulliparous animals with overexpression of SEMA7A. Unpaired t-tests: \* $p < 0.05$ , \*\* $p < 0.01$ .