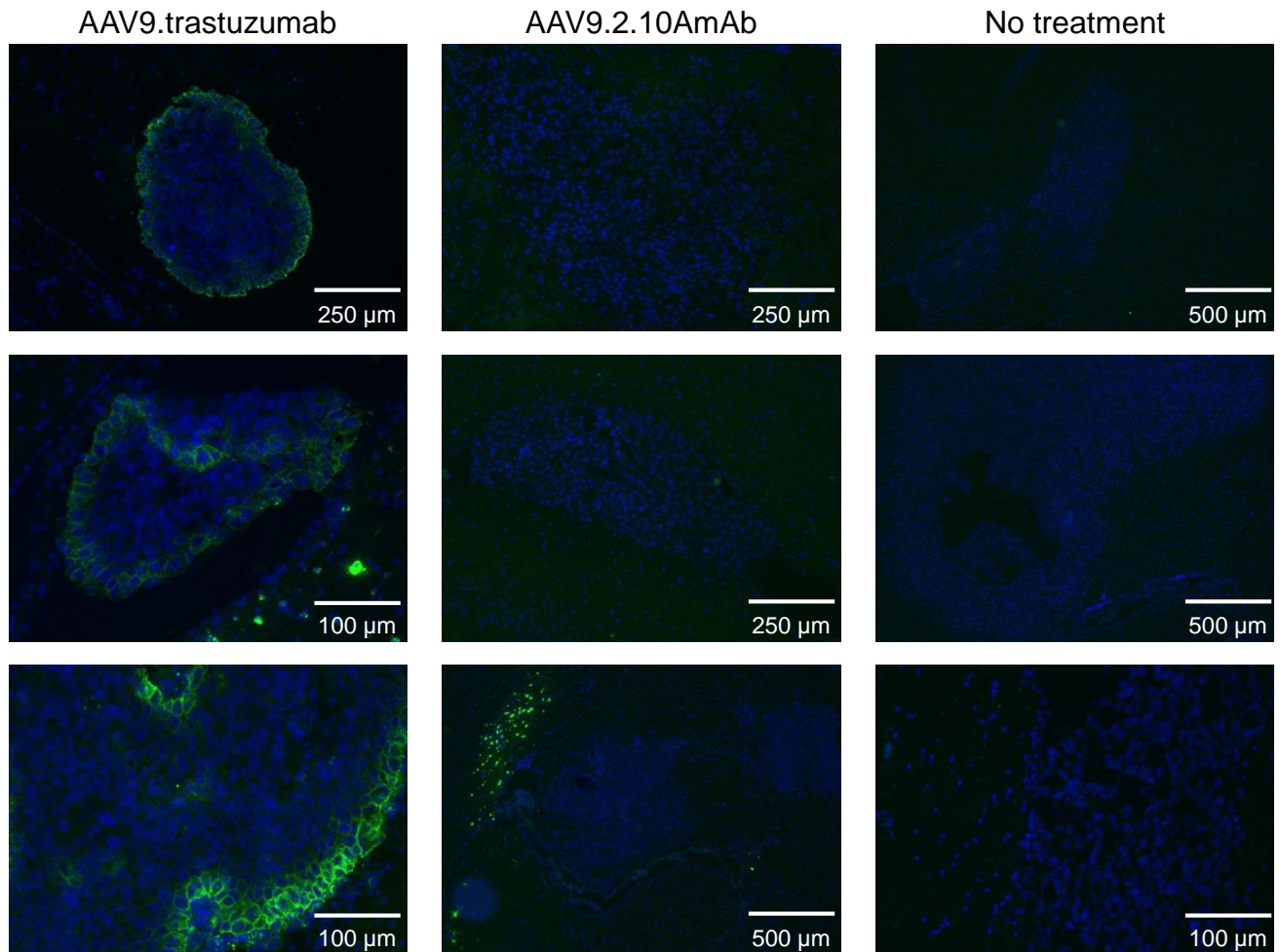


Supplemental Figure 4. Anti-IgG immunofluorescence of day 47 tumor cryosections. Component channels and channel merge for images in Figure 3.



Supplemental Figure 5. Anti-IgG immunofluorescence of day 20 tumor cryosections. Green channel (human/rhesus IgG) immunofluorescence staining of day 20 tumor cryosections from mice that received AAV9.trastuzumab tumor prophylaxis, AAV9.2.10AmAb, or no treatment at least 21 days before tumor administration.