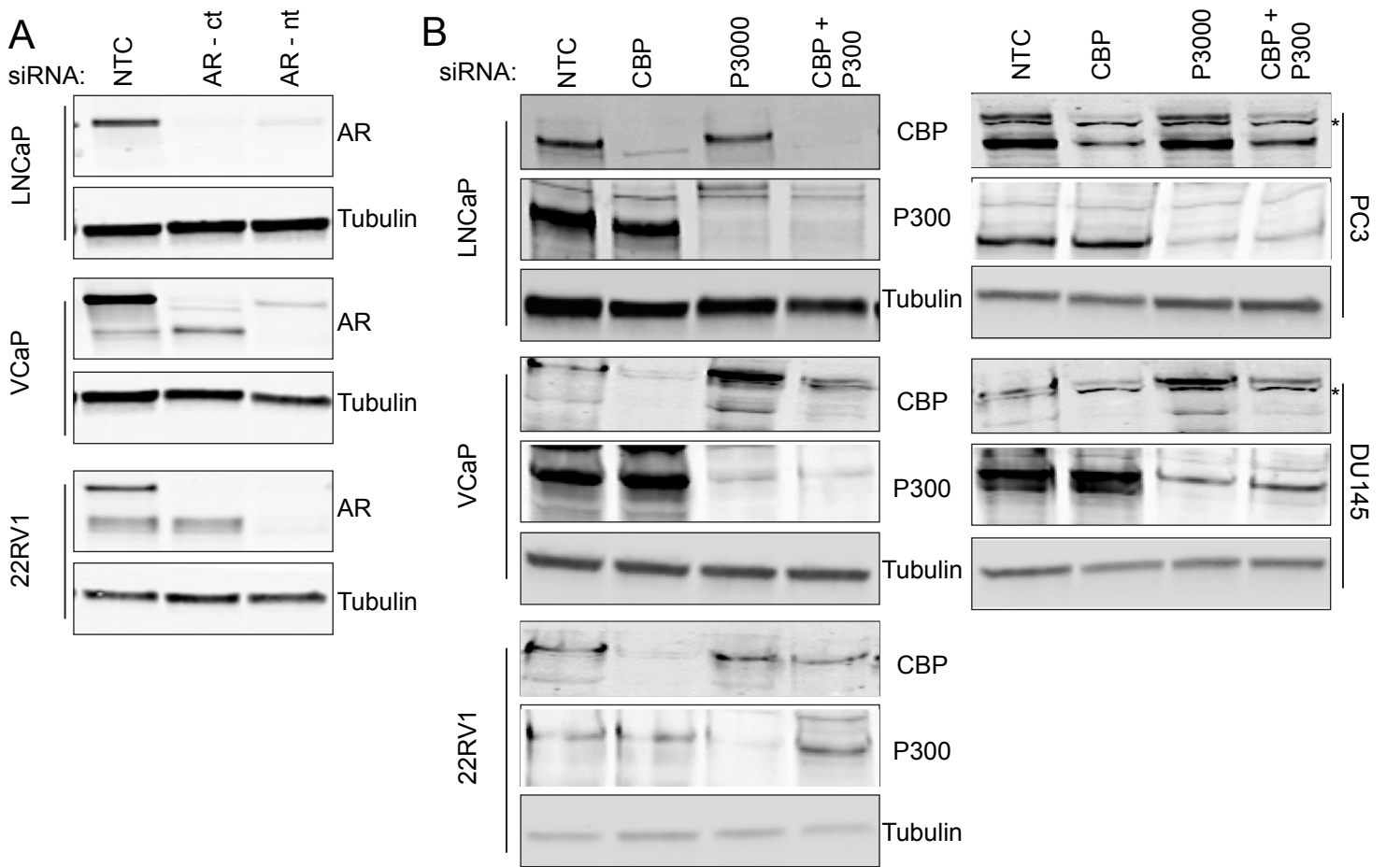
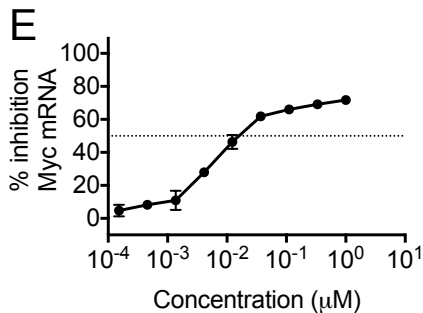
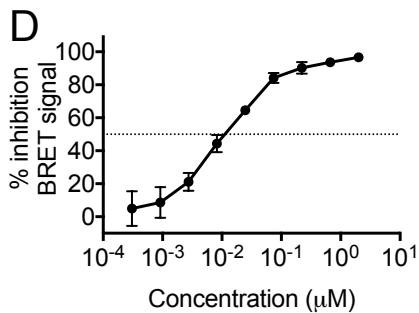


Supplementary Figure 1: AR expressing prostate cancer cell lines are sensitive to CBP/P300 bromodomain inhibition.



C

Isolated Bromodomain	Mean IC50 (μM) N=2
CREBBP	0.0011
EP300	0.0023
BAZ2B	>20
BPTF	>20
BRD4(1)	4.2
BRD4(2)	>20
BRD8(1)	>20
BRD9	>20
BRPF1	>20
CECR2	>20
GCN5L	>20
PCAF	>20
TAF1(1)	>20
TAF1(2)	>20



F

Parameter	Result (Average \pm SD)
AUC_{last} ($\text{h} \cdot \mu\text{M}$)	110 ± 4
C_{max} (μM)	24.0 ± 5
T_{max} (h)	1.0 ± 0
$T_{1/2}$ (h)	2.98 ± 0.8

Oral 30 mg/kg n=3