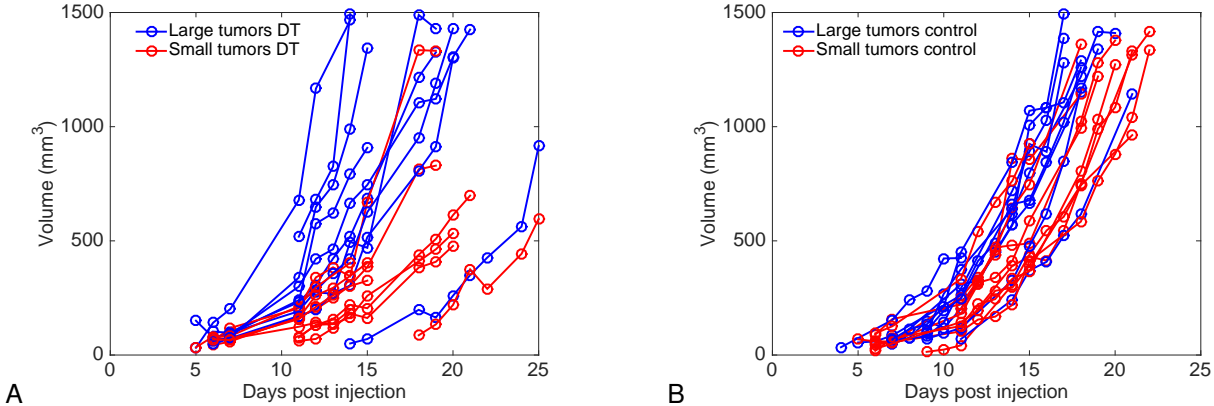


Supplementary Figures

Supplementary figure 1: plot of all tumor volumes for double and single (control) tumor groups

Supplementary figure 1: plot of all tumor volumes for double and single (control) tumor groups



Growth curves were plotted and distinguished between large and small tumors for the double (A) and single (control) (B) groups. In the second case, artificial pairings were considered between tumors of the control group to determine large and small tumors that would have occurred by randomness only (i.e. under independent growth conditions). DT = double tumors group