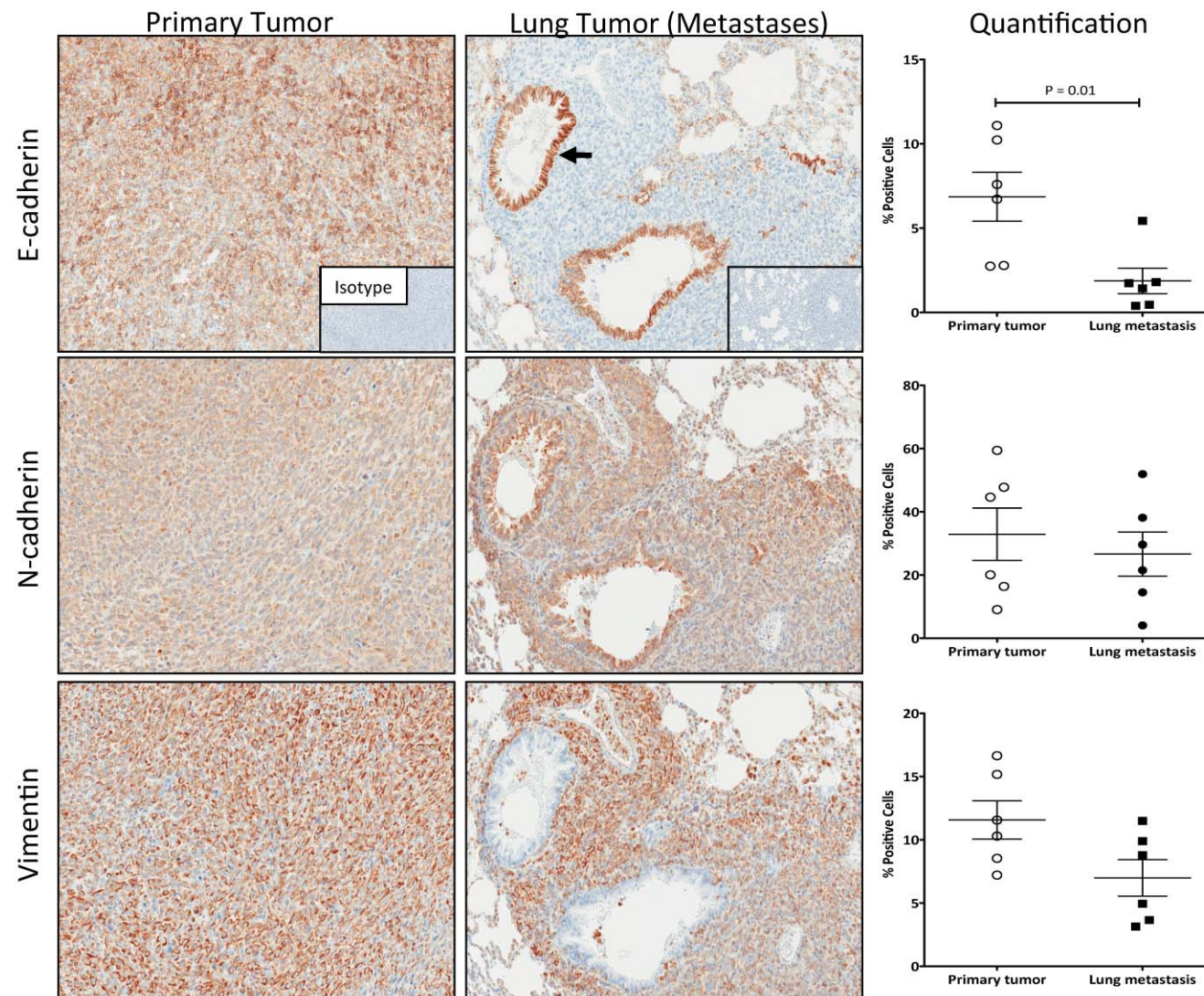


Supplemental Figure 2



Supplemental Figure 2. Expression of EMT marker expression in primary tumor and lung metastases. Female Balb/C mice (n=6) were injected with 5×10^4 4T1 cells in mammary fat pad. On day 30, primary tumors and lung metastases were harvested. Expression of epithelial marker E-cadherin and mesenchymal markers N-cadherin and vimentin on 4T1 primary tumors and lung metastases was detected by immunohistochemistry (magnification 20X) and quantified by positive pixel quantification analysis. Statistical analyses were done by Student's *t*-test. Arrow: E-cadherin staining of normal airway bronchial epithelia.