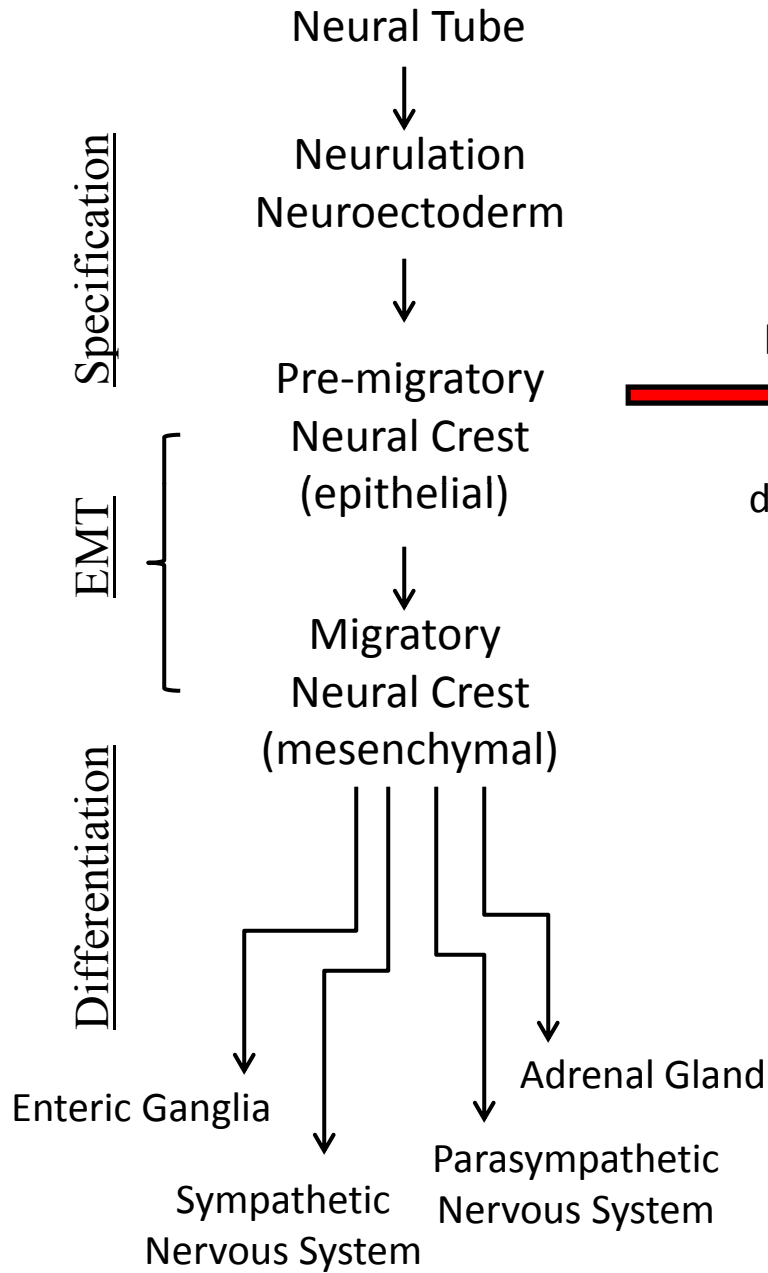
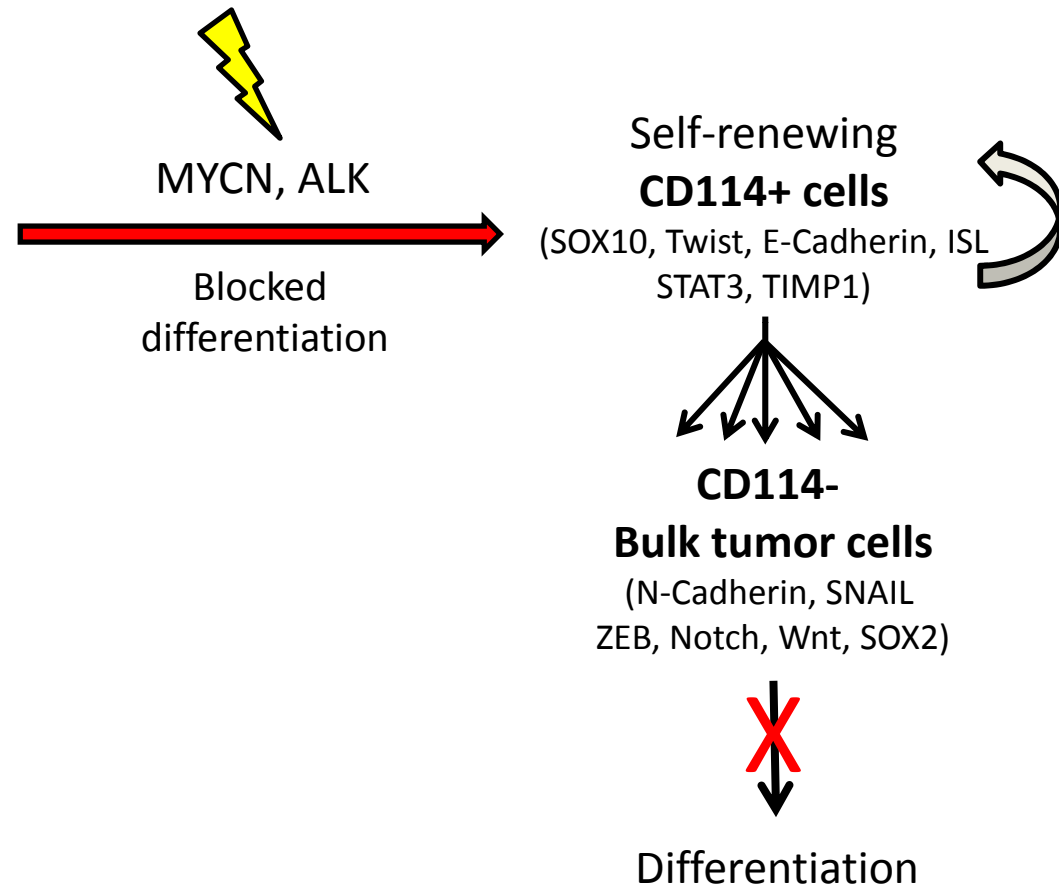


## Neural Crest Development



## Neuroblastoma



Supplementary Figure S3. Model for CD114+ and CD114- cells in neural crest development. The CD114+ neuroblastoma subpopulation may arise due to an oncogene driven block in differentiation of the neuroepithelial derived pre-migratory neural crest. (MYCN = N-Myc oncogene, ALK = anaplastic lymphoma kinase, EMT = epithelial to mesenchymal transition).