

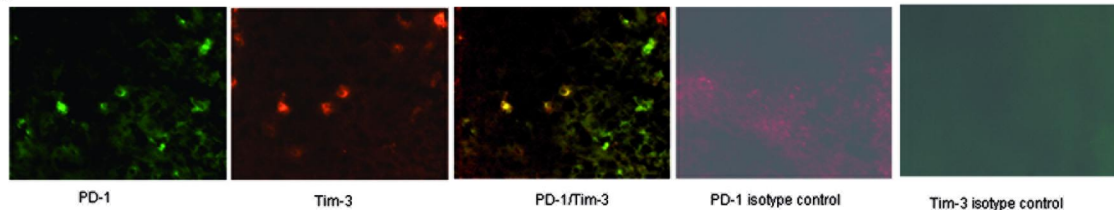
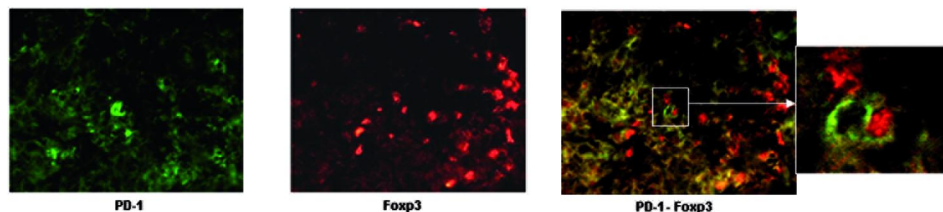
A**B**

Fig S5: Some PD-1 positive cells colocalize with Tim-3 but not with Foxp3-positive cells.

A: Head and neck cancer biopsies were stained with anti-PD-1, anti-Tim-3 or isotype control antibodies. Representative experiments of simple and double immunofluorescence analysis are shown.

B Tissues from head and neck cancers were stained with PD-1 and Foxp3 mAb. Right and middle image show simple immunofluorescence analysis. Left: double immunofluorescence analysis of PD-1- and Foxp3-positive cells (magnification $\times 400$). A high magnification view ($\times 650$) of adjacent Foxp3⁺ and PD-1⁺ cells is also depicted in the inset.