

Figure S1. Typical example of gating of MDSC populations in spleens of naïve tumor-free, EL-4, or MC38 tumor-bearing C57BL/6 mice

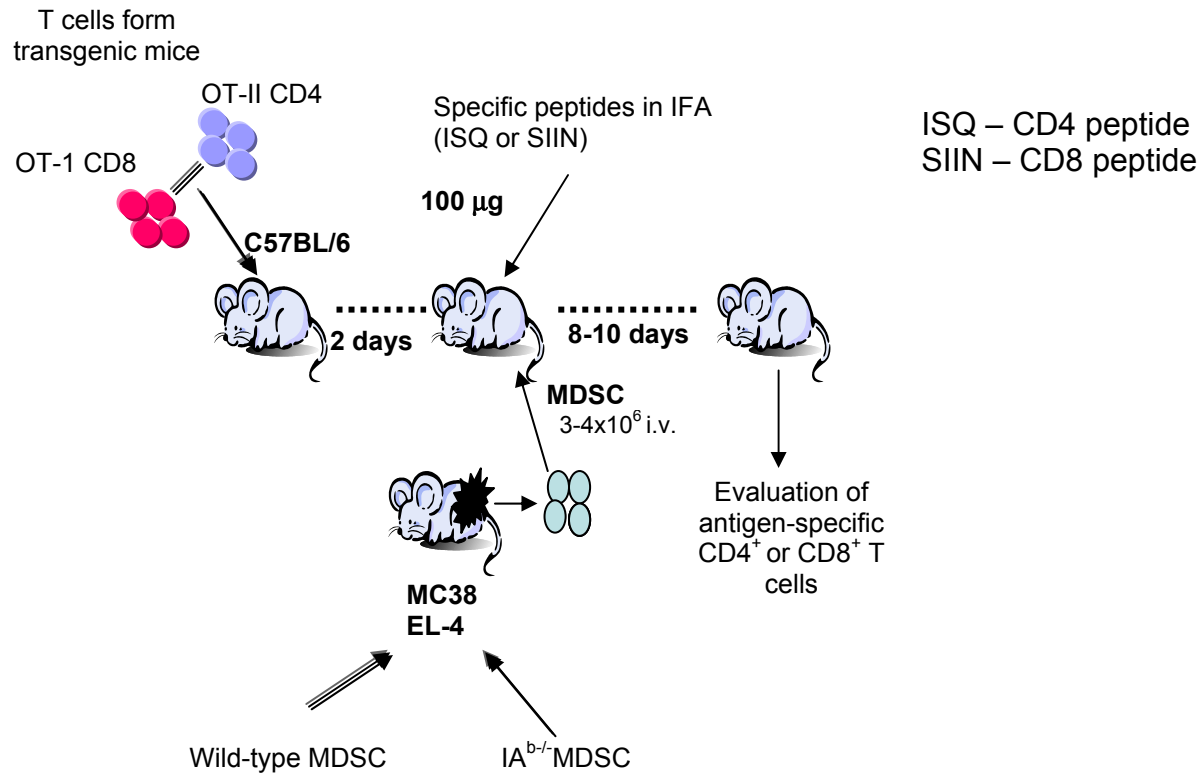


Figure S2. Schema of the experiments to study MDSC mediated T-cell tolerance

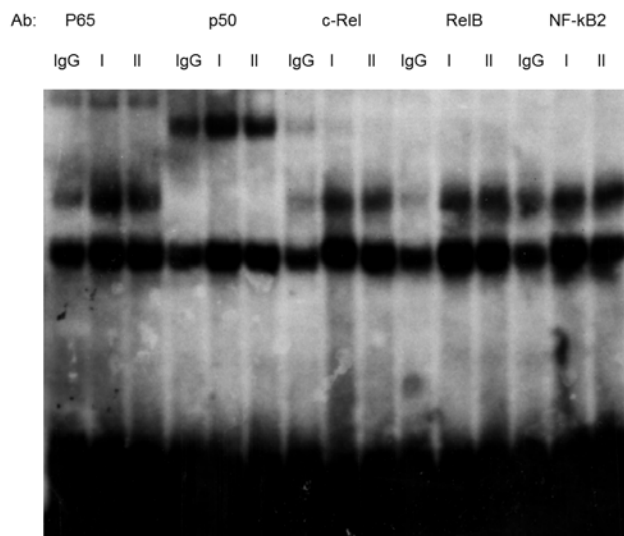


Figure S3. Effect of MHC class I and class II cross-linking on activation of NF- κ B.

MDSC were isolated from spleens of MC38 tumor-bearing mice and incubated for 16 hr with immobilized IgG, MHC class I H2K^b (I), or MHC class II IA^b (II) specific antibodies. NF- κ B activity was measured using EMSA as described previously (1, 2). EMSA shift assay using indicated antibodies against NF- κ B subunits.

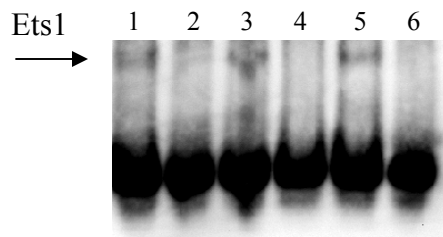


Figure S4. Ets1 activation by crosslinking of IA^b. MDSC were isolated from spleens of MC38 tumor-bearing mice and cultured for 12 hr with immobilized control IgG (1,2), H2K^b (3,4) or I-A^b (5,6) antibodies. Nuclear extracts were prepared and incubated with labeled Ets1- specific probe. Lines 2, 4, and 6 – 2x excess of unlabeled probe was added.

References

1. Cheng, P., Zlobin, A., Volgina, V., Gottipati, S., Osborne, B., Miele, L., & Gabrilovich, D. I. (2001) *J. Immunol.* 167, 4458-4467.
2. Nefedova, Y., Cheng, P., Gilkes, D., Blaskovich, M., Beg, A. A., Sefti, S. M., & Gabrilovich, D. I. (2005) *J Immunol* 175, 4338-4346.