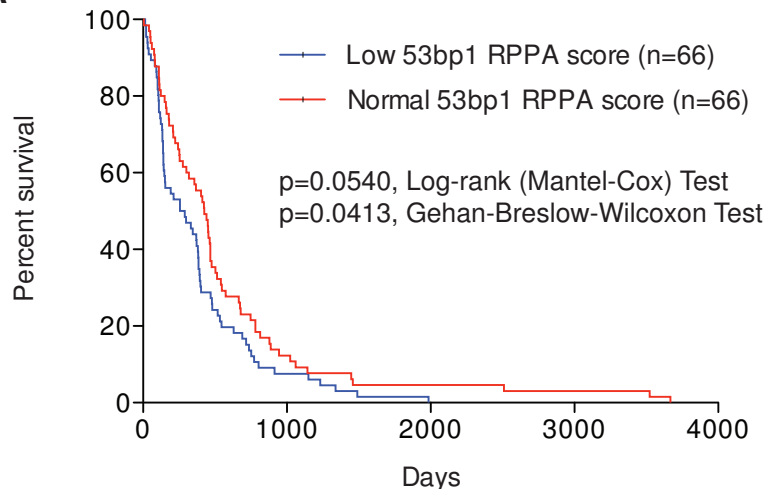
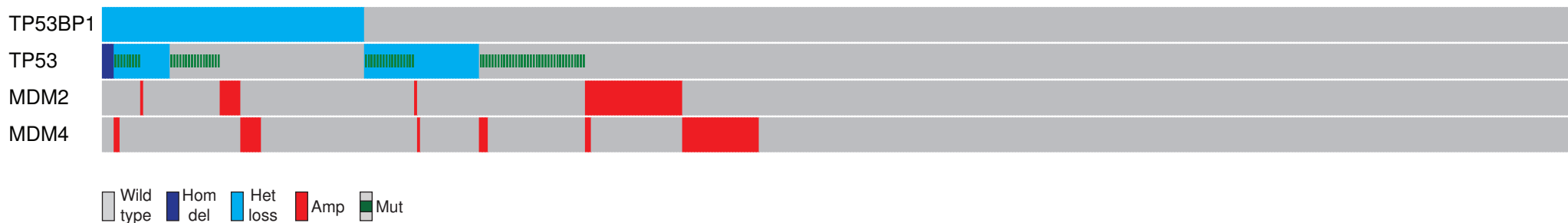


A



B



C

i) Classical

	TP53BP1 del	TP53BP1 wt	%
TP53 alt.	1	3	7.4
TP53 wt	3	47	92.6
%	7.4	92.6	

ii) Mesenchymal

	TP53BP1 del	TP53BP1 wt	%
TP53 alt.	3	14	32.7
TP53 wt	3	32	67.3
%	11.5	88.5	

iii) Neural

	TP53BP1 del	TP53BP1 wt	%
TP53 alt.	1	7	27.6
TP53 wt	0	21	72.4
%	3.4	96.6	

iv) Proneural

	TP53BP1 del	TP53BP1 wt	%
TP53 alt.	13	10	41.1
TP53 wt	9	24	58.9
%	39.3	60.7	

### Figure S1, related to Figure 1. 53BP1 loss in human GBM

(A) Kaplan-Meier survival curve of GBM patients (n=132) with low (bottom 50%) and normal/high (top 50%) 53BP1 RPPA score. (B) Gene-dosage profiles for TP53BP1, TP53, MDM2 and MDM4 across 501 GBMs in TCGA dataset. Each row represents a patient: gray, wild type; dark blue, homozygous deletions; light blue, heterozygous deletions; red, amplifications; green, mutations. (C) Two way contingency table indicating co-occurrence of TP53BP1 copy loss with TP53 alterations in the TCGA dataset (n=191), separated accordingly to the four molecular subtypes of glioblastoma (Classical, Mesenchymal, Neural, and Proneural).