

S. Fig 5: Engraftment of CD19⁺CD5⁺ CLL cells in peritoneal cavity

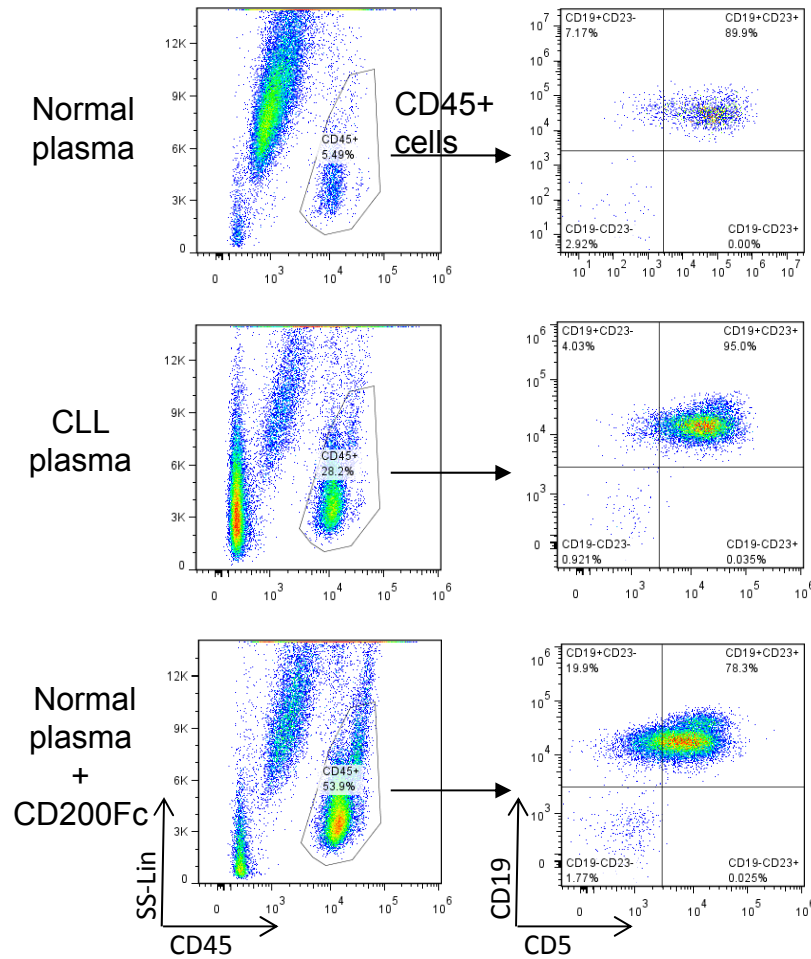


Figure legend:

CD19⁺CD5⁺ CLL cells within the CD45⁺ population in the peritoneal cavity of mice that received one of three plasma infusions: sCD200^{lo} normal plasma (upper panel), sCD200^{hi} CLL plasma (middle panel), or sCD200^{lo} normal plasma + CD200Fc (lower panel). Representative data from individual animals from each group are shown.