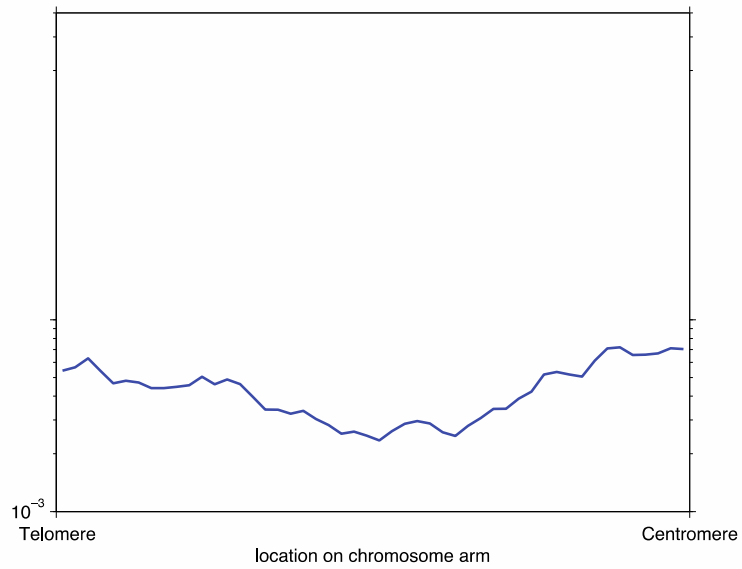


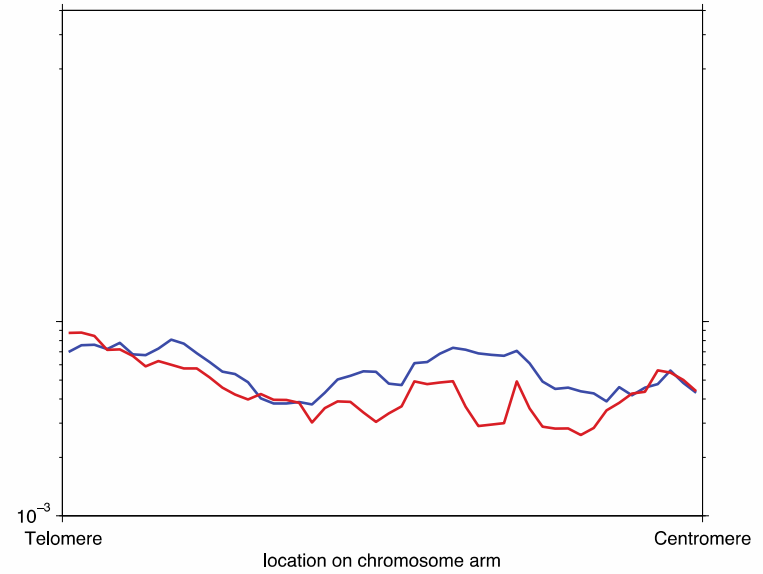
Figure S1

Amplifications



6  
4  
1  
1

Deletions



3  
)  
7  
;

Colorectal	—	Gastric	—	Esophageal	—	Composite	...
Colorectal	- -	Gastric	- -	Esophageal	- -	Composite	- -
Significance		Significance		Significance		Significance	

Figure S2-A

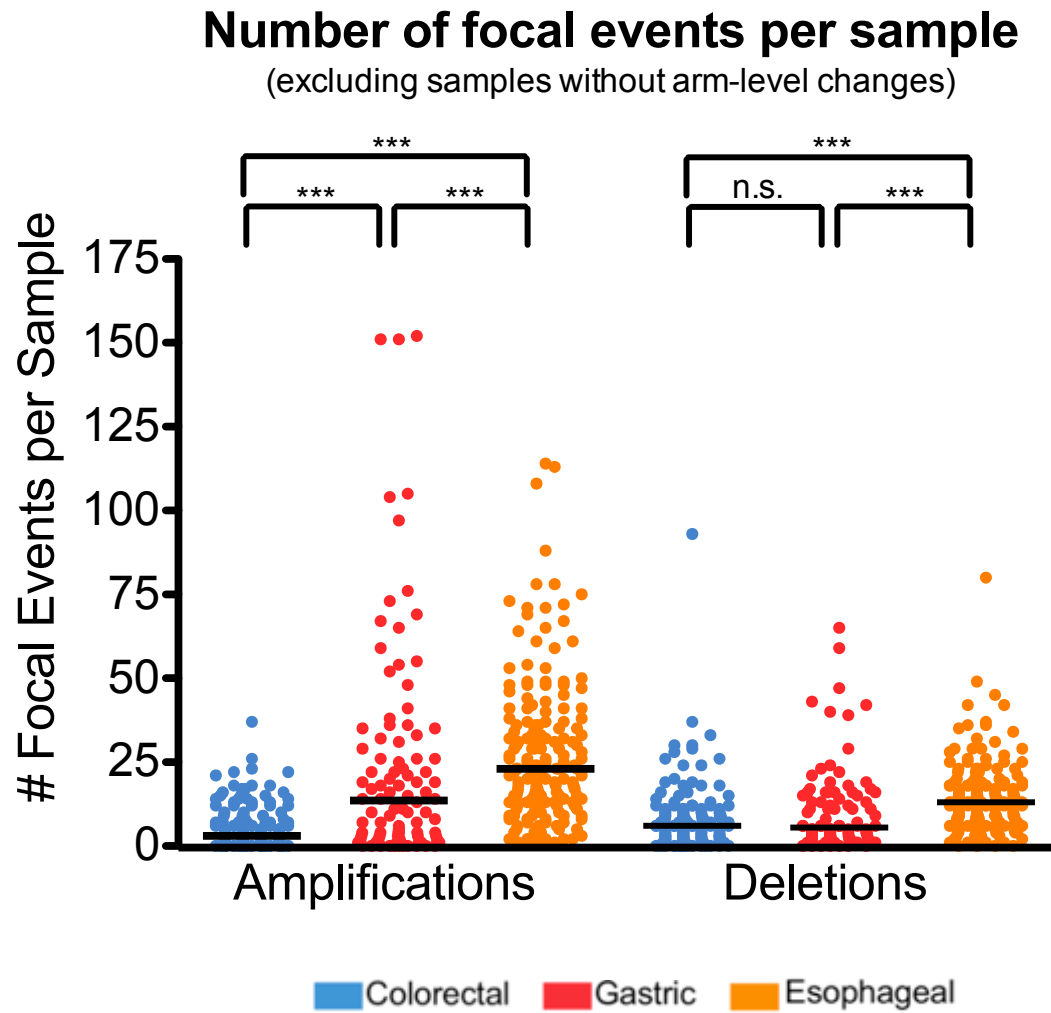


Figure S2-B

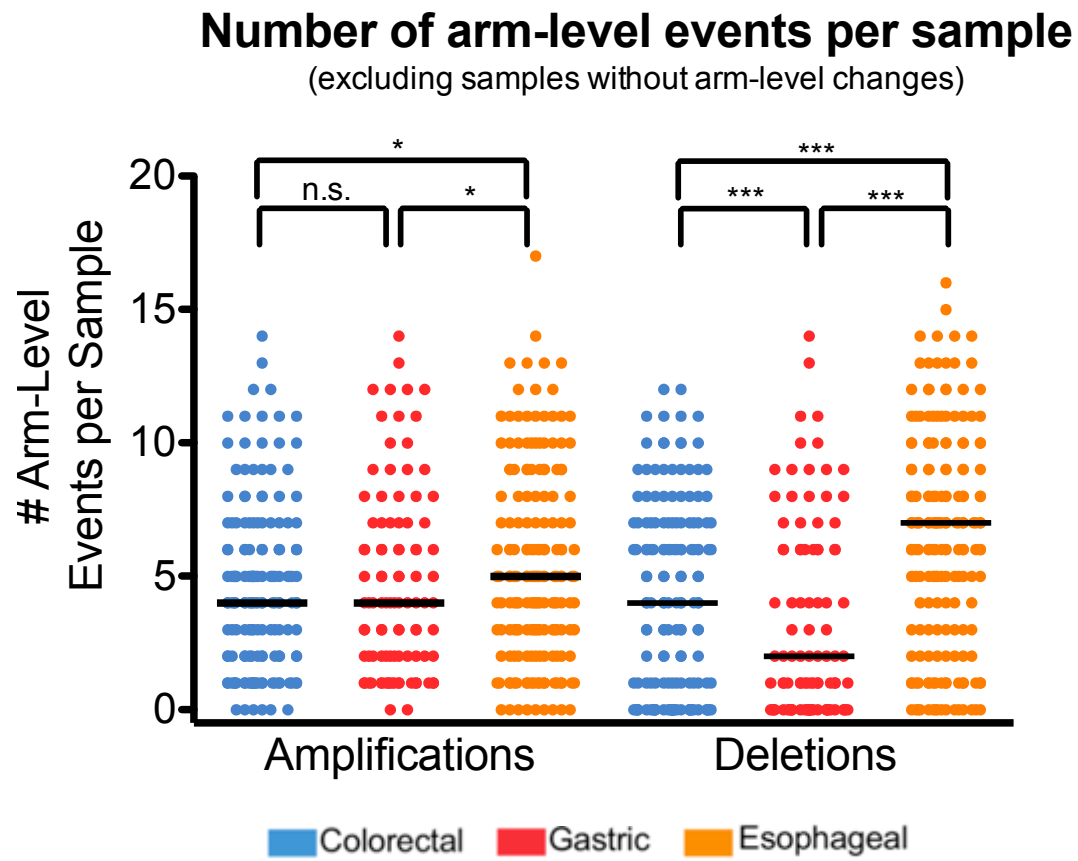


Figure S3

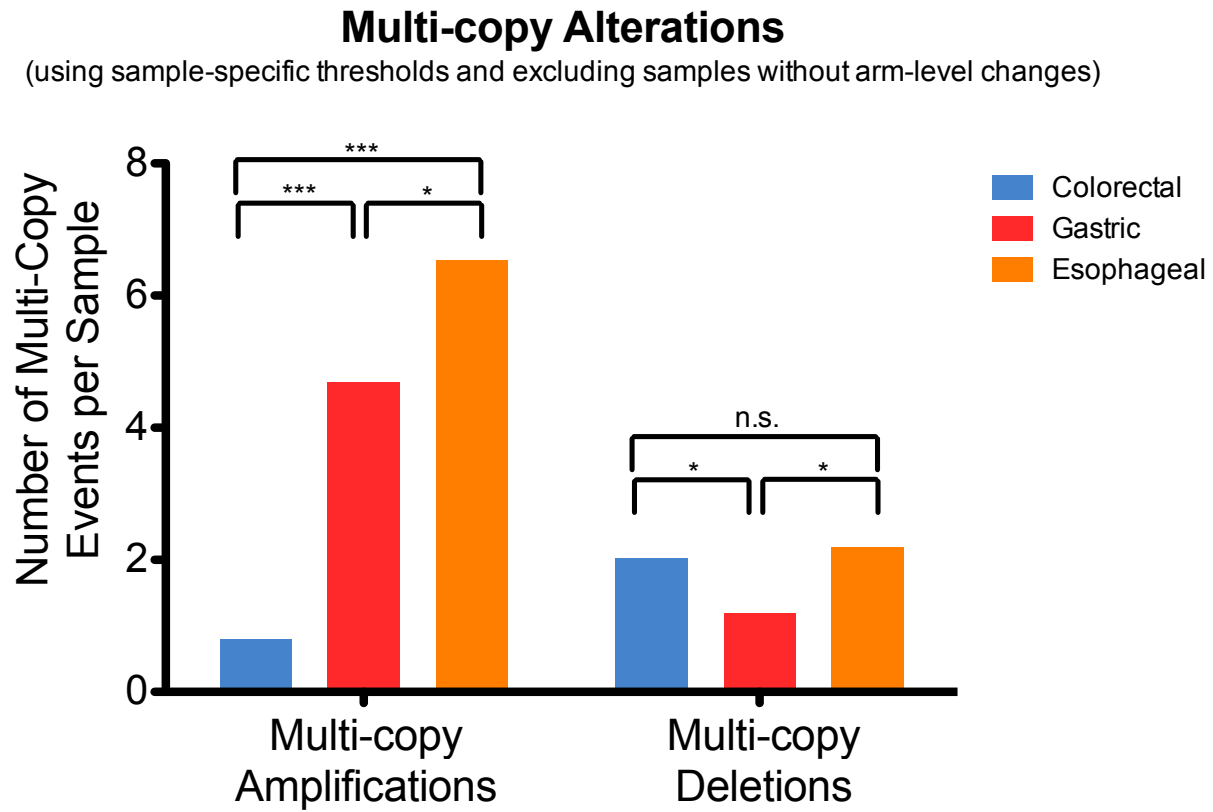


Figure S4-A

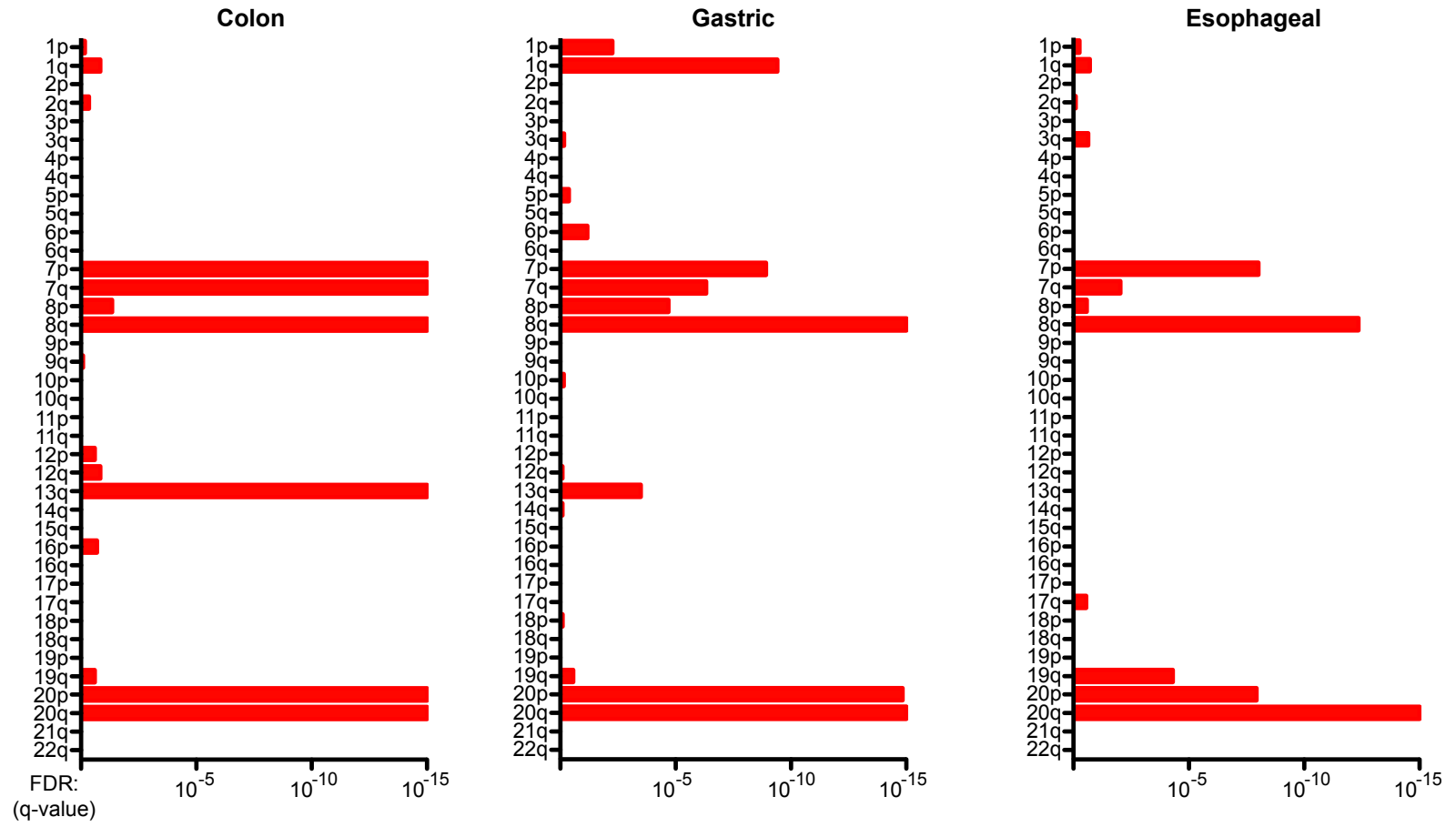


Figure S4-B

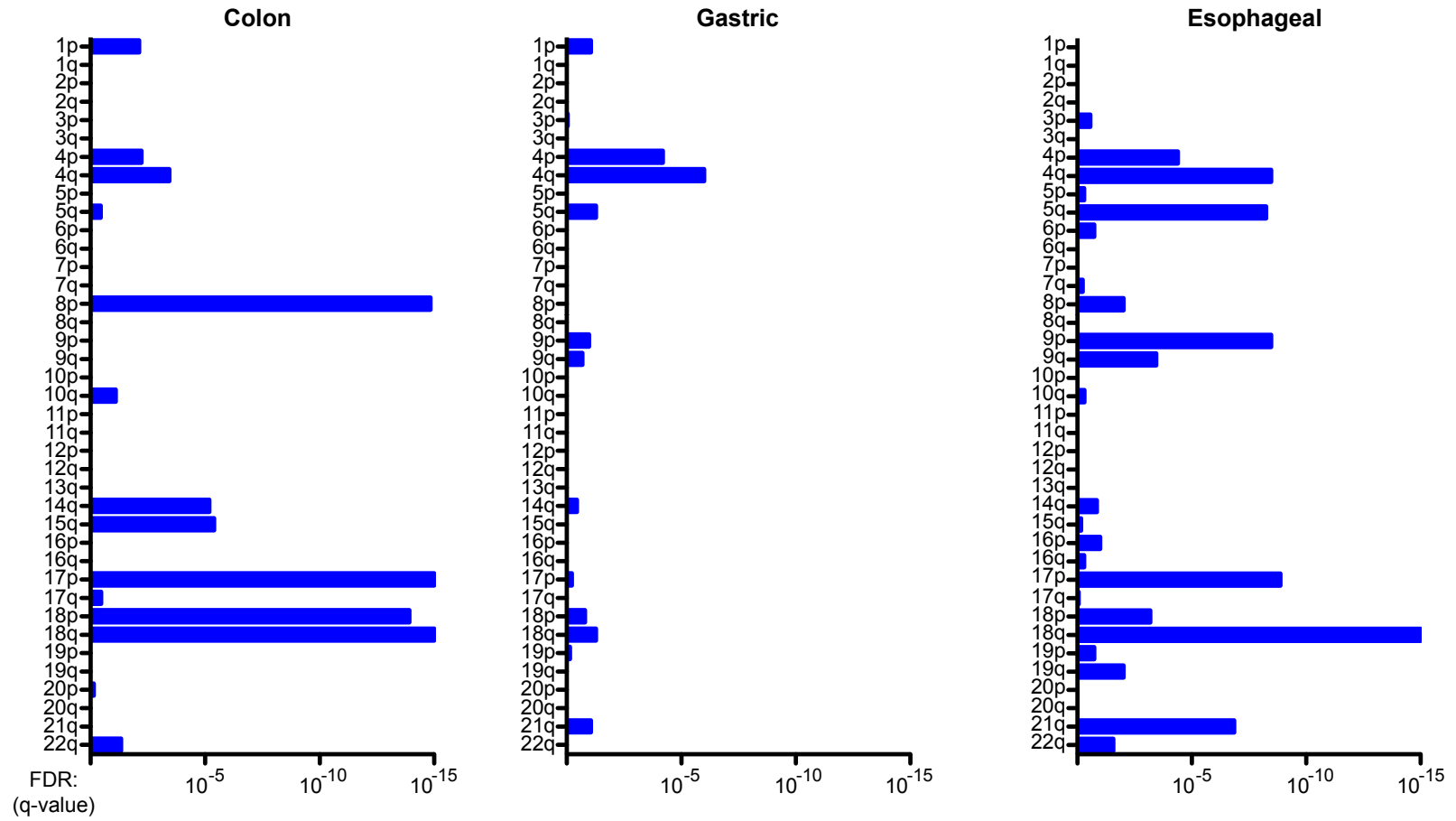
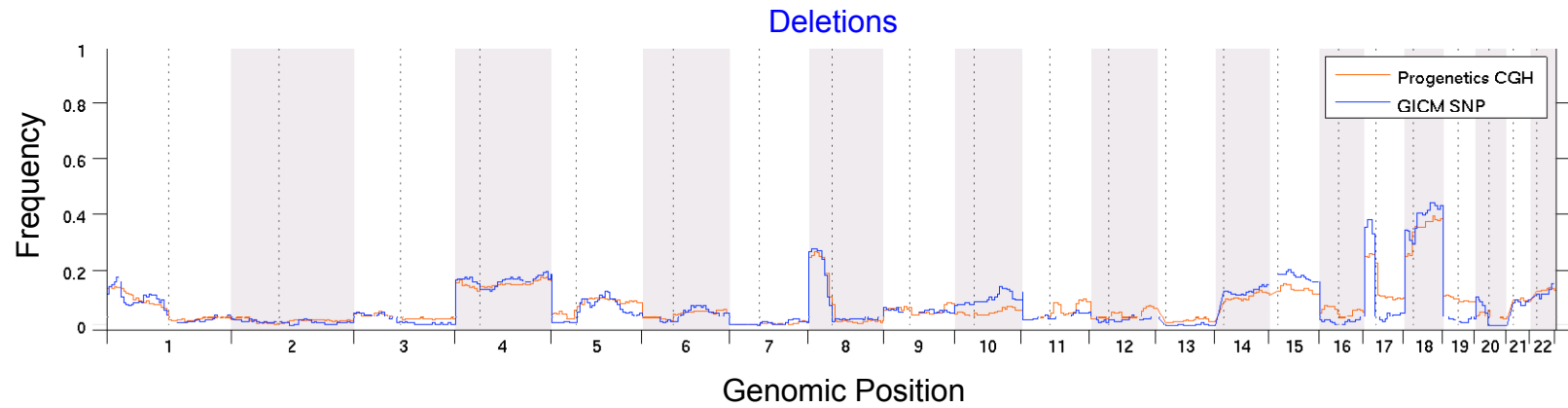
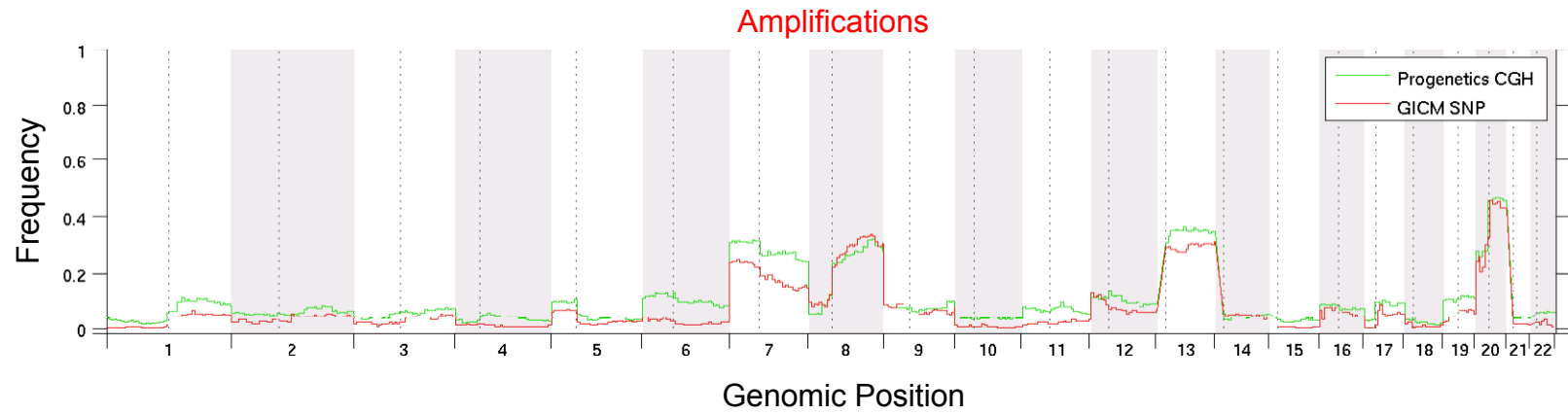


Figure S5-A

## Colorectal Carcinoma

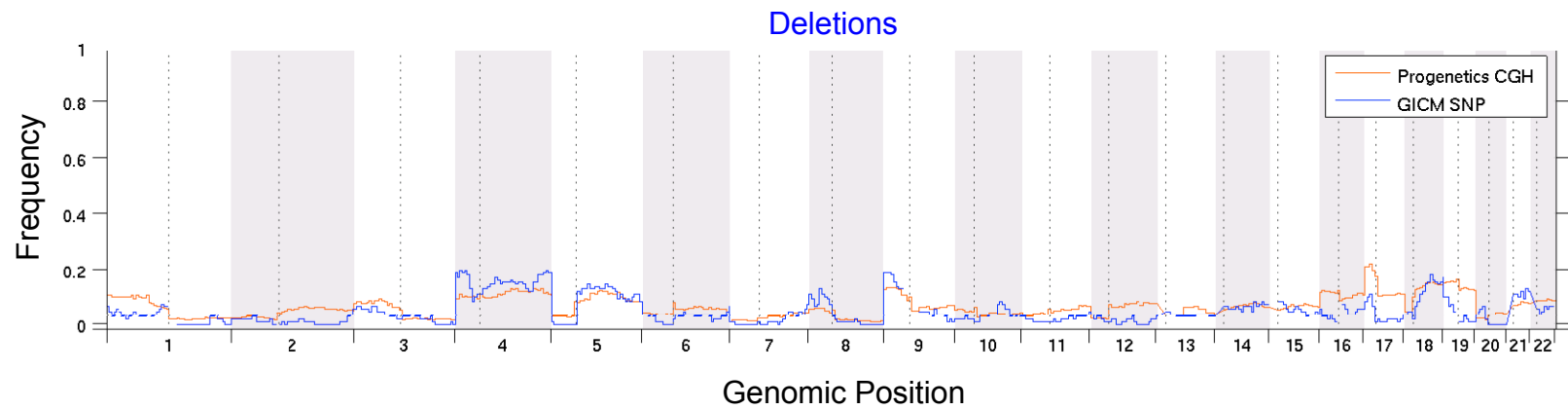
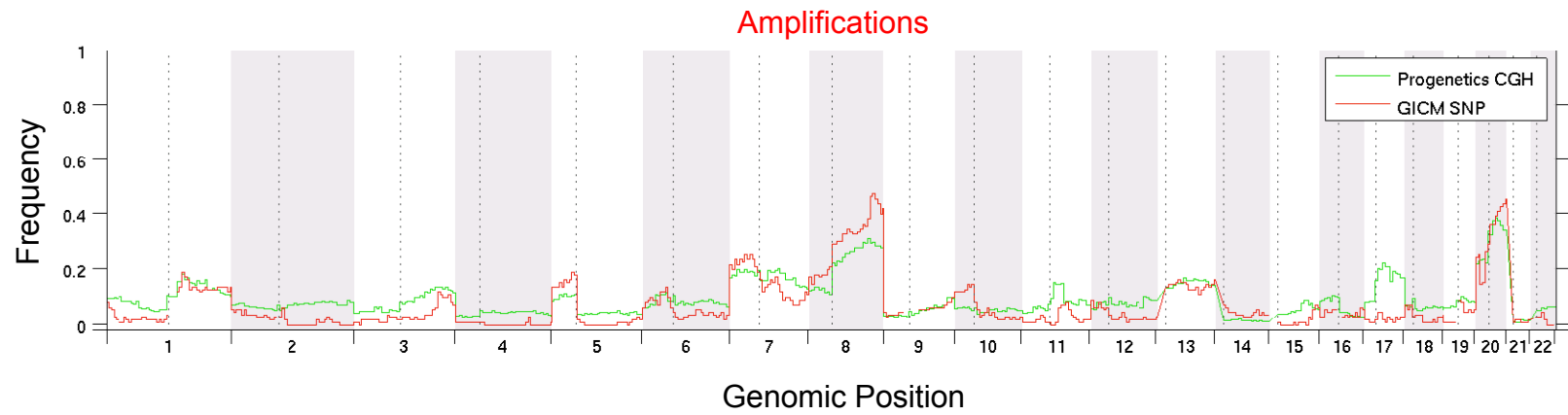


Number of Tumors

GICM n=190  
Progenetix n=998

Figure S5-B

## Gastric Adenocarcinoma



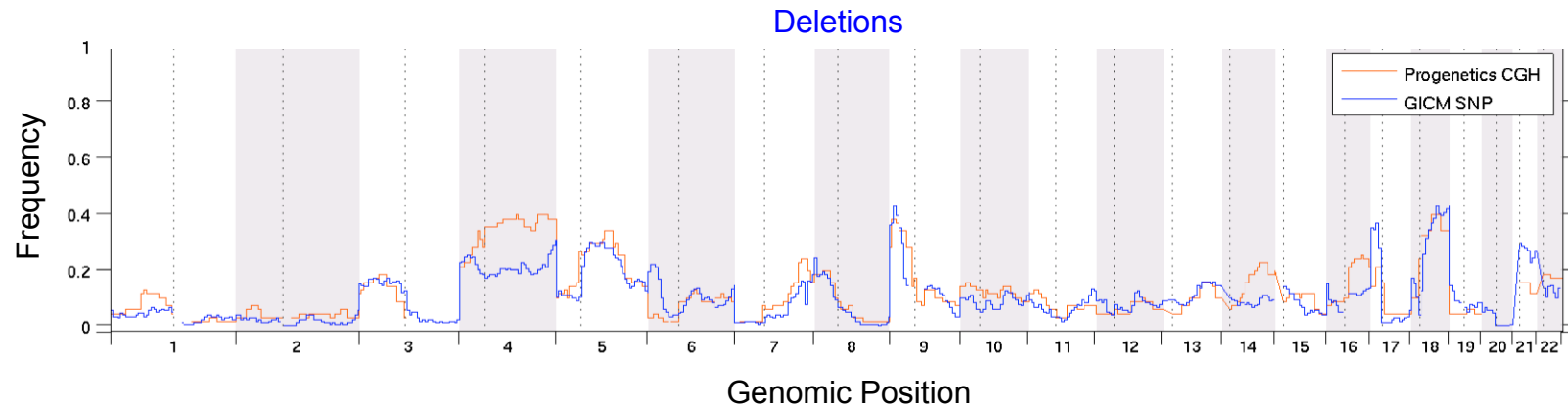
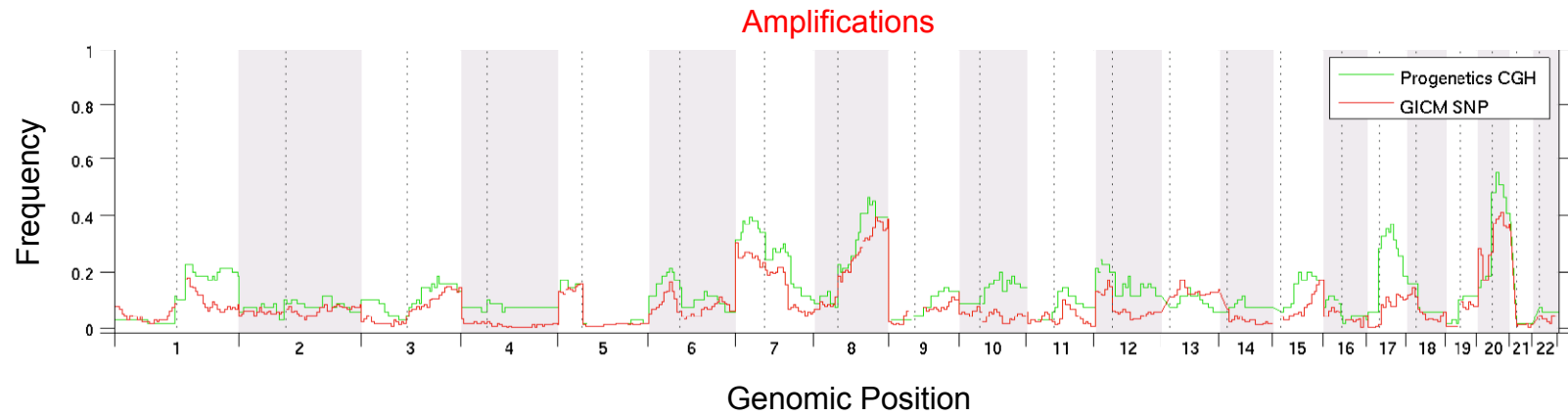
Number of Tumors

GICM n=110  
Progenetix n=741



Figure S5-C

## Esophageal Adenocarcinoma



Number of Tumors

GICM n=186  
Progenetix n=71

Figure S6

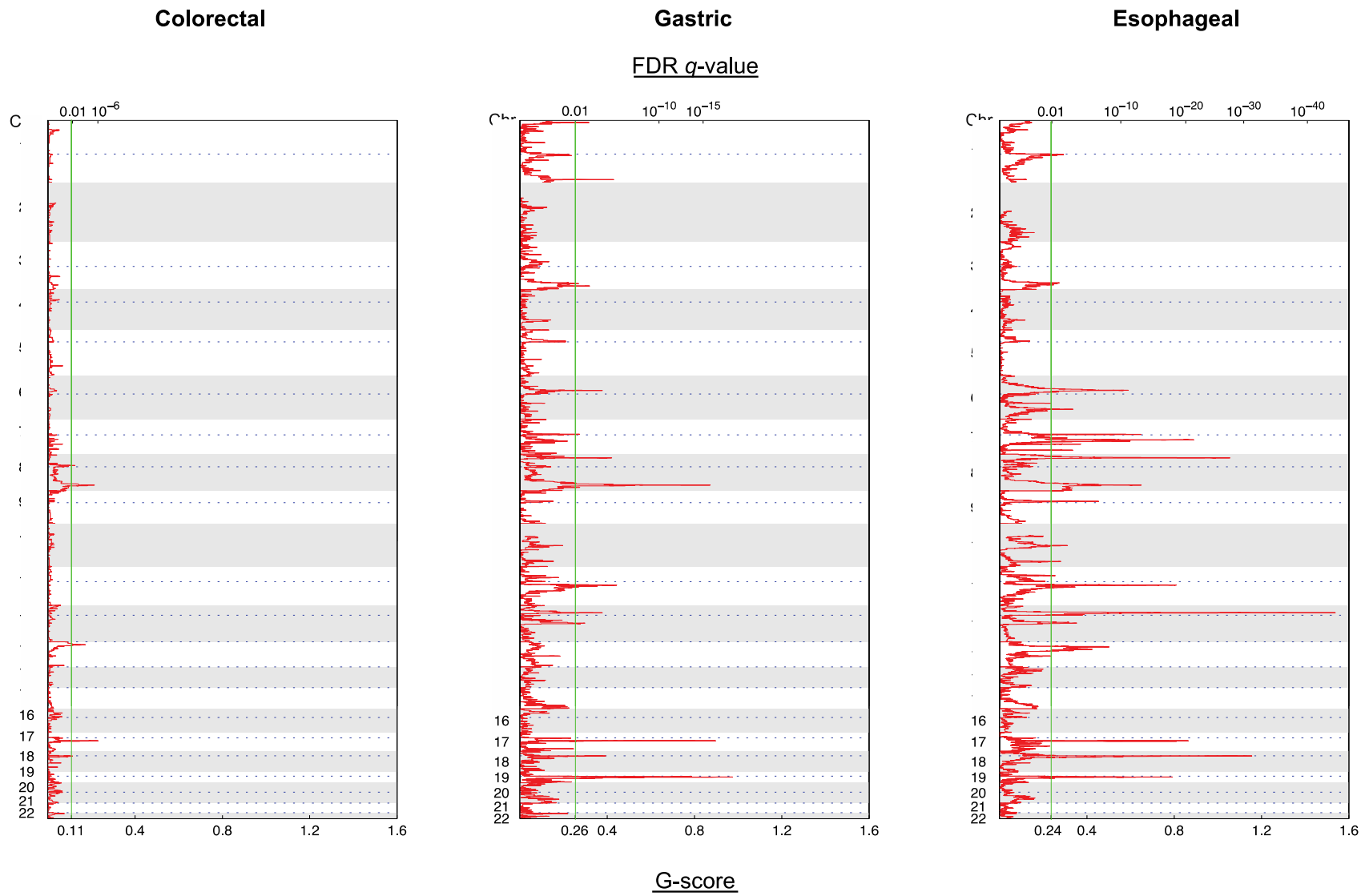


Figure S7

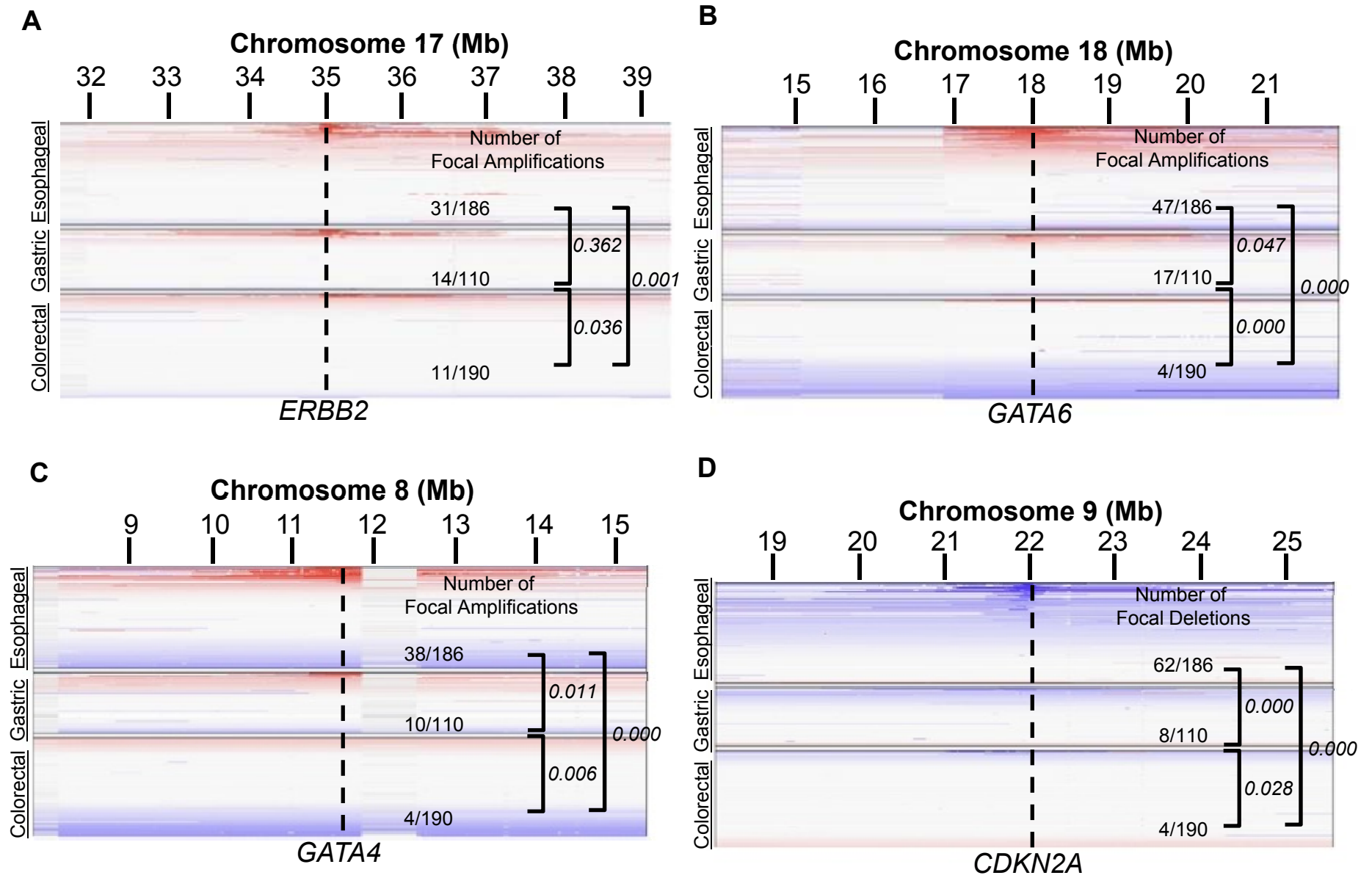
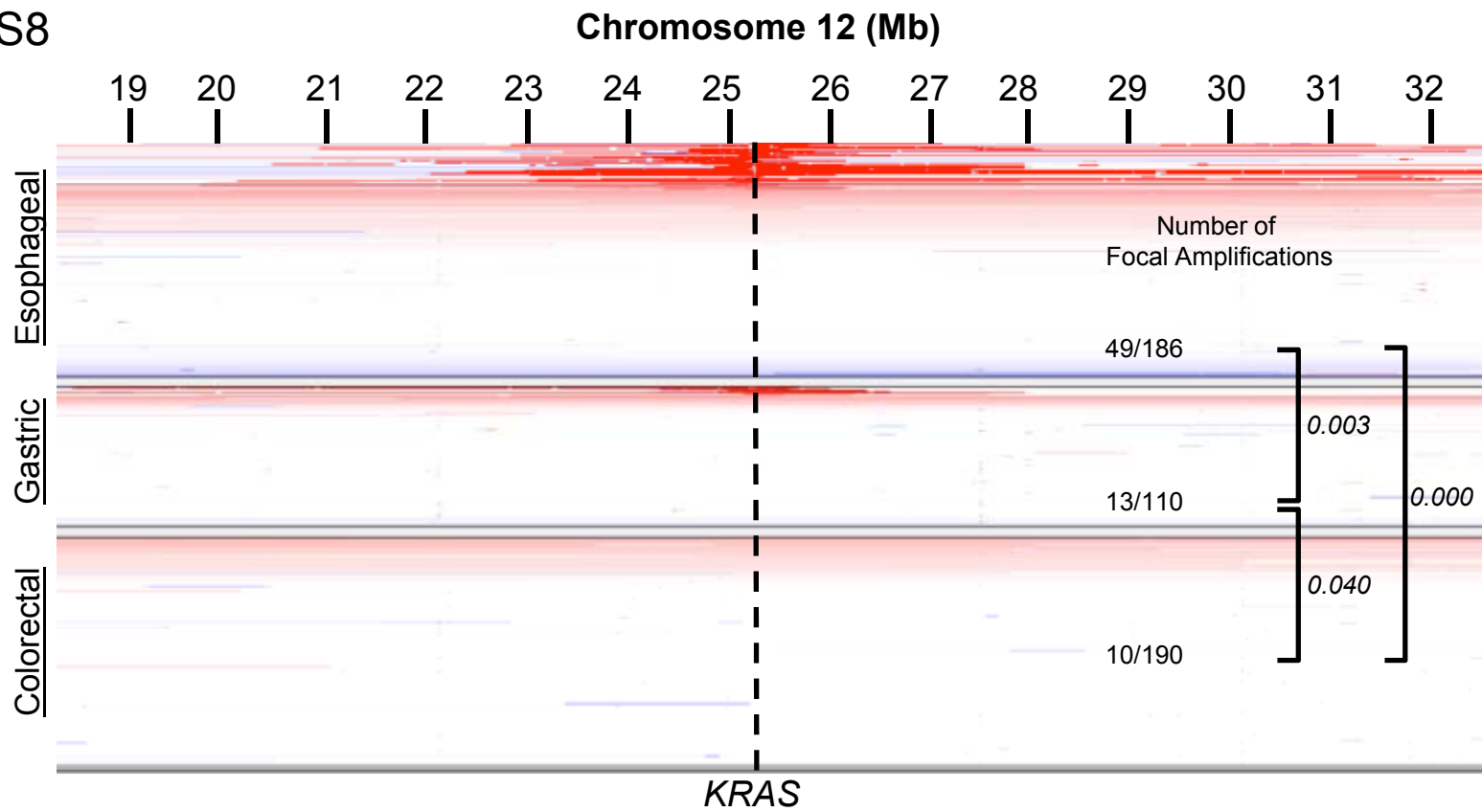


Figure S8



**B**

Percentage of samples with *KRAS* amplification or mutation

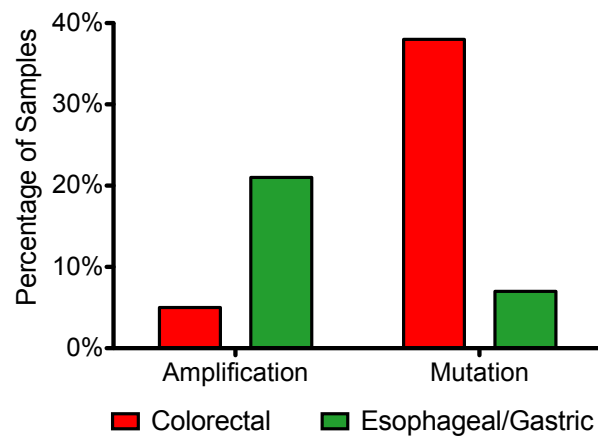


Figure S9

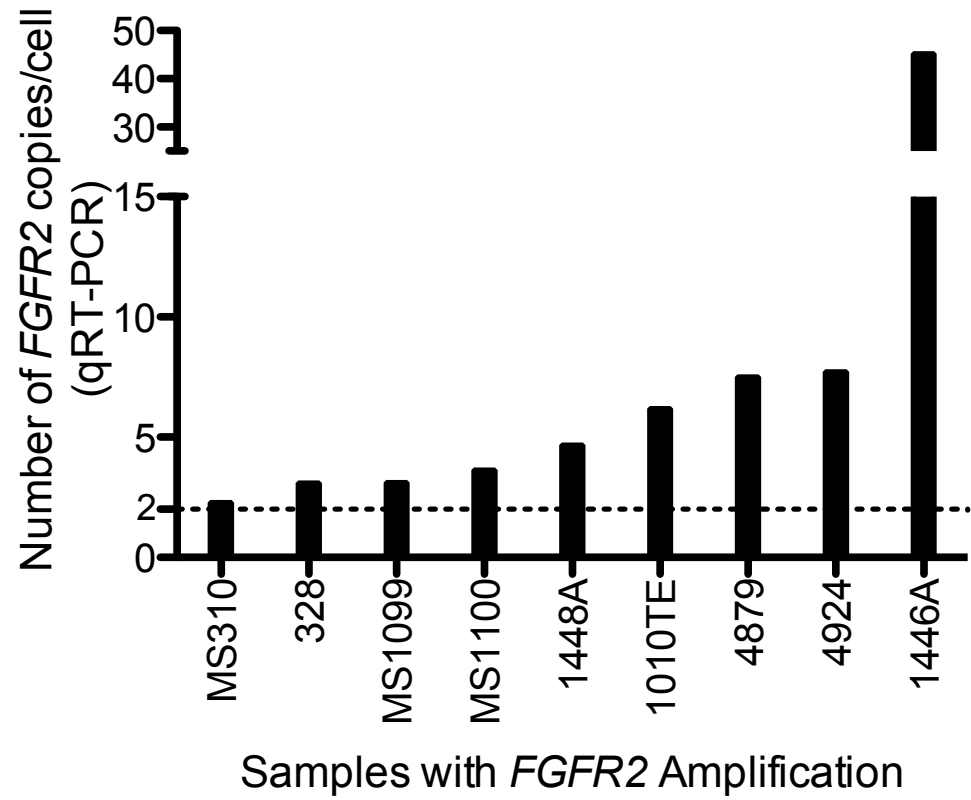
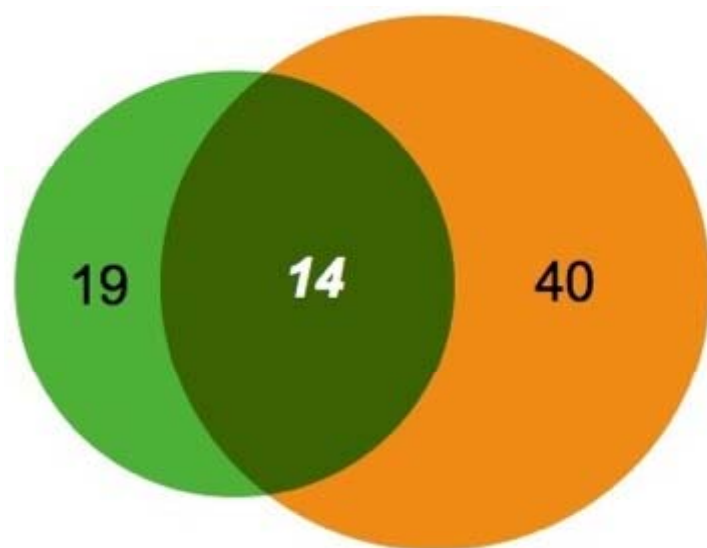


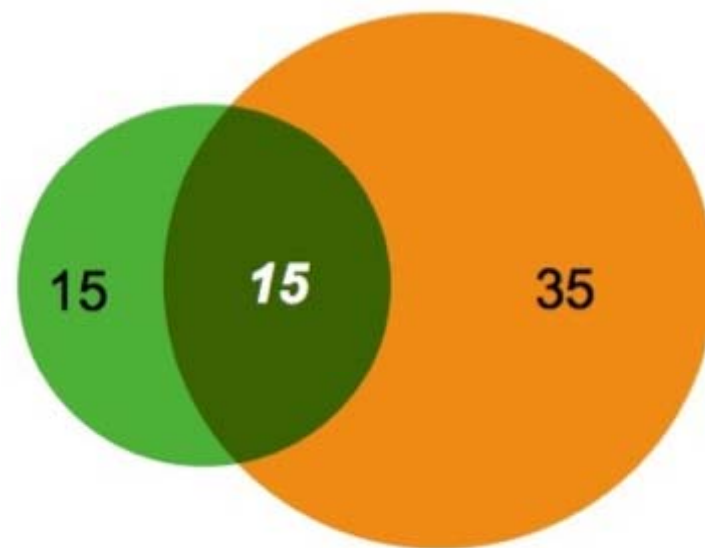
Figure S10

Commonalities across all cancer types

Amplifications



Deletions





Gut adenocarcinomas   
All other cancers 

Figure S11

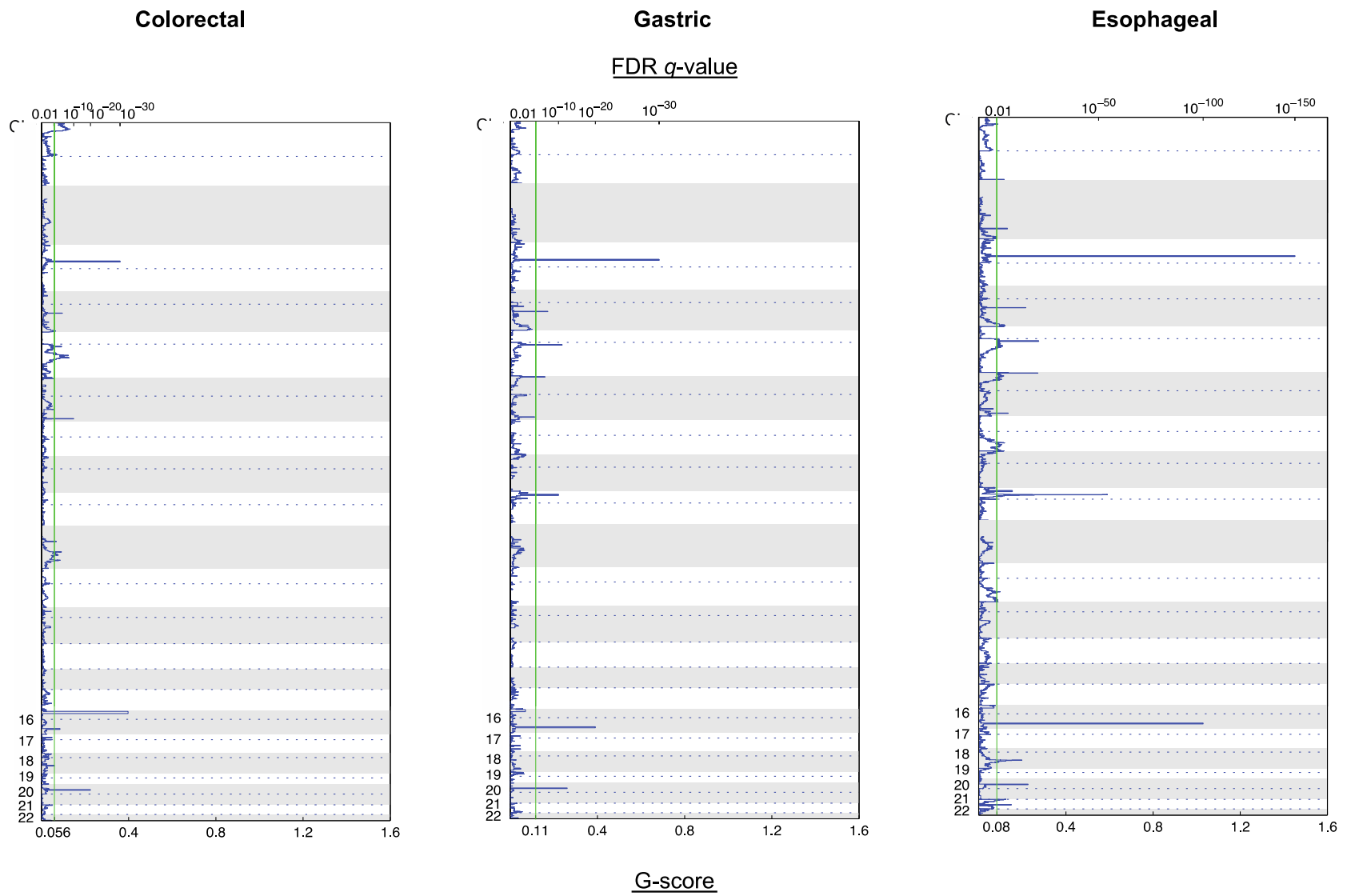


Figure S12

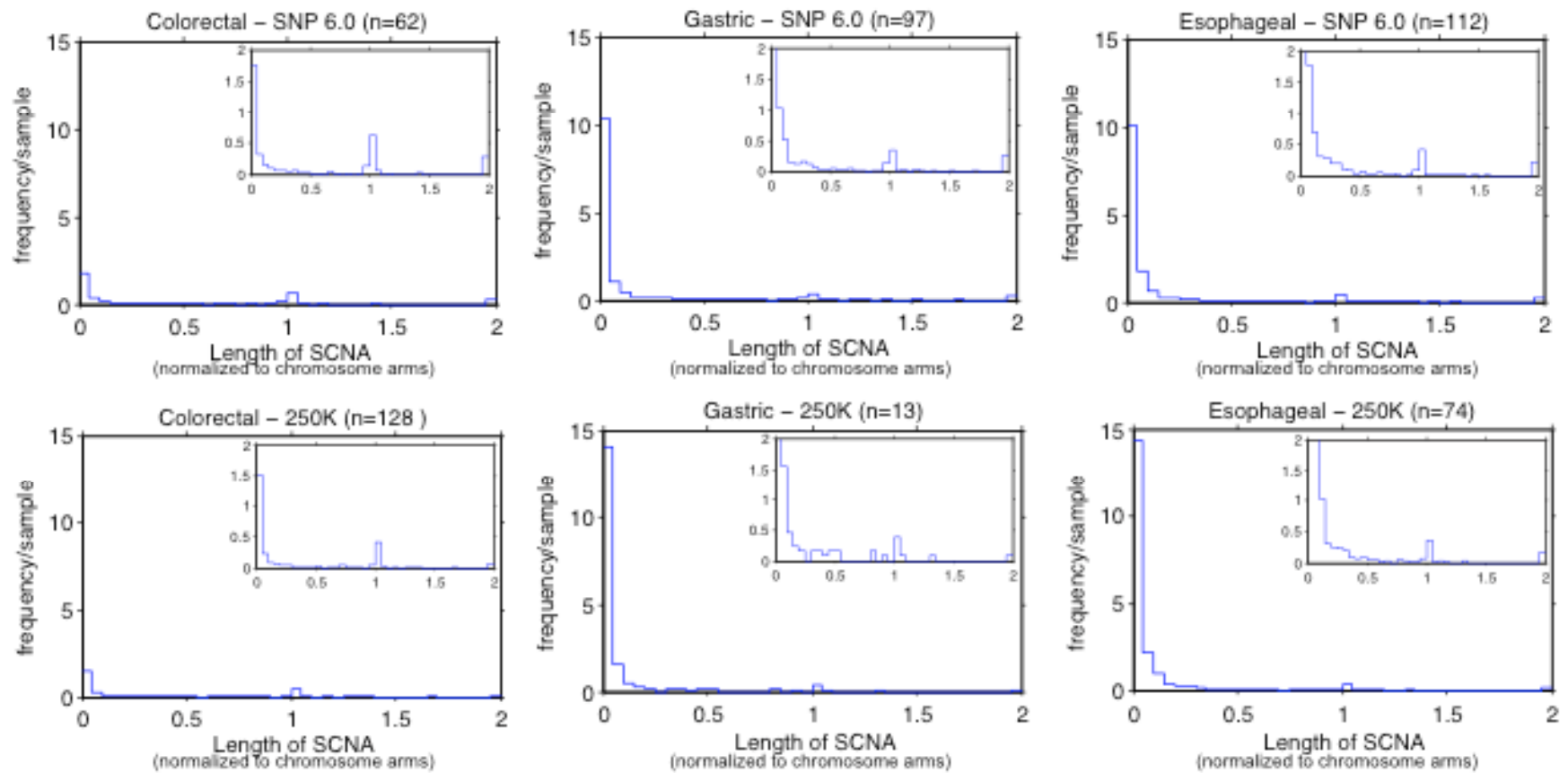




Figure S13

