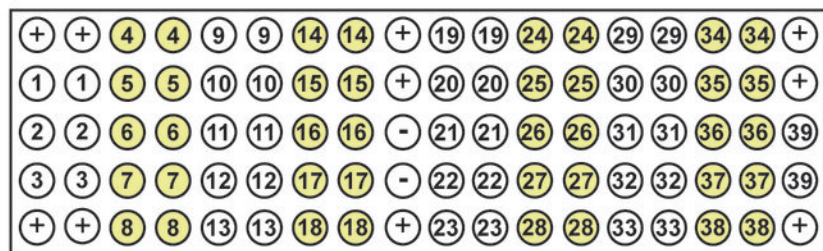


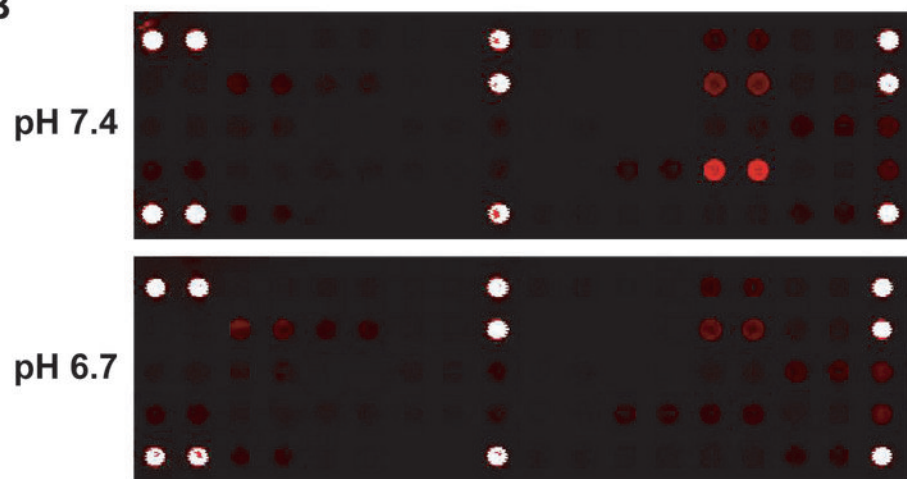
Supplemental Figure 1

A

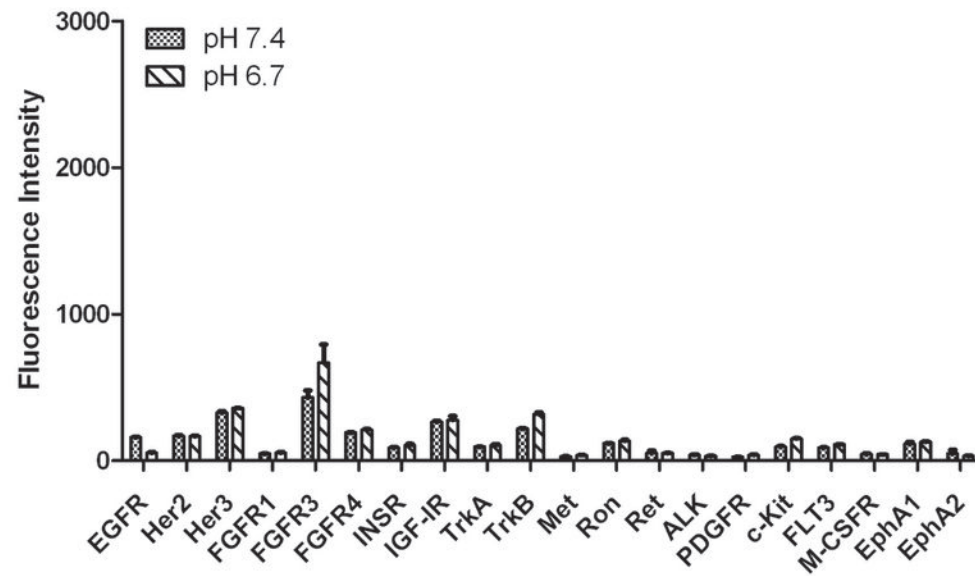


- | | | | | |
|--------------|----------------|-------------------|-------------------------------|------------|
| 1. EGFR/ErB1 | 9. TrkA/NTRK1 | 17. FLT3/Fik2 | 25. Tyro-3/Dtk | 33. c-ABL |
| 2. HER2/ErB2 | 10. TrkB/NTRK2 | 18. M-CSFR/CSF-1R | 26. Axl | 34. IRS-1 |
| 3. HER3/ErB3 | 11. MET/HGFR | 19. EphA1 | 27. Tie2/TEK | 35. Zap-70 |
| 4. FGFR1 | 12. Ron/MST1R | 20. EphA2 | 28. VEGFR/KDR | 36. Src |
| 5. FGFR3 | 13. Ret | 21. EphA3 | 29. Akt (Thr308) | 37. Lck |
| 6. FGFR4 | 14. ALK | 22. EphB1 | 30. Akt (Ser473) | 38. Stat1 |
| 7. InsR | 15. PDGFR | 23. EphB3 | 31. ERK1/2 (Thr202/Tyr204) | 39. Stat3 |
| 8. IGF-IR | 16. c-Kit/SCFR | 24. EphB4 | 32. S6 Ribosomal (Ser235/236) | |

B



C



D

