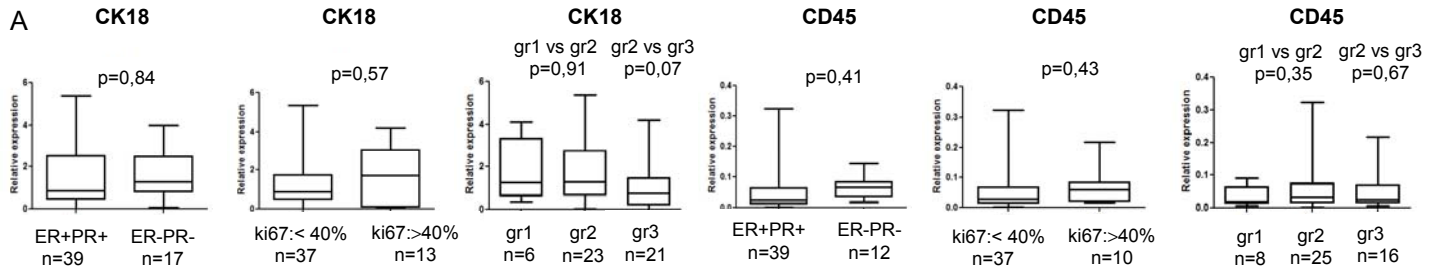
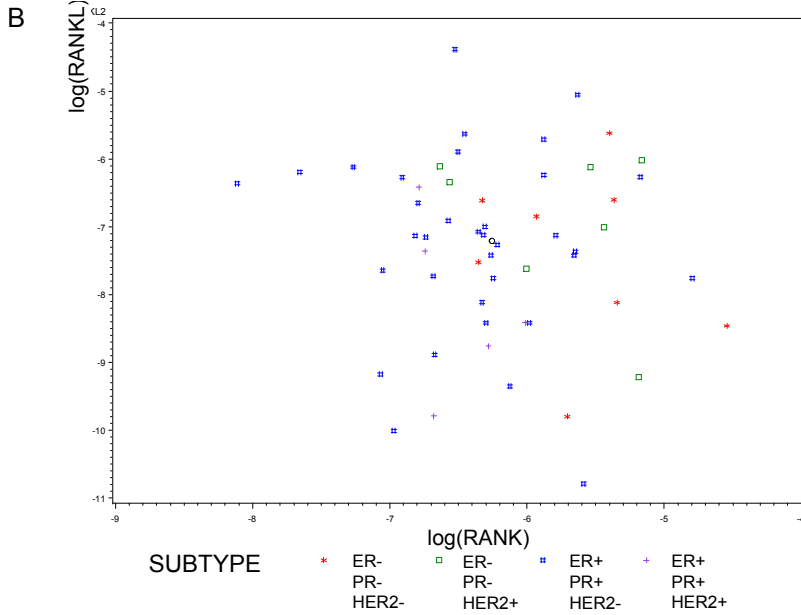


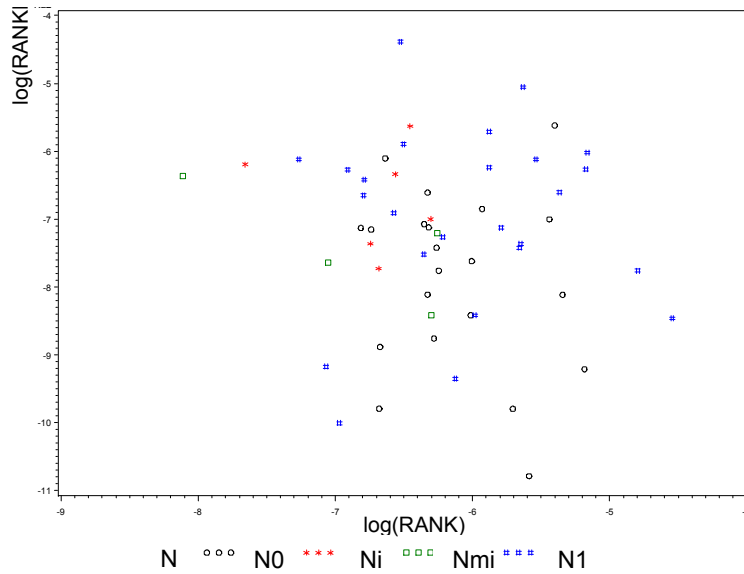
Supplementary Figure 7



Scatterplot log(RANK) vs log(RANKL) by subtype



Scatterplot log(RANK) vs log(RANKL) by N stage



Factor	Statistic	Valor	Pr>F
N	Wilks Lambda	3,14	0,0075
	Hotelling-Lawley Trace	3,14	0,0096
Subtype	Wilks Lambda	2,63	0,0211
	Hotelling-Lawley Trace	2,76	0,0195

Parameter	RANK			RANKL			
	Estimator	st Error	p-val	Estimator	st error	p-val	
Intercept	-6,25	0,29	<.0001	-7,67	0,64	<0,0001	
N	N0	-0,2	0,18	0,283	-0,9	0,4	0,0276
	N1	ref			ref		