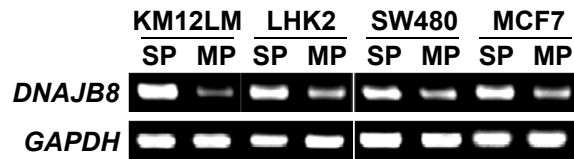


Supplemental Figure 2



Supplemental Figure 2 RT-PCR analysis.

SP and MP cells derived from colon carcinoma cells (KM12LM and SW480), lung carcinoma cell (LHK2) and breast carcinoma cell (MCF7) were addressed the expression of *DNAJB8* by RT-PCR. *GAPDH* was used as a positive control.