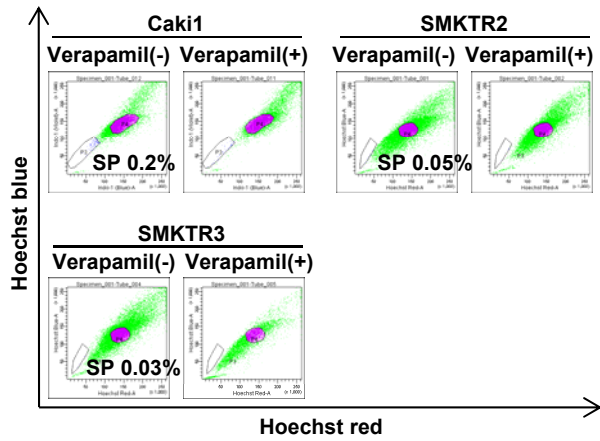


Supplemental Figure 1



Supplemental Figure 1 Isolation of CSCs/CICs from human RCC cells

Caki1, SMKTR2 and SMKTR3 human RCC cell lines were analyzed by staining with Hoechst 33342 dye with or without Verapamil. The percentages of SP cells were 0.2% for Caki1 cells, 0.05% for SMKTR2 cells and 0.03% for SMKTR3 cells.