

Supplementary Figure 1

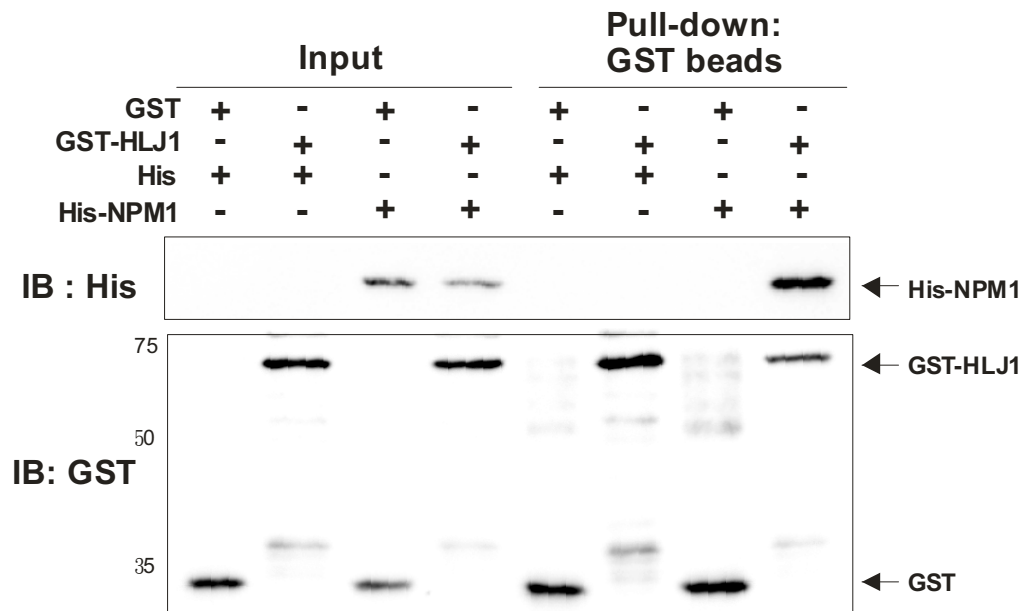


Figure S1. Determination of the interaction between HLJ1 and NPM1 *in vitro*. Recombinant GST-HLJ1 and His-NPM1 were expressed in *E. coli*. The various combinations of mixtures are denoted at the top of figure. The protein mixtures were incubated at 4°C overnight, captured by GST beads, and analyzed by 10% SDS-PAGE, followed by immunoblotting using anti-His and anti-GST antibodies. The inputs were the protein loading controls.