

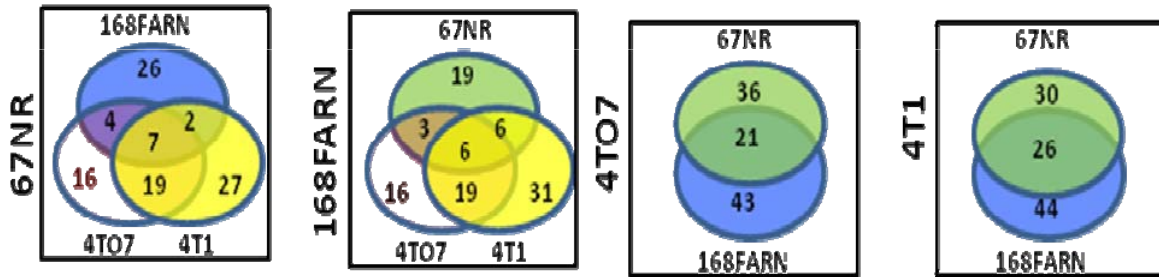
## Supplementary Figure S1

<b>Characteristics</b>	<b>Nb of cases (%)</b>
<b>Age</b>	
≤ 50 years	30 (28.8%)
> 50 years	74 (71.2%)
<b>Menopausal status</b>	
Pre-menopausal	37 (35.6%)
Post-menopausal	67 (64.4%)
<b>Estrogen Receptor status</b>	
Positive	73 (70.2%)
Negative	31 (29.8%)
<b>Histological grade</b>	
Grade I	15 (15.3%)
Grade II	49 (50%)
Grade III	34 (34.7%)
<b>Lymph node status</b>	
Positive	64 (61.5%)
Negative	40 (38.5%)
<b>Metastatic relapse</b>	
Metastasis	32 (30.8%)
Metastasis-free	72 (69.2%)

## Supplementary Figure S2

<b>Tumor</b>	<b>Number of mice analyzed</b>	<b>Number of animals with metastasis</b>	<b>Mean number of lung metastasis (range)</b>	<b>Median size of lung metastasis (range)</b>
67NR	8	0	-	-
168FARN	11	0	-	-
4T07	15	1	1	0.5mm
4T1	13	11	2 (1-7)	0.4mm (0.2-0.7mm)

Supplementary Figure S3

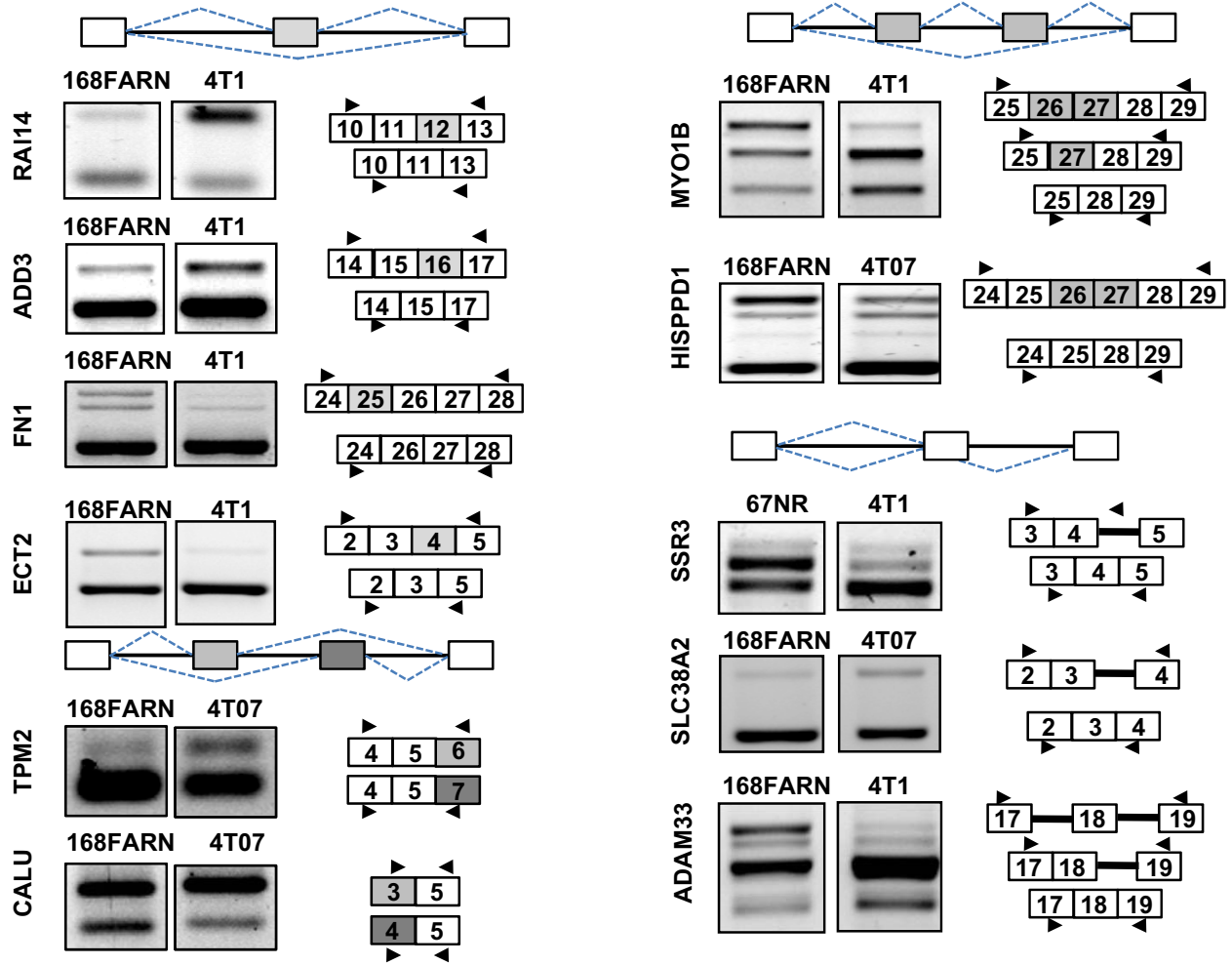


## Supplementary Figure S4

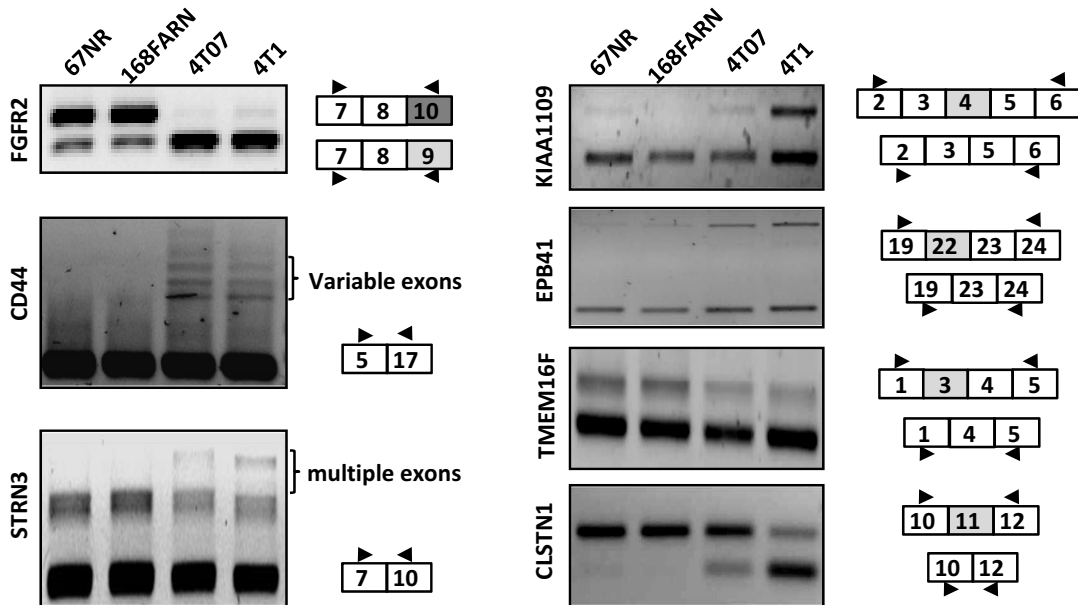
		genes	p-value
Diseases and disorders	Cancer	212	$2.10^{-6}$ - $7.75.10^{-3}$
	Reproductive system disease	97	$2.10^{-6}$ - $7.75.10^{-3}$
Molecular and cellular functions	Cell morphology	94	$2.5.10^{-7}$ - $7.75.10^{-3}$
	Cellular movement	113	$3.9.10^{-7}$ - $7.7.10^{-3}$

# Supplementary Figure S5

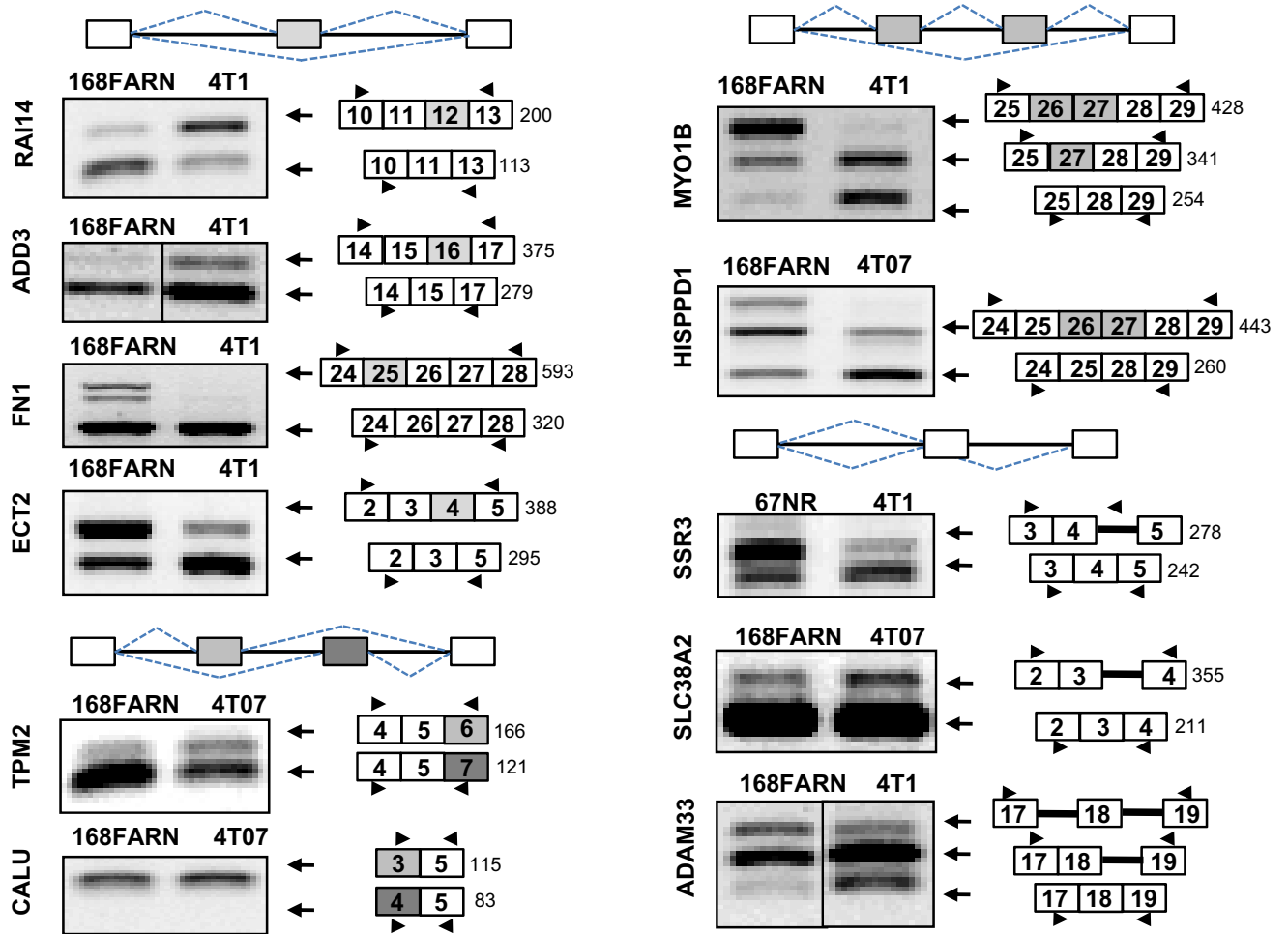
**A**



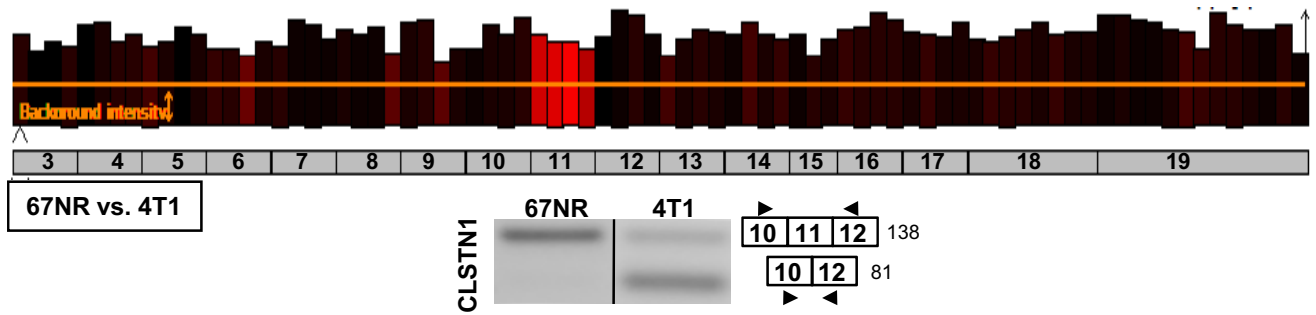
**B**



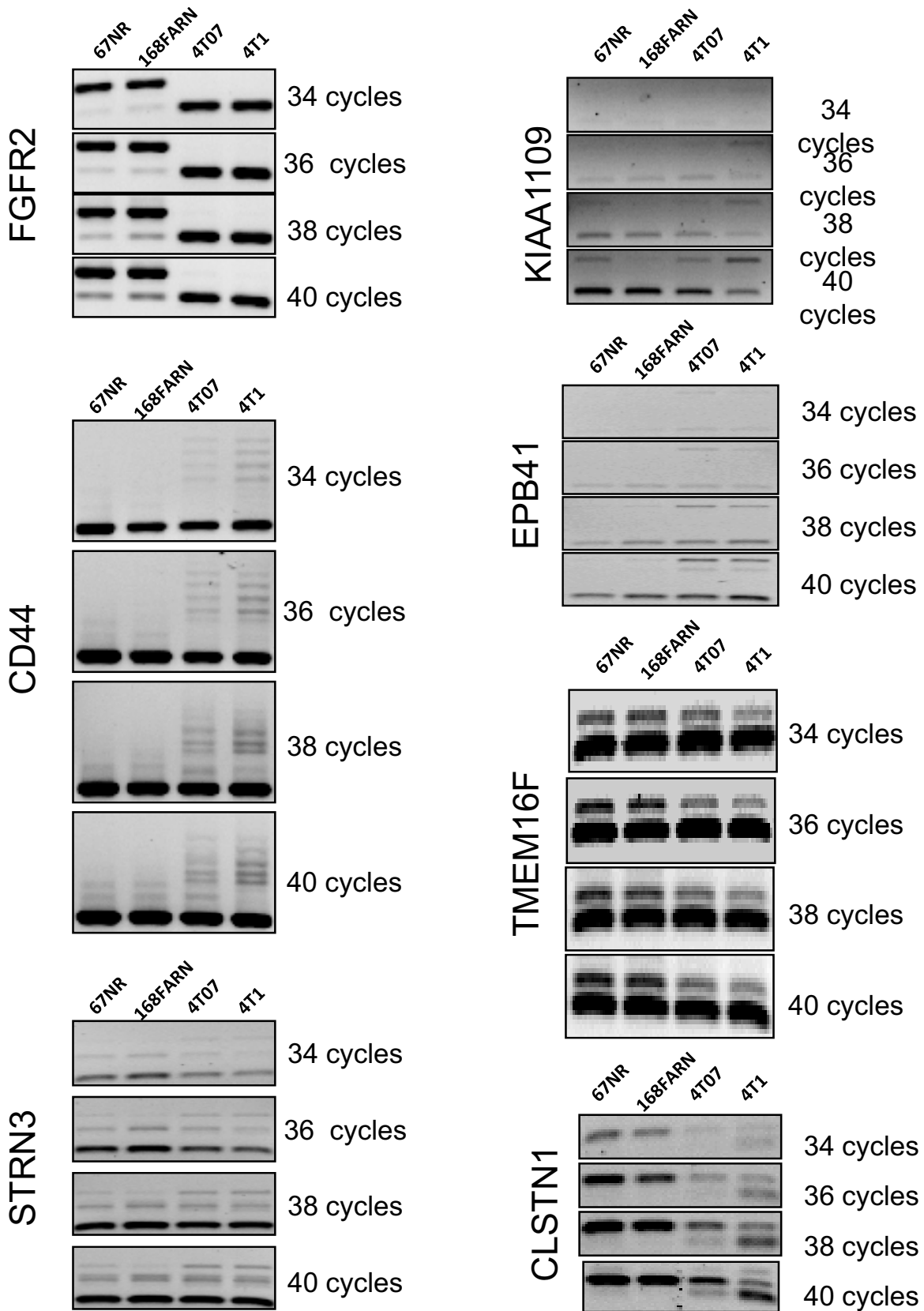
# Supplementary Figure S6



# Supplementary Figure S7

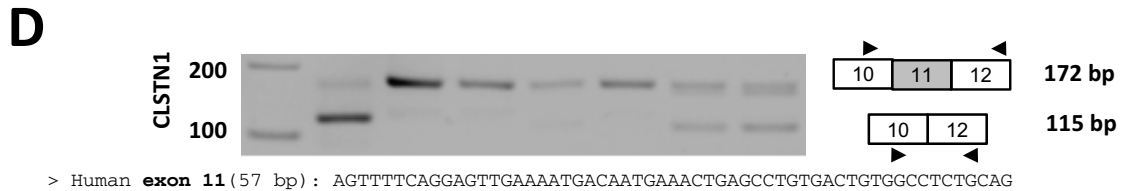
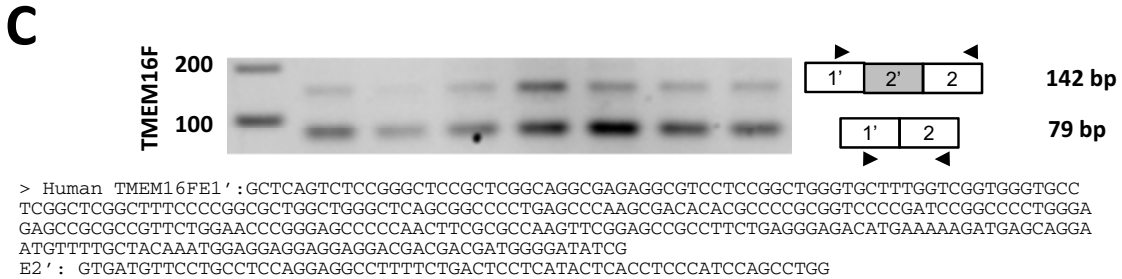
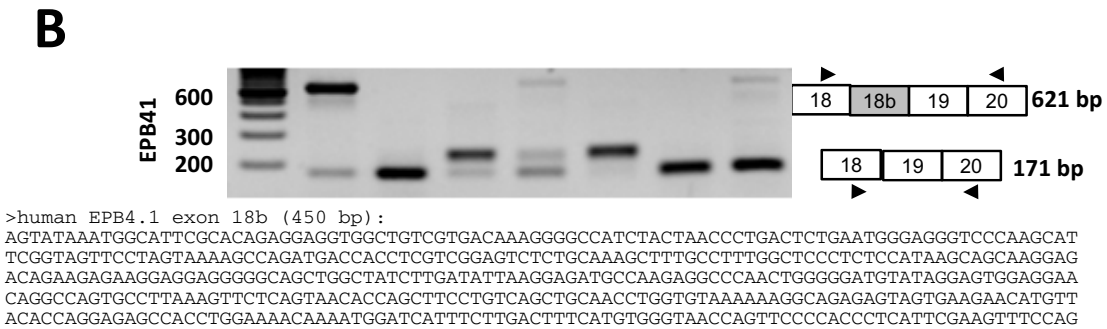
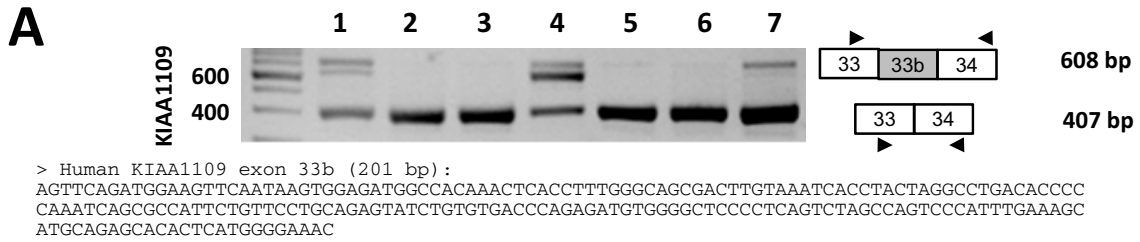


# Supplementary Figure S8

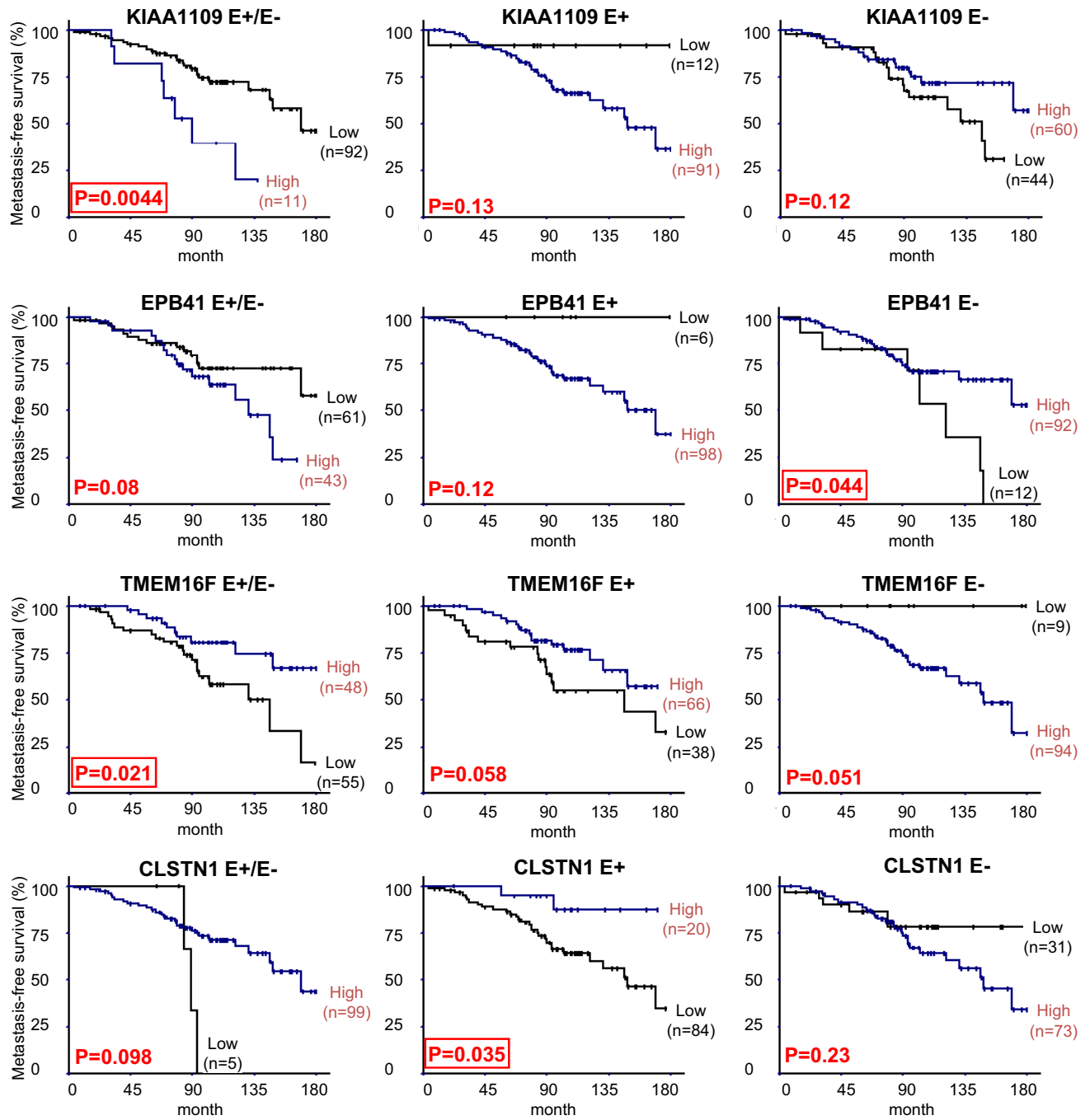




## Supplementary Figure S9



# Supplementary Figure S10



# Supplementary Figure S11

