

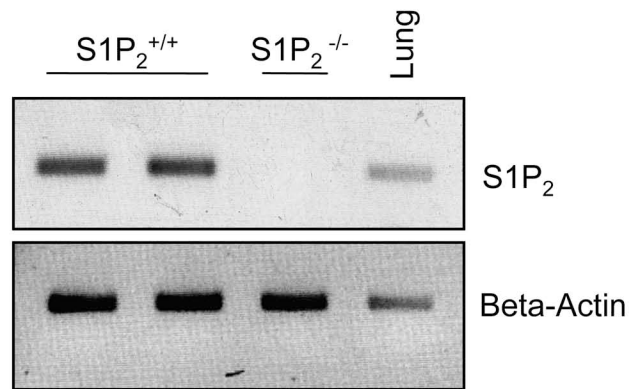
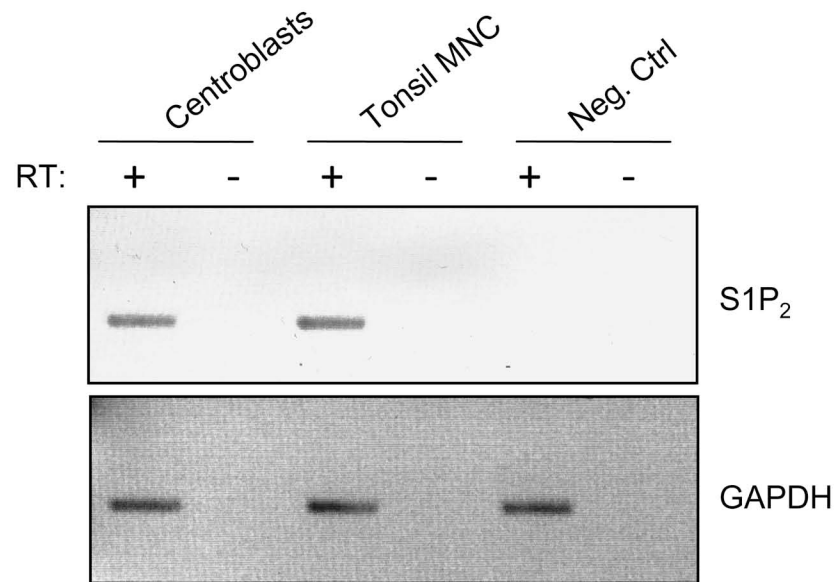
A**B**

Figure S6. S1P₂ is expressed in both human and mouse germinal center B cells. **A)** Expression of S1P₂ in mouse GC B cells. RT-PCR was performed on Dnase I-treated RNA obtained from wild type (+/+) and knock-out (-/-) mouse GC B cells. RNA extracted from mouse lung, known to express high levels of S1P₂, was used as a positive control. **B)** Expression of S1P₂ in human GC B cells. RT-PCR analysis was performed with and without reverse transcriptase (RT) on MACS- purified human centroblasts and tonsil mononucleated cells (MNC).