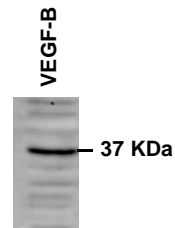


A-MB-MDA435

Treatment 48h	VEGF-A (pg/10 ⁴ cells±SE)	VEGF-C
Basal medium (FCS 0.5%)	14.5 ±0.3	negative
Growth medium	15.1 ±0.7	negative



B-A375

Treatment 48h	VEGF-A (pg/10 ⁴ cells±SE)	VEGF-C
Basal medium (FCS 0.5%)	39.7 ±0.4	31.7±1.2
Growth medium	61.0 ±1.2	61.0±1.2

