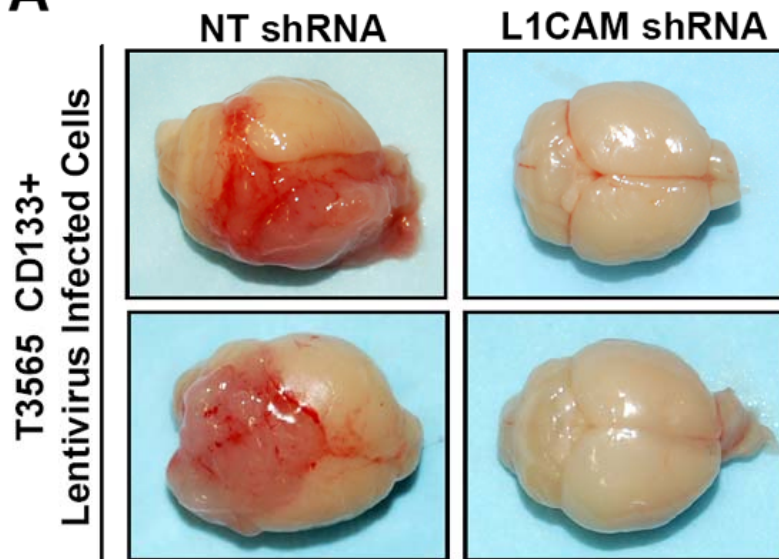
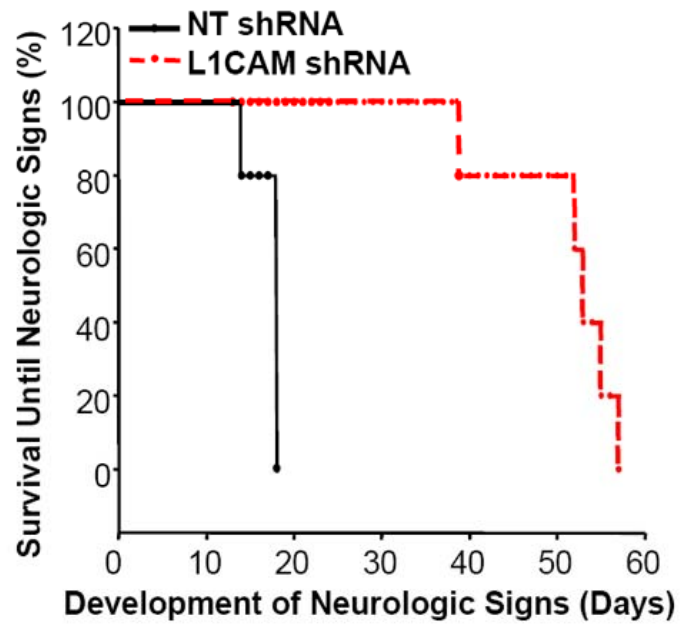


A**B****C**

shRNA	T4105 CD133+ Lentivirus Infected Cells				
	Cell Number	1000000	100000	10000	1000
Non-Targeting	Incidence	5/5	5/5	5/5	5/5
	Median Survival	18	35	46	72
L1CAM	Incidence	5/5	5/5	4/5	0/5
	Median Survival	31	52	71	--

D

shRNA	T3565 CD133+ Lentivirus Infected Cells					
	Cell Number	1000000	100000	10000	1000	500
Non-Targeting	Incidence	5/5	5/5	5/5	5/5	4/5
	Median Survival	18	32	55	69	88
L1CAM	Incidence	5/5	5/5	0/5	0/5	0/5
	Median Survival	33	64	-	-	-