

A

	Control	10 μ M	20 μ M
WT	3,2 \pm 0,8	12,9 \pm 1,7	26,2 \pm 1,2
<i>bak</i> ^{-/-}	2,5 \pm 0,8	11,6 \pm 4,4	22,7 \pm 6,1
<i>bax</i> ^{-/-}	1,7 \pm 0,7	15,1 \pm 4,5	25,7 \pm 5,0
DKO	1,1 \pm 0,2	1,3 \pm 0,3	1,1 \pm 0,3

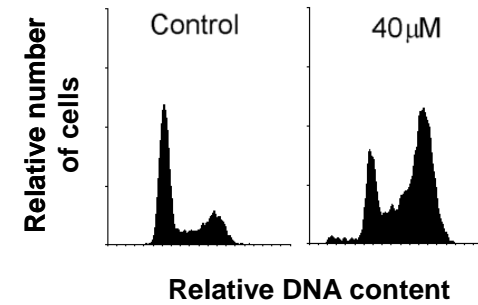
B

Figure S2. (A) Wild type (WT), deficient in Bak (*bak*^{-/-}), deficient in Bax (*bax*^{-/-}), or double knockout (DKO) deficient in Bak and Bax MEFs were treated with edelfosine for 24 h at the indicated concentrations and percent of apoptotic cells was calculated. Untreated control cells were also run in parallel. Data shown are mean \pm SEM ($n=3$). (B) DKO cells were incubated in absence (Control) or presence of 40 μ M edelfosine for 24 h and cell cycle distribution was analyzed by flow cytometry. Data shown are representative of 3 experiments performed.