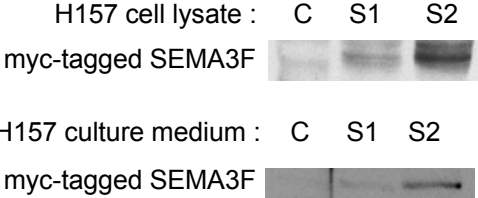
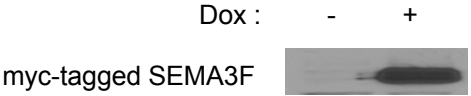


# Potiron Fig. S1

A

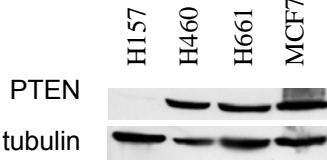


B



C

H157 PTEN exon 7: ADPQFVVCQLKVKIYSSNSGPTRREDKFKMYFEFPQPLPVCCCDIKVEFFHKQNKMLK  
wild type PTEN: ADPQFVVCQLKVKIYSSNSGPTRREDKFKMYFEFPQPLPVCGGDIKVEFFHKQNKMLK



## Potiron Table S1

cell line	SEMA3F	NRP1	NRP2	VEGF
H157C	0,070	1,560	0,730	0,022
H157S1	26,790	0,780	0,590	0,007
H157S2	93,300	2,060	0,680	0,007
H460C	0,010	0,170	0,000	0,009
H460S1	53,590	0,280	0,000	0,005
H460S2	50,000	0,340	0,000	0,005
MCF7C	1,136	ND	ND	0,084
MCF7S	26,243	ND	ND	0,100
COS7C	1,520	0,270	0,050	0,662
COS7S	33,915	0,110	0,010	0,173

## Legends and Materials and Methods to Supplementary Figures / Tables.

**Figure S1.** *A*, Anti-myc immunoblot demonstrates expression of myc-tagged SEMA3F in H157 cell lysates and culture media. *B*, Anti-myc immunoblot demonstrates induction of myc-tagged SEMA3F in H157 cell lysates, after treatment for 4 days with doxycycline 100 ng/ml. *C, Top*, Amino acid sequence of PTEN exon 7 deduced from DNA sequencing in H157 cells is compared to wild type (WT) sequence. Arrowhead indicates mutation. *C, Bottom*, PTEN immunoblot in cell lines including the PTEN positive MCF7 cell line. Tubulin shows protein loadings.

**Table S1.** Messenger RNA expression of NRPs, SEMA3F and VEGF in cell lines measured by quantitative real-time RT-PCR. Values are expressed in % of GAPDH. ND = not determined.

**Supplementary Materials and Methods.** Mutation analysis of PTEN was performed by the UC Cancer Center DNA Sequencing Core. Real-time RT-PCR primers for NRP1 were 5'-ATC ACG TGC AGC TCA AGT GG-3' and 5'-TCA TGC AGT GGG CAG AGT TC-3', for NRP2 5'-GGA TGG CAT TCC ACA TGT TG-3' and 5'-ACC AGG TAG TAA CGC GCA GAG-3', and for SEMA3F 5'-AGC AGA CCC AGG ACG TGA G-3' and 5'-AAG ACC ATG CGA ATA TCA GCC-3'. Polyclonal rabbit anti-PTEN antibody was from Cell Signaling (1/1000) and anti-myc was from Sigma (1/1000).