

Supplementary Fig. 6

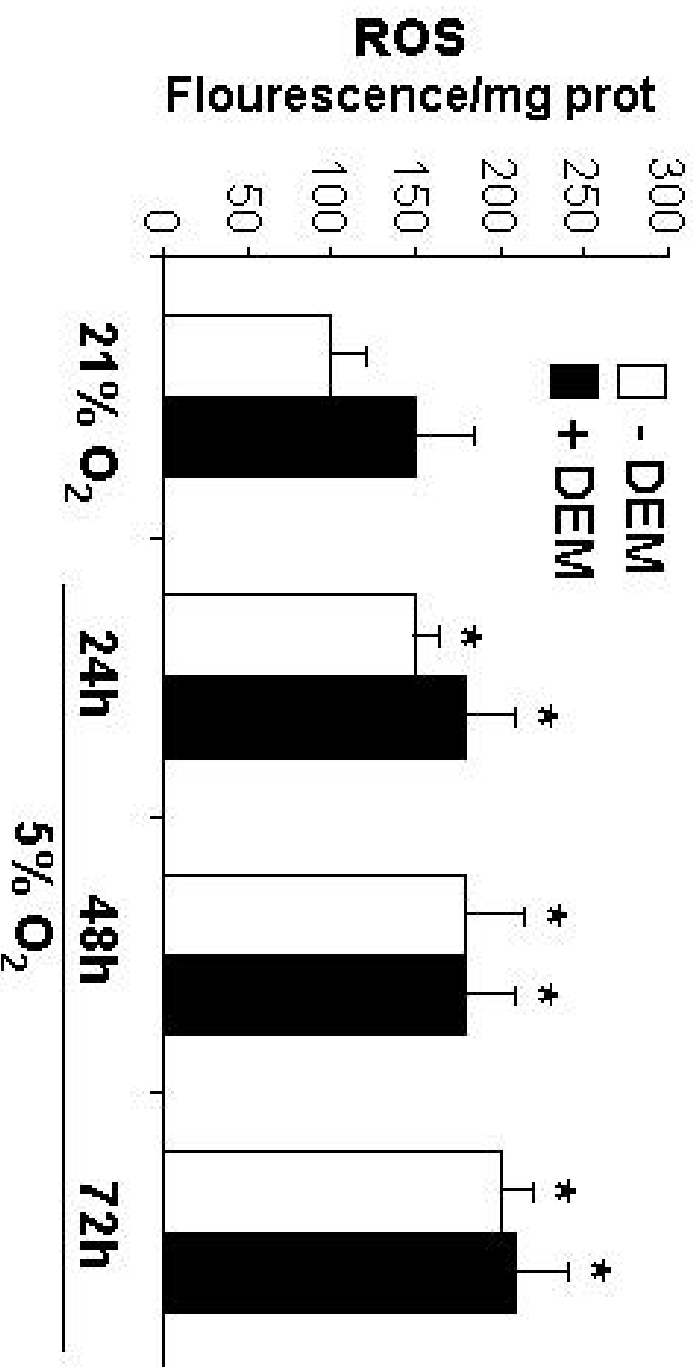


Figure 6. **Role of cytosolic GSH in the ROS production of HepG2 cells during 5% O₂ incubation.** HepG2 cells were preincubated with DEM (0.2 mM) to deplete cytosolic GSH levels and after exposure to 5% O₂ for 72 hours the ROS generation was determined. The data is the mean \pm SD of 3-4 experiments. *p<0.05 vs. cells without DEM.