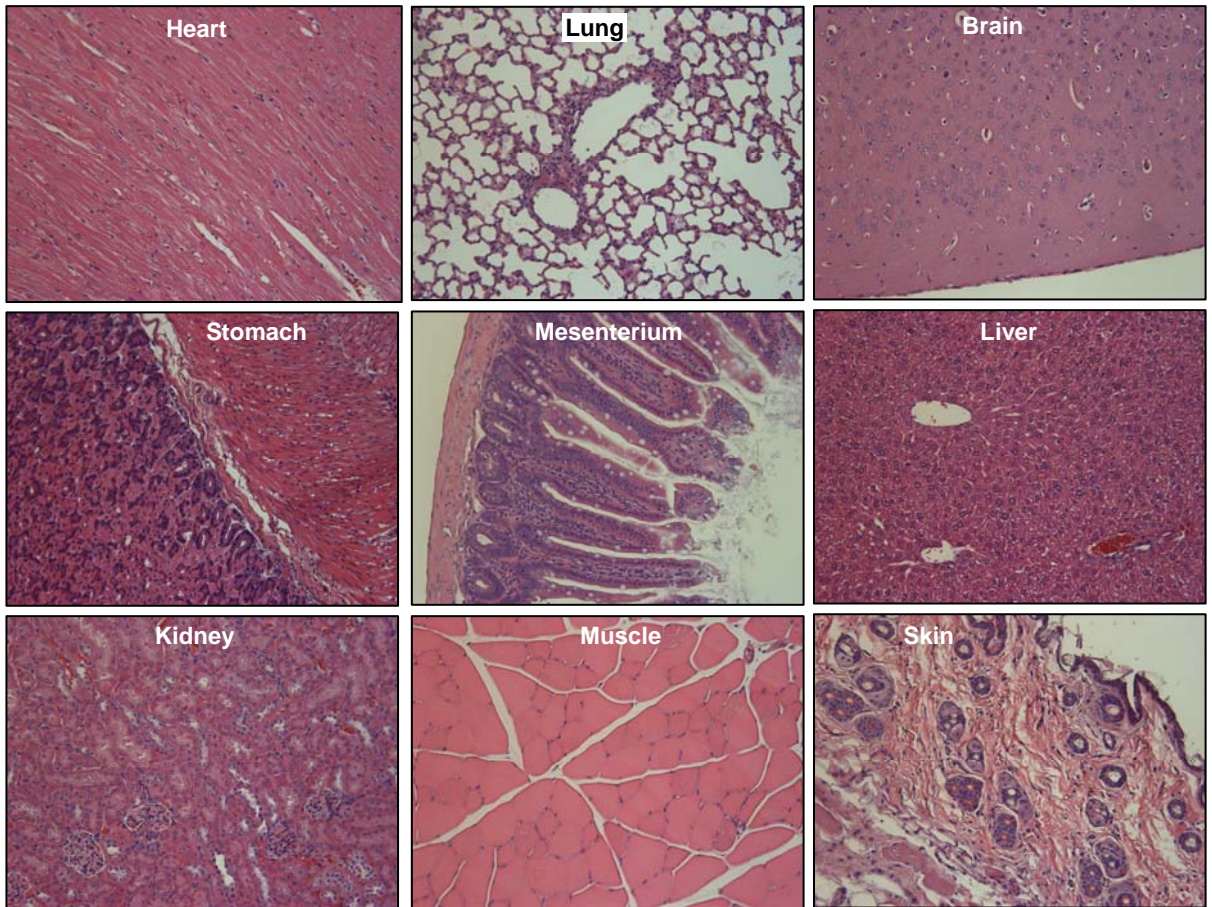


Supplementary Fig.3



Immunohistochemistry: To assess autoimmune reactions in TC-1/αCTLA-4-γ1 and TC-1 tumor-bearing mice, animals were sacrificed 25 days post tumor-transplantation, organs and skin collected, paraffin embedded, and sectioned for H&E staining (3 animals/group). Representative organ sections of TC-1/αCTLA-4-γ1 tumor-bearing mice are shown (Magnification 20x).