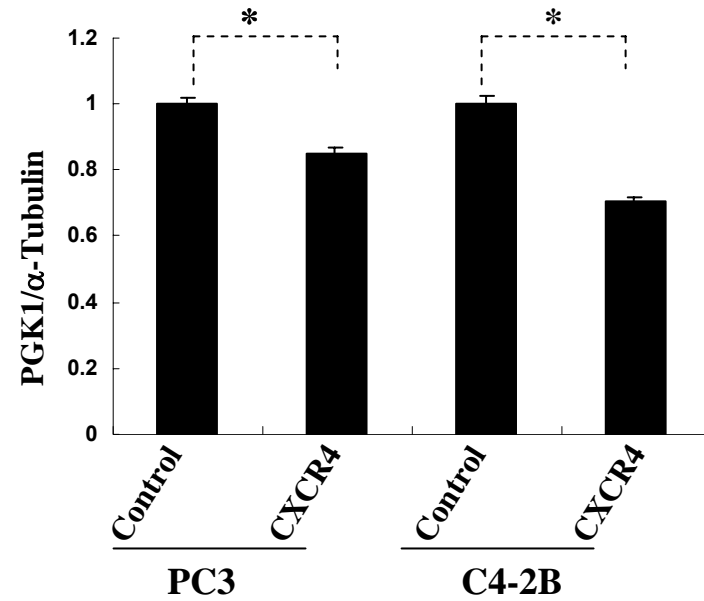
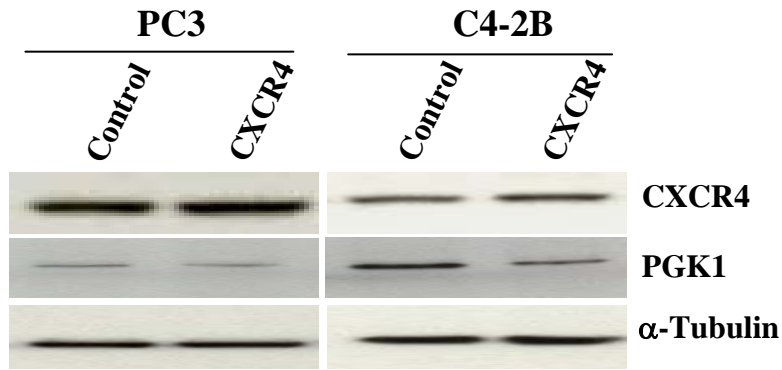
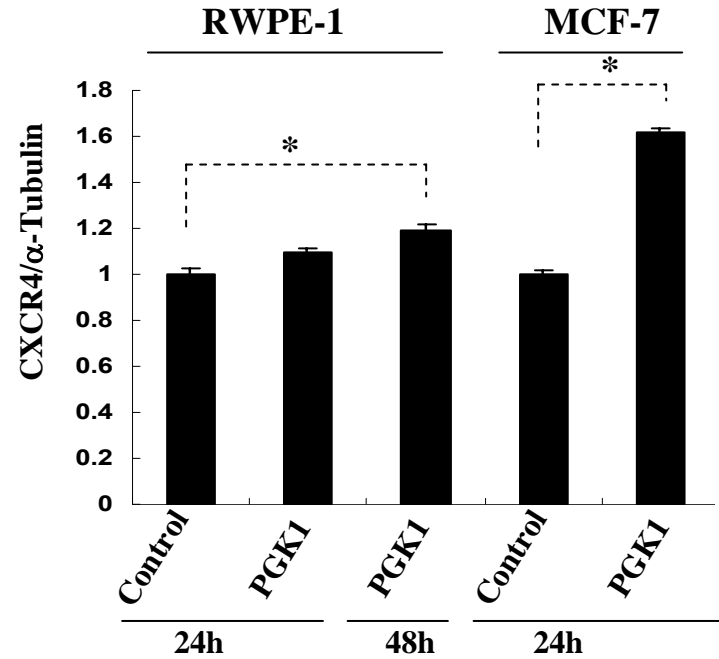
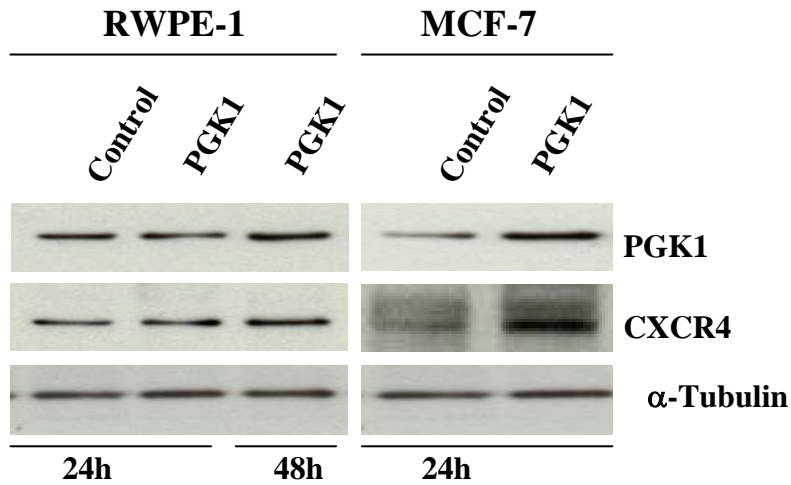
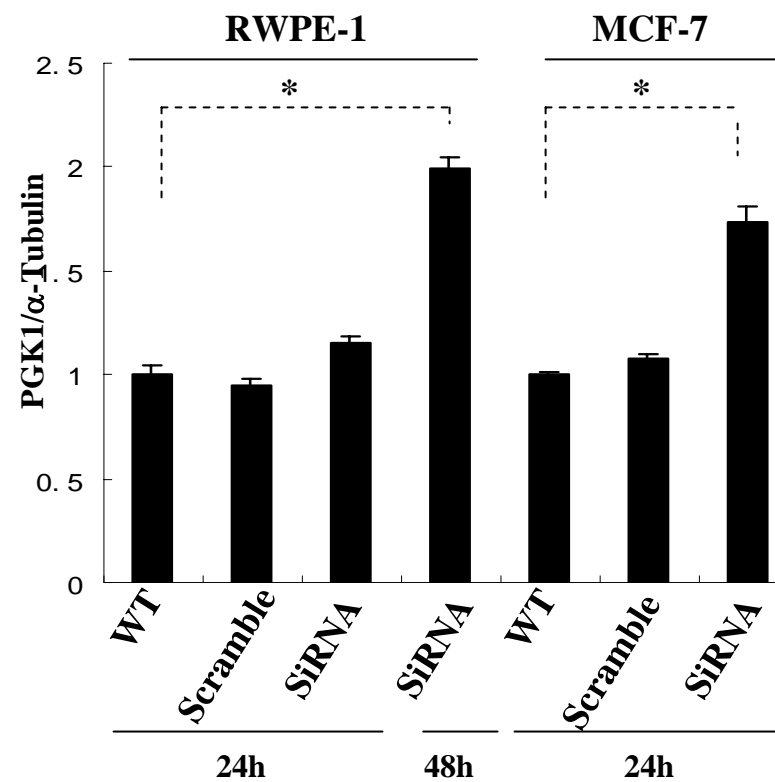
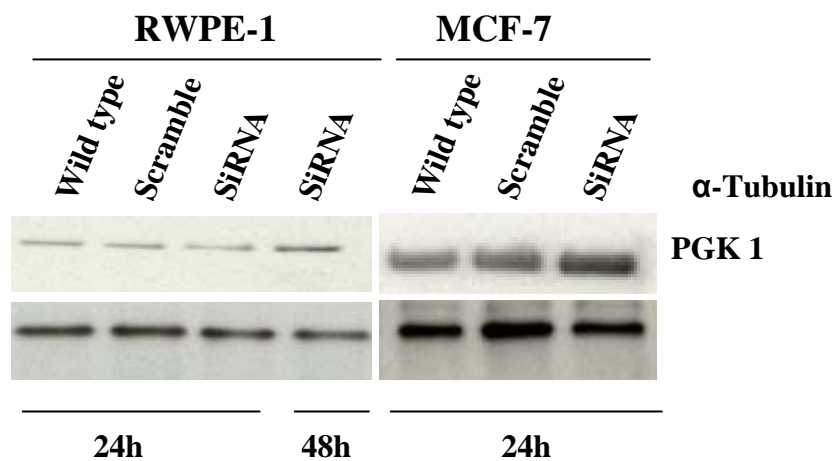


Wang *et al.* Supplemental Figure 1.

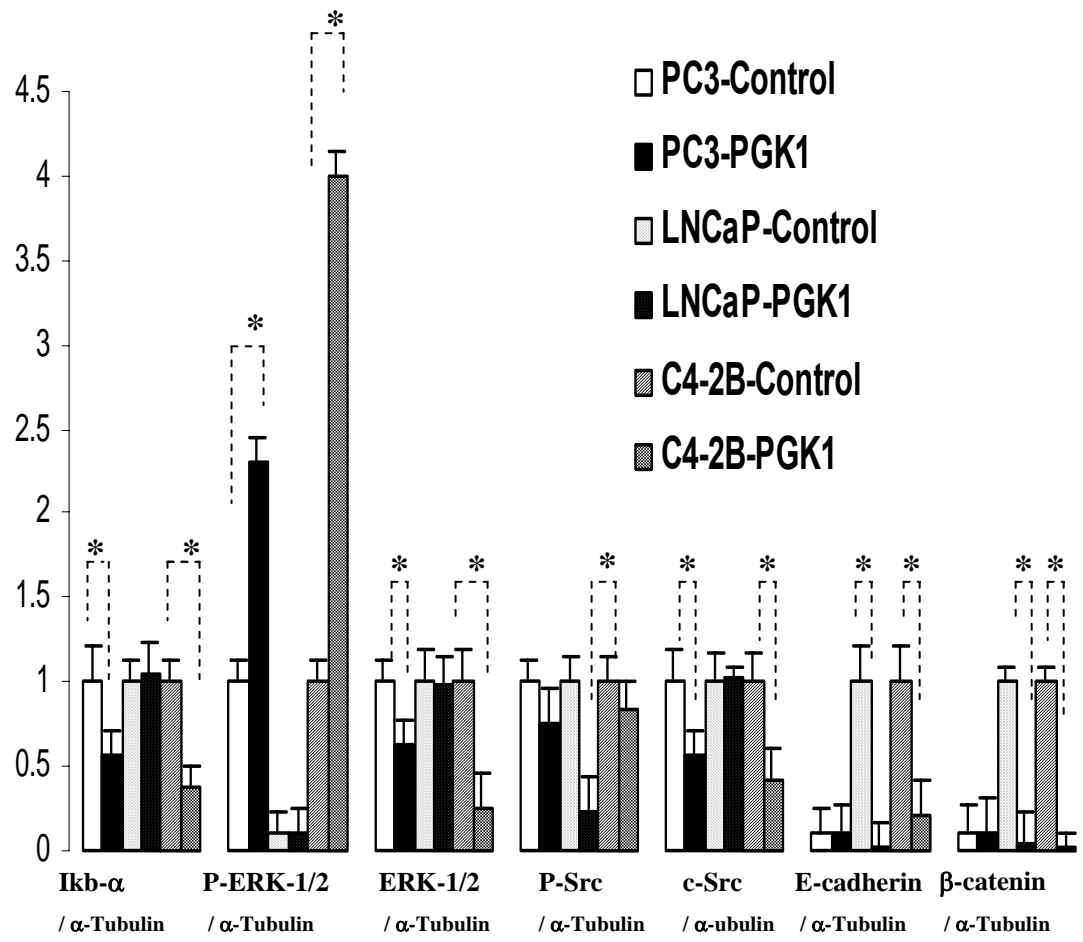
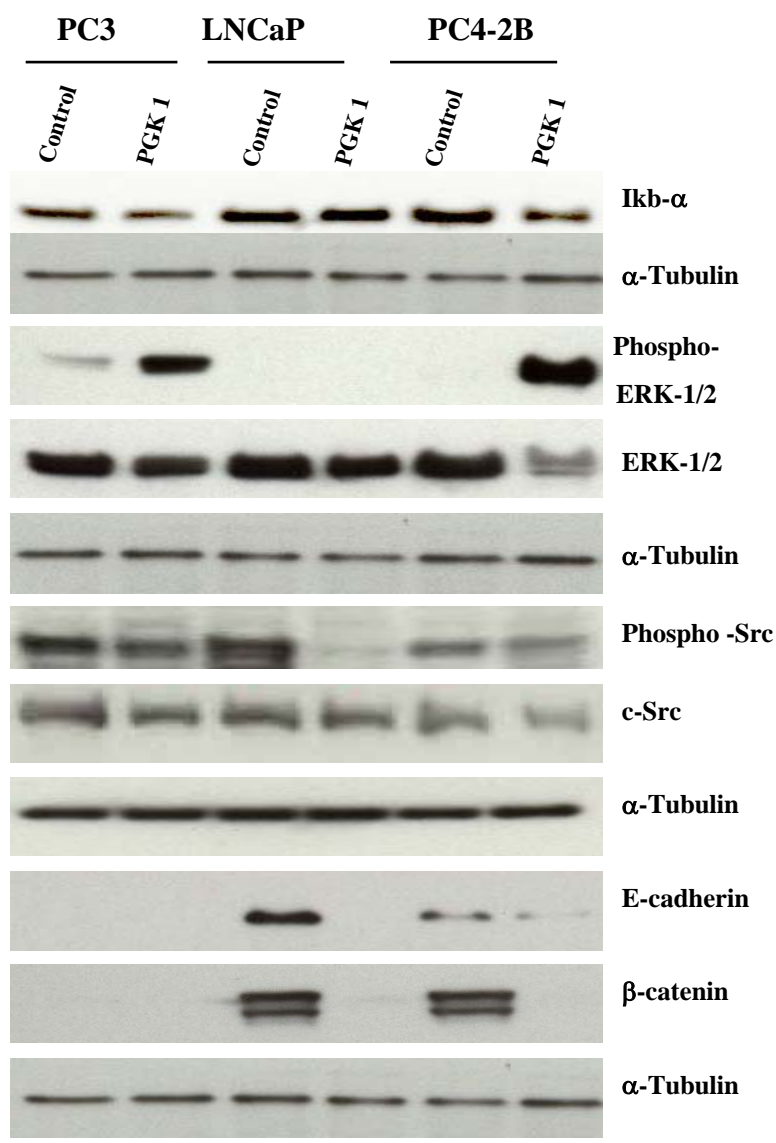
A.**B.**

C.

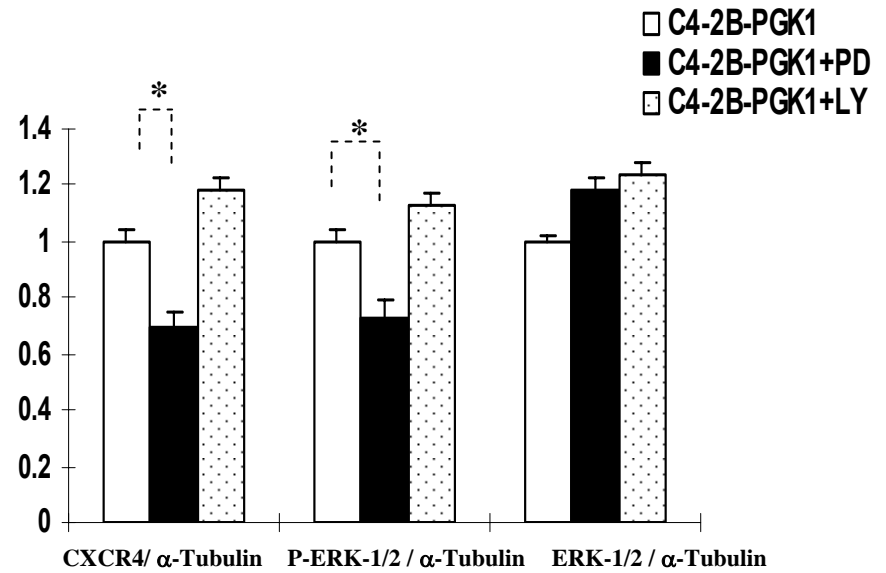
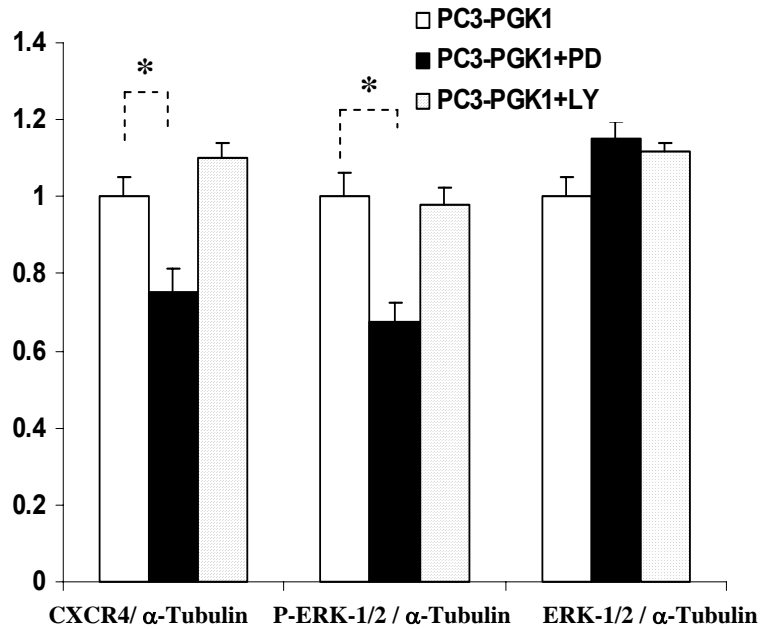
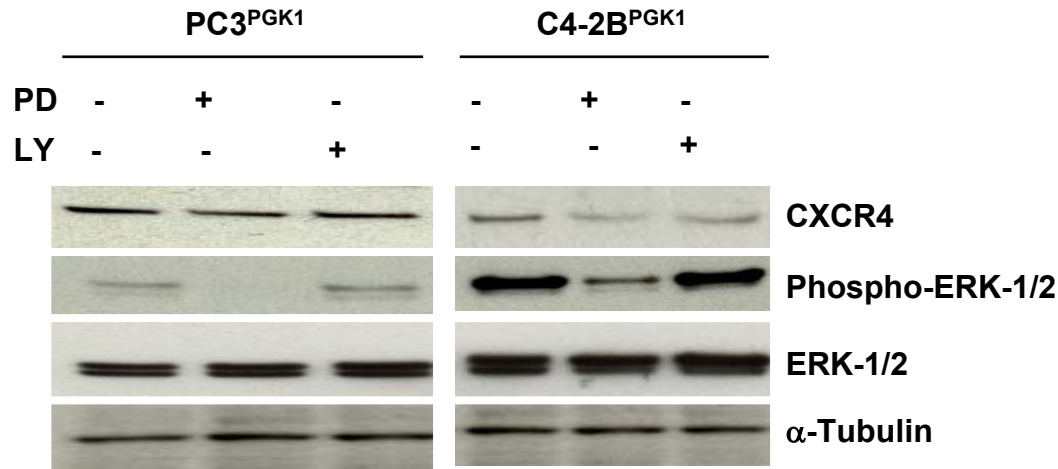


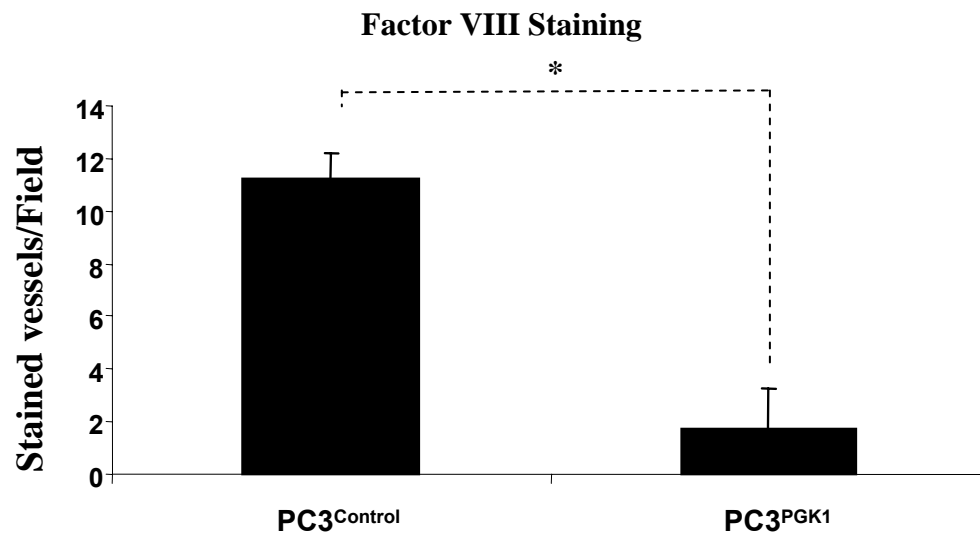
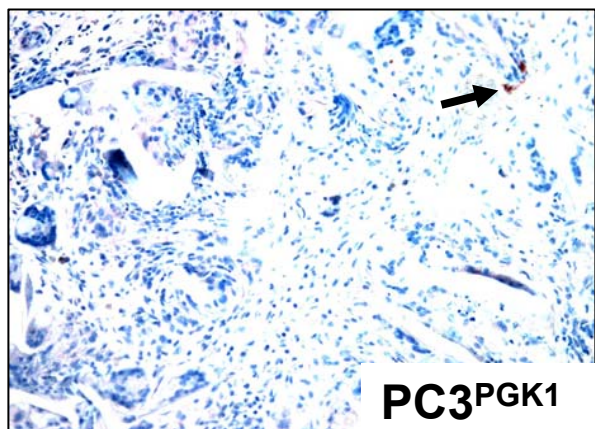
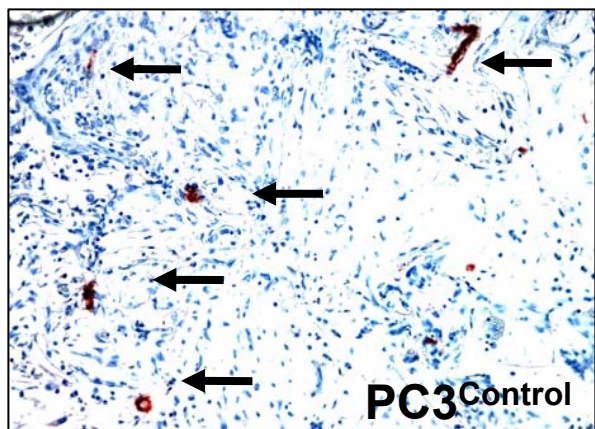
Wang *et al.* Supplemental Figure 2.

A.



Wang *et al.* Supplemental Figure 3.

B.



Wang *et al.* Supplemental Figure 4.

		C4-2B	LNCaP	PC3
up-regulated				
<i>Symbol</i>	<i>Description</i>	<i>Fold Induction</i>		
APAF1	Apoptotic protease activating factor	1.1	1.7	1.6
ATM	Ataxia telangiectasia mutated	10	1.5	8
CD44	CD44 antigen	14.2	3	1.8
RASA1	RAS p21 protein activator 1	1.1	2.8	1.1
MMP1	Matrix metalloproteinase 1	1.3	1.4	1.2
ITGA2	Integrin alpha 2	2.5	2.3	1.5
ITGB3	Integrin beta 3	1.6	1.1	1.6
down-regulated				
<i>Symbol</i>	<i>Description</i>	<i>Fold Induction</i>		
BAX	BCL2-associated X protein	2.8	1.2	1.1
BIRC5	Apoptosis inhibitor 4	2	1.6	1.2
CDK4	Cyclin-dependent kinase 4	1.4	2.2	1.1
EGFR	Epidermal growth factor receptor	1.1	2	1.4
	Nuclear factor kappa light polypeptide gene enhancer			
KB1a	in B cells inhibitor, alpha	7.1	7.7	6.2
SRC	Human c-src-1 proto-oncogene	1.8	2.1	2.3
TERT	Telomerase	3	7	1.5
THBS1	Homo sapiens thrombospondin 1	1.9	35	1.6
TNFRSF10B	Homo sapiens TRAIL receptor 2/DR5	1.7	2.5	6
VEGF	Vascular endothelial growth factor	4.1	5.9	1.4
CDH1	E-cadherin	2.1	2.8	1.6
CTNNB1	Catenin beta 1	1.2	2.4	1.9