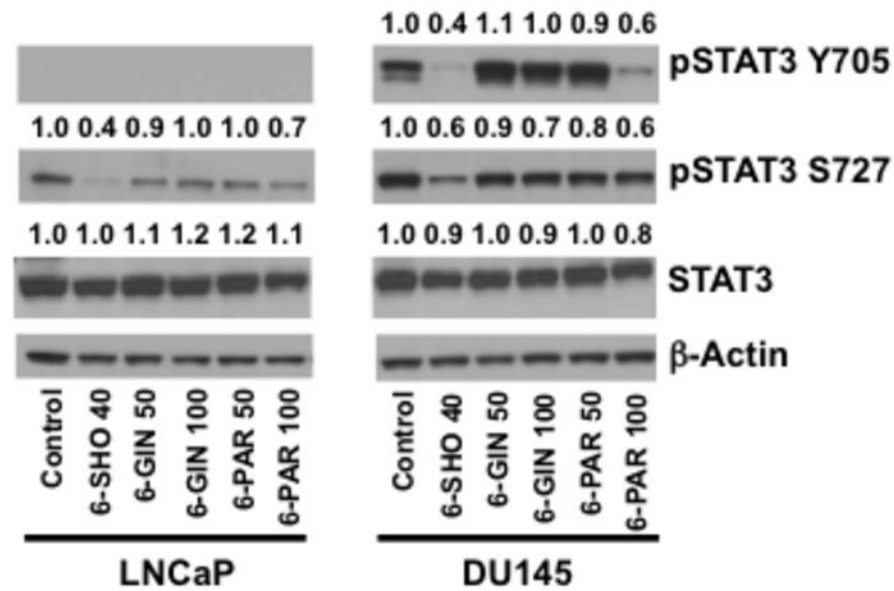
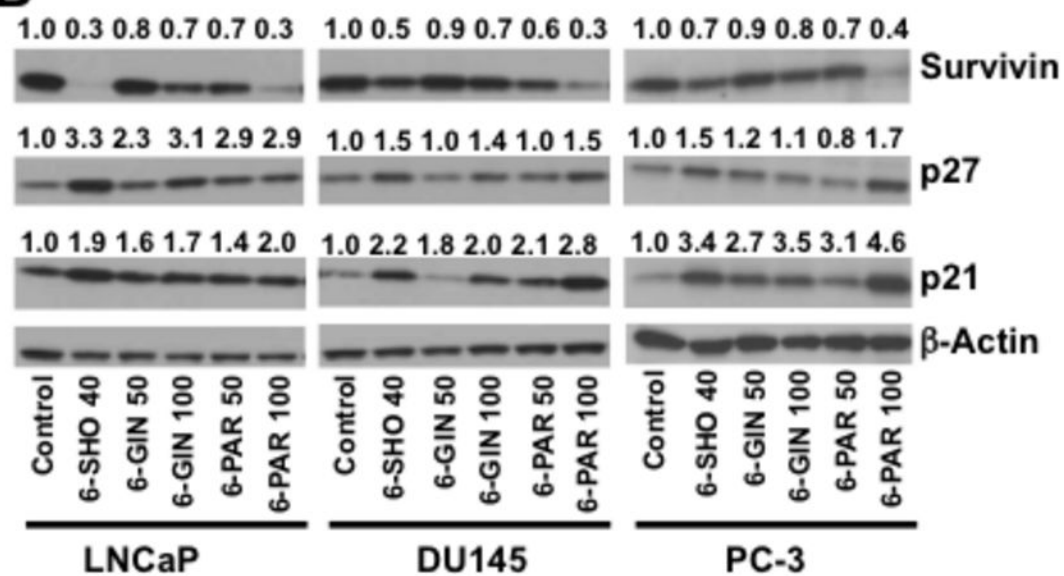


**A****B**

**Supplemental Figure 3.** Effects of ginger components, 6-GIN and 6-PAR, on human and mouse PCa cells. A, LNCaP and DU145 cells were treated with the indicated concentrations of 6-PAR, 6-GIN or 6-SHO and the levels of phospho STAT3<sup>Tyr705</sup>, phospho STAT3<sup>Ser727</sup> and STAT3 were measured by Western blot. B, LNCaP, DU145 and PC-3 cells were treated with the indicated concentrations of 6-PAR, 6-GIN or 6-SHO and the levels of survivin, p21 and p27 were measured by Western blot. Changes in relative band intensities (normalized to β-actin and total protein) for Western blot data are given at the top of each column. The results are significant ( $P < 0.05$ ) where a decrease in phosphorylation or protein level is  $\geq 40\%$ . In case of p21 and p27 blot, results are significant ( $P < 0.05$ ) where an increase in protein level is  $\geq 2$  fold.