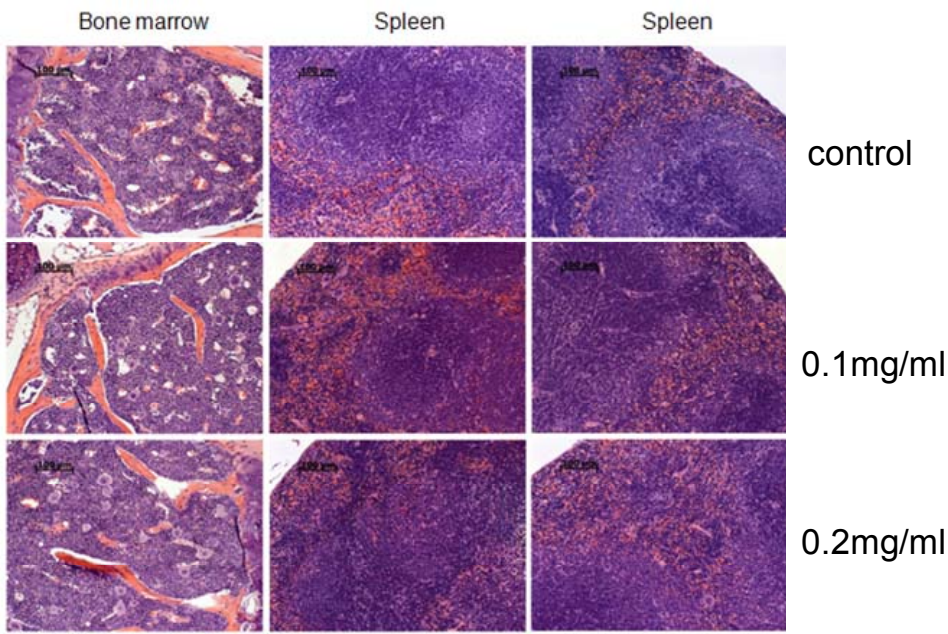
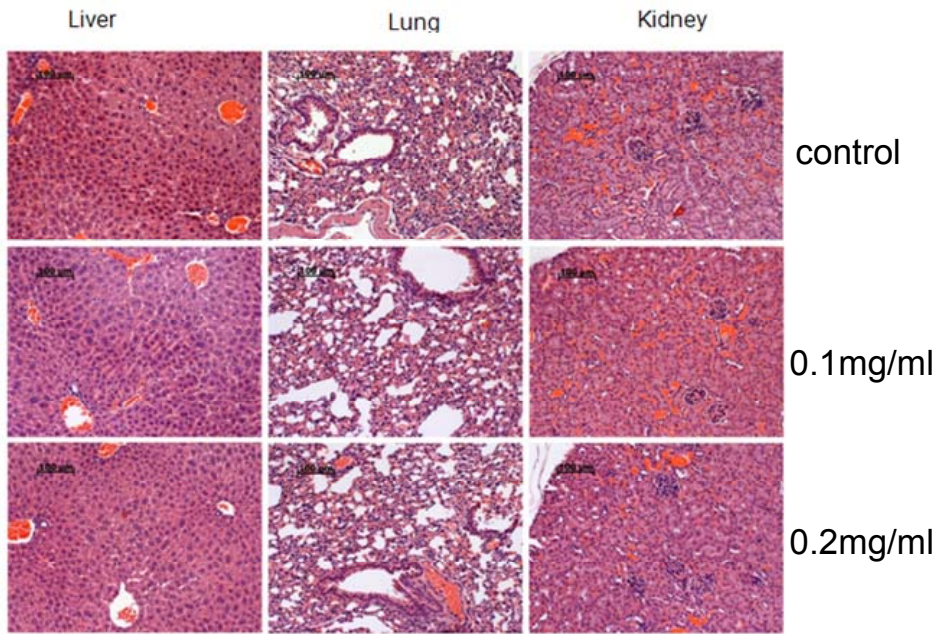


Supplementary Figure S1. **Absence of morphological changes in organs of MMTV-neu mice treated with Curaxin-137 from 4 to 14 weeks of age.** 5 animals per group were subjected to blind histopathological analysis. H&E-stained sections were prepared from most organs. A. Bone marrow samples (first column) of the three groups of mice showed densely packed hematopoietic cells of all lineages and various maturities, indicating active hematopoiesis. Spleen samples of mice of all groups (columns 2 and 3) had normal morphology with lymphoid cells in the white pulp and active hematopoiesis in the red pulp. B. Morphology of the liver (first column), lung (second column) and kidney (third column). Liver histology was normal in all mice with more compact cytoplasm of the periportal hepatocytes and more vacuolar cytoplasm of the cells around the terminal vein of the lobules. All mice also showed normal lung (alveoli, bronchioles and blood vessels) and kidney (glomeruli and tubules) histology. C. Morphology of the gastrointestinal tract. Normal morphology of the samples from the intestines of all mice with unaltered surface epithelium, villi, lamina propria, crypts and mucosa associated lymphoid tissue

A



B



C

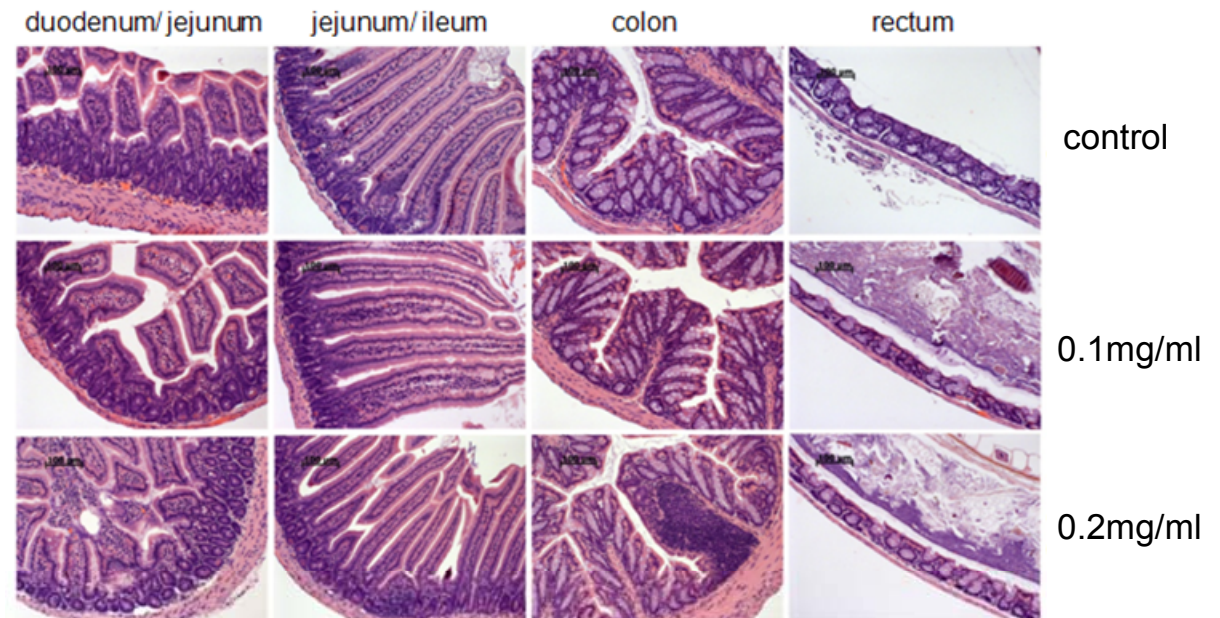


Figure S1