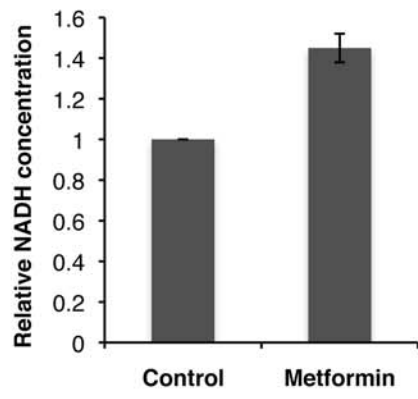


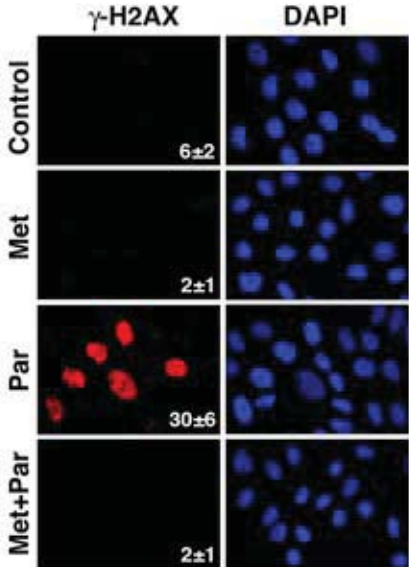
LEGENDS TO SUPPLEMENTARY FIGURES

Supplementary figure 1. NADH accumulation in mouse embryo fibroblasts is increased by metformin. MEFS were treated with 5mM metformin or vehicle for 48 hours, and NAD(P)H was measured by absorbance at 340 nm.

Supplementary figure 2. Metformin prevents paraquat-induced DNA damage in primary Human Mammary Epithelial Cells. Immunofluorescence for γ H2AX, a marker of DNA damage foci, was performed using cells mammary epithelial cells, as described in 'Methods'. Representative images are shown, and the mean number of cells with foci for each condition was quantified and is shown at the bottom right of each panel.



Supplemental figure 2



Supplementary figure 1