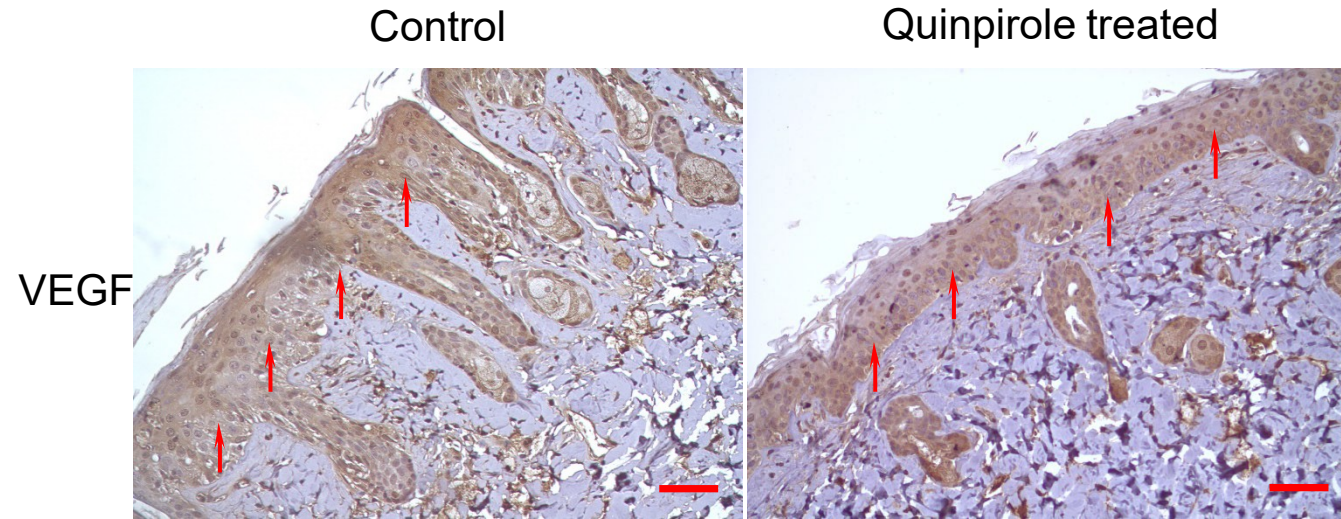
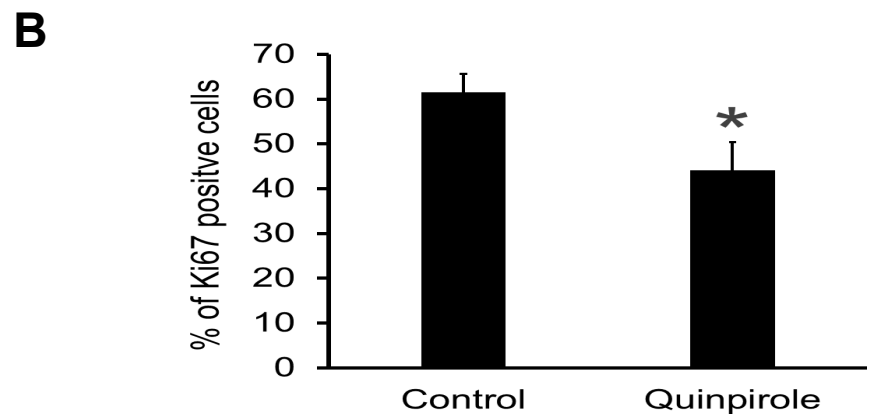
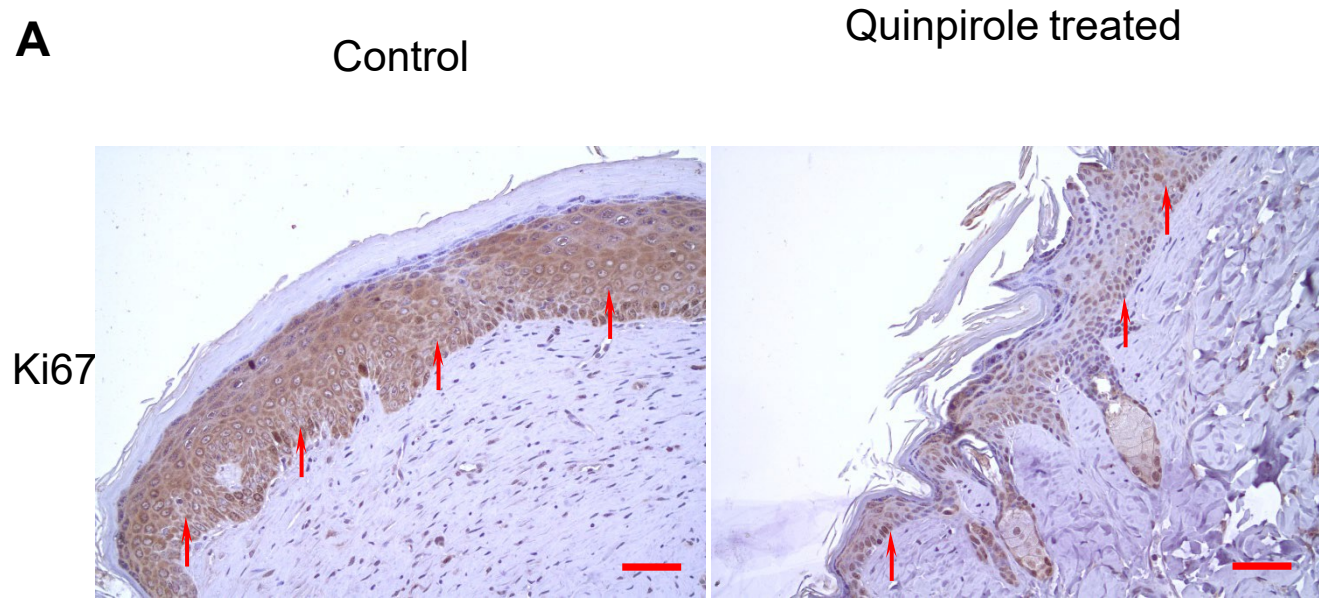


Supplementary Figures



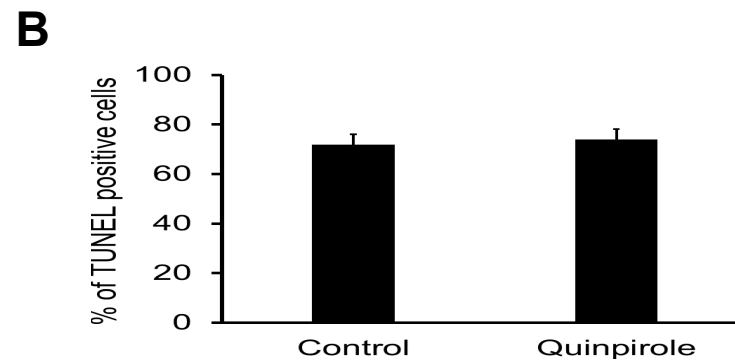
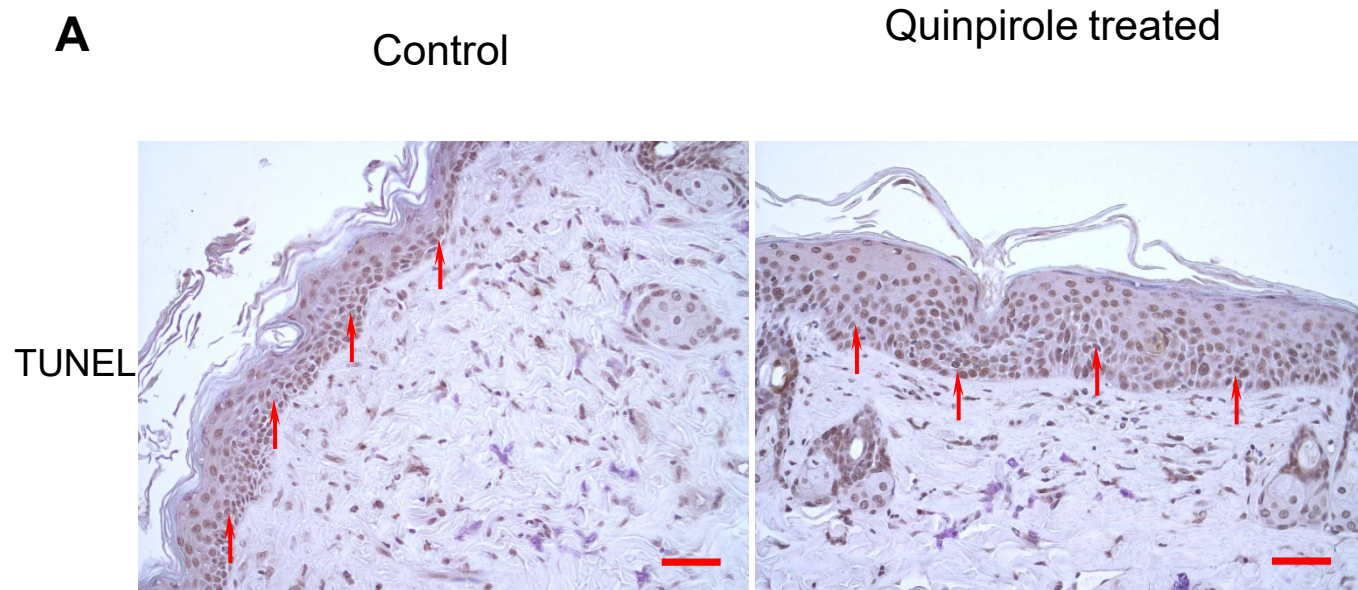
Supplemental Figure 1

Immunohistochemistry staining of VEGF-A in premalignant skin lesions from vehicle or quinpirole treated mice. Arrows are showing VEGF staining. Scale bar = 100 μ m.



Supplemental Figure 2

(A) Immunohistochemistry staining of Ki67 in premalignant skin lesions from vehicle or quinpirole treated mice. Arrows are showing Ki67 staining. Scale bar = 100 μ m. (B) Percentage of Ki67 positive cells. Data are expressed as mean \pm SEM. N=10. *P < 0.05 versus vehicle-treated control. The figure is representative of ten separate experiments with similar results.



Supplemental Figure 3

(A) In-Situ apoptosis detection assay (TUNEL Assay) in premalignant skin lesions from vehicle or quinpirole treated mice. Arrows are showing TUNEL staining. Scale bar = 100 μ m. (B) Percentage of TUNEL positive cells. Data are expressed as mean \pm SEM.

N=10. *P < 0.05 versus vehicle treated control. The figure is representative of ten separate experiments with similar results.