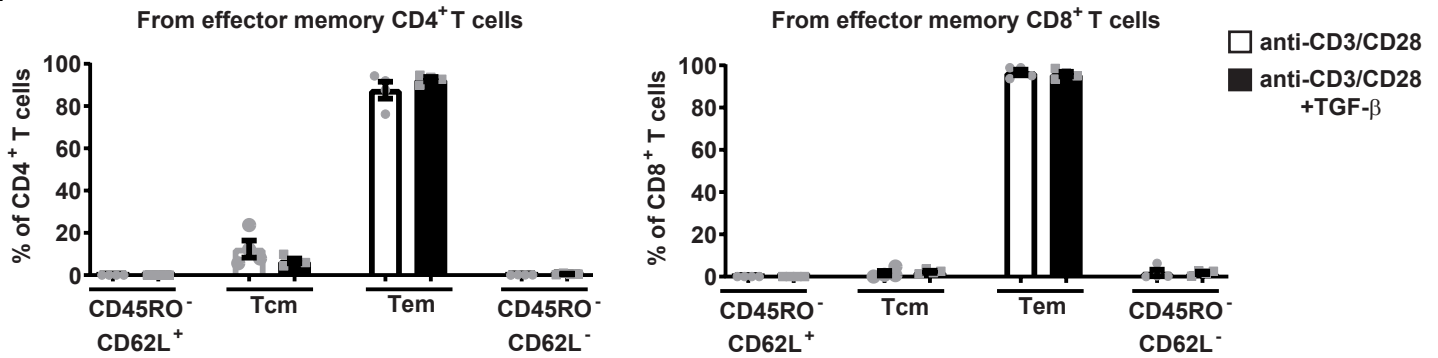
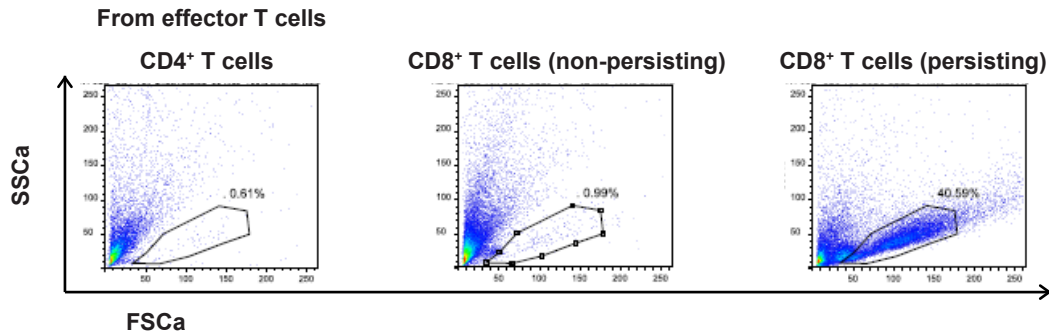


Figure S3

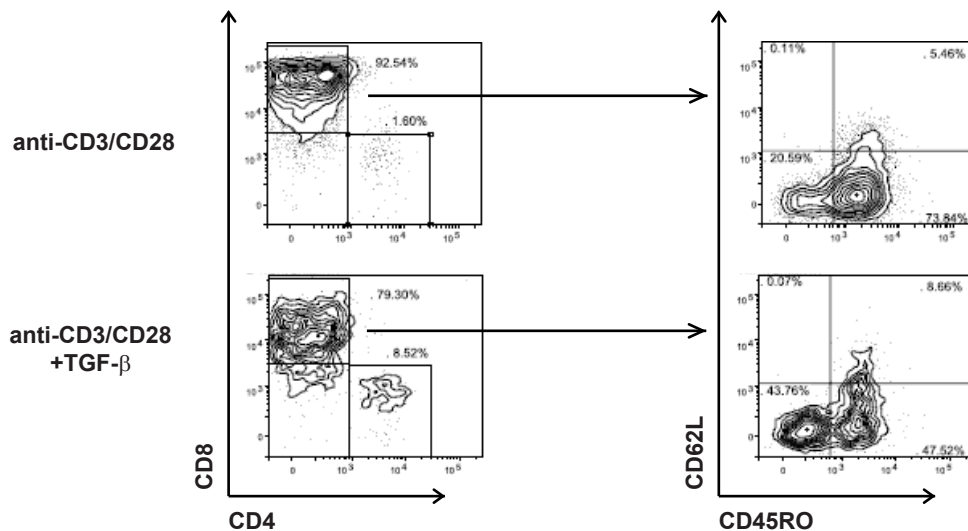
A



B



C



Supplementary Figure S3. Ex vivo stimulated Tem and Teff do not revert to Tcm. (A). Data compiled from 4 different donors. Sorted CD4⁺ or CD8⁺ effector memory T cells (Tem) were restimulated with anti-CD3/CD28 in the presence (black) or absence (white) of TGF-β for 7 days and re-assessed for CD45RO and CD62L expression. Data points are represented, along with the mean (histogram) and SEM. (B). Representative dot plots from similarly sorted and stimulated effector CD4⁺ and CD8⁺ T cells (Teff) showing that CD4⁺ Teff failed to persist in culture (4/4 donors) and that CD8⁺ Teff from only a fraction (2/4 donors) could be analyzed after 7 days in culture. The lymphoid gate is shown according to Forward (FSC) and Side scatter (SSC) in the control condition (anti-CD3/CD28 stimulation alone). (C). Persisting/expanded CD8⁺ T cells in 2/4 donors either kept a phenotype compatible with Teff (CD45RO⁻ CD62L⁻) or Tem (CD45RO⁺ CD62L⁻) in both control and TGF-β conditions.