

Figure S1

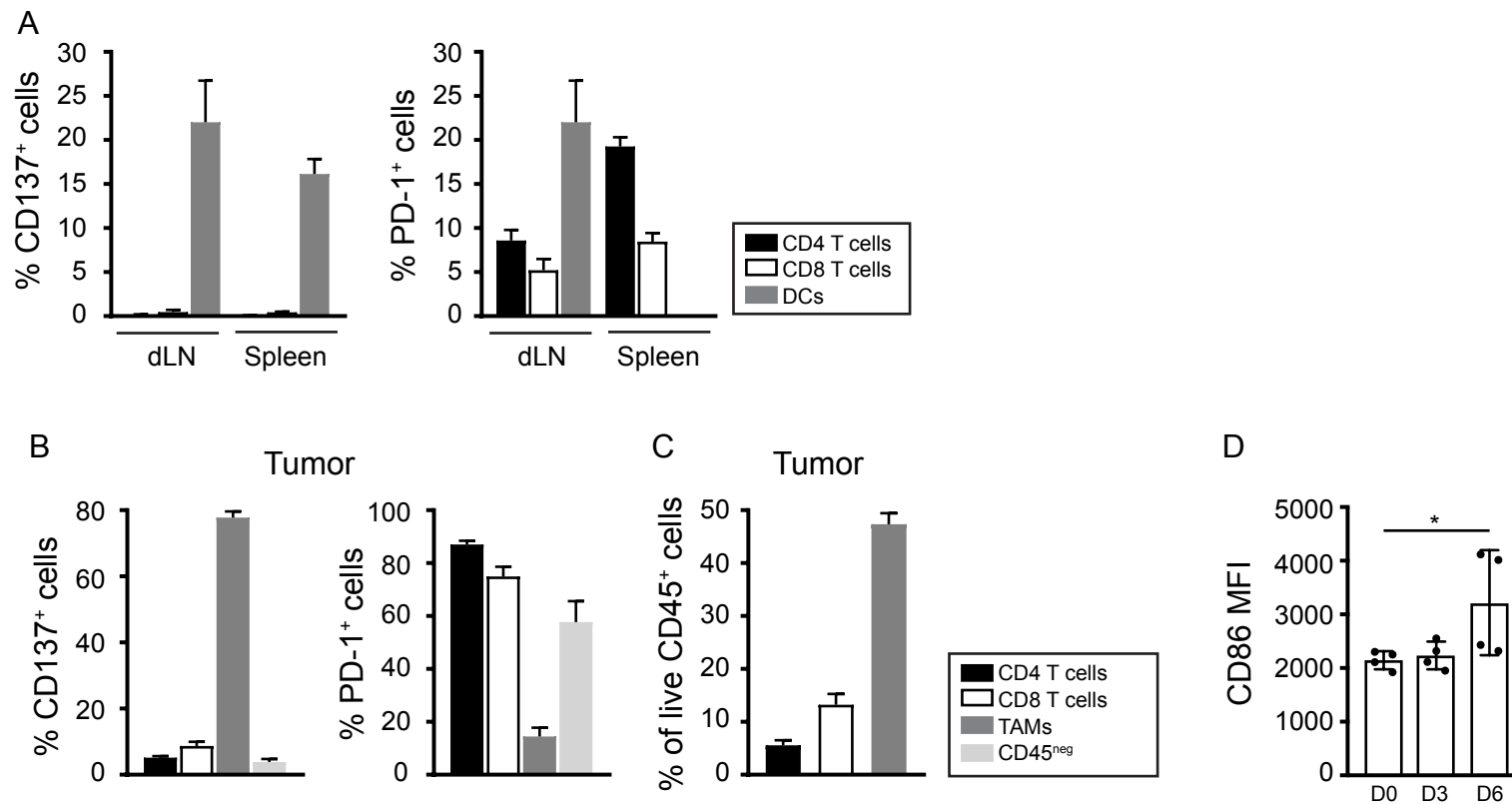


Figure S1. Related to Figure 1. Expression of the immunotherapy targets CD137 and PD-1 in AT-3 tumor-bearing mice. AT-3 tumor-bearing mice (n=3) were sacrificed, and the indicated tissues were harvested. (A) Percentage CD137⁺ and PD-1⁺ cells in the CD4⁺ T (TCR β ⁺ CD4⁺), CD8⁺ T (TCR β ⁺ CD8⁺), and dendritic cell (DCs; CD11c⁺MHCII⁺) populations measured in the tumor draining lymph node (dLN) and spleen. (B) Percentage of CD137⁺ and PD-1⁺ cells in the indicated cell populations isolated from the tumor tissue. TAMs; tumor-associated macrophages. (C) Percentage of CD4⁺, CD8⁺ T cells and TAMs within the CD45⁺ population isolated from the tumor tissue. (D) CD86 expression on AT-3 tumor-resident CD11c⁺MHCII⁺ cells before (D0), or on Day 3 (D3) or Day 6 (D6) after systemic administration of CD137 agonist antibody.