

Figure S2

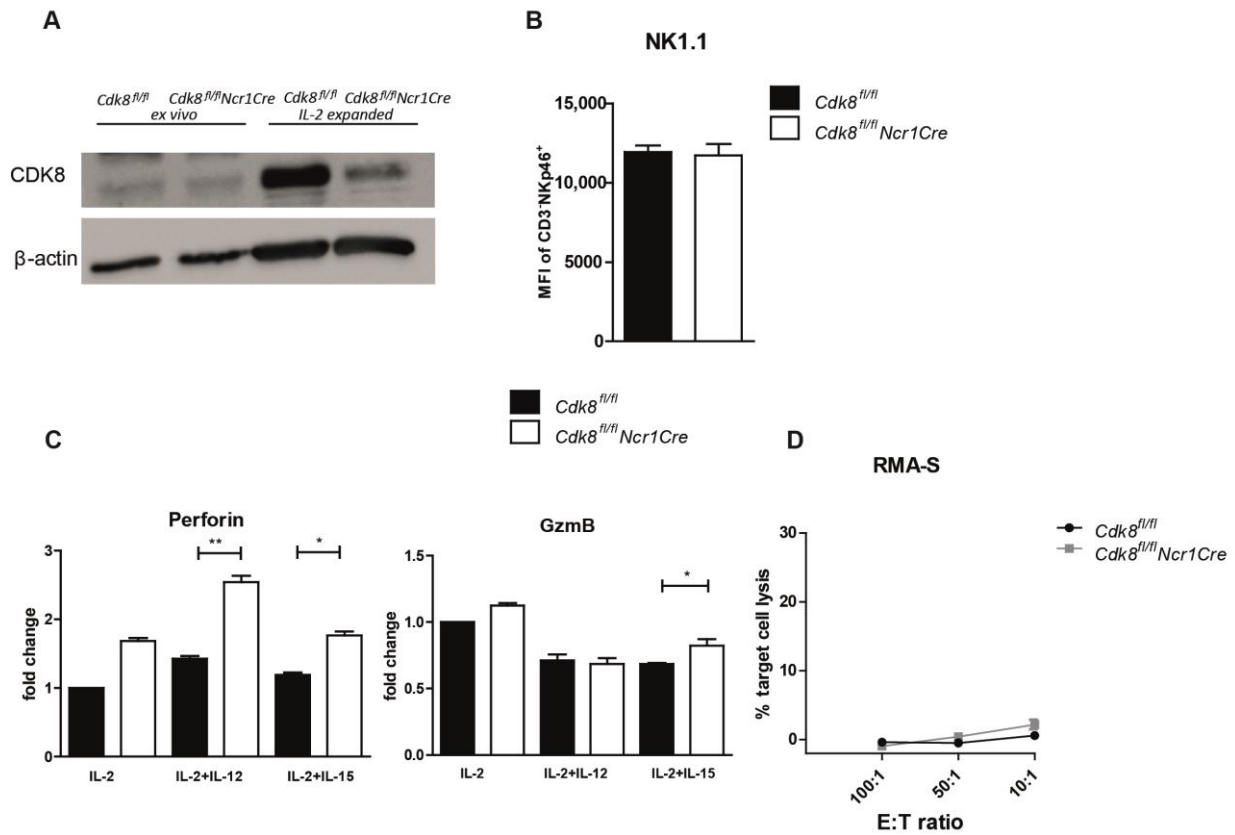


Figure S2. (A) *Ex vivo* or IL-2 expanded NK cells derived from *Cdk8^{fl/fl}* and *Cdk8^{fl/fl}Ncr1Cre* mice were analyzed for CDK8 protein expression by western blot. (B) The surface expression of the NK1.1 receptor was assessed by analyzing the MFI of CD3⁺NKp46⁺ NK cells. Bar graph shows mean \pm SEM of two independent experiments; n=5-6. (C) Western blots from Fig. 2E were quantified and the bar graphs present mean fold of change compared to IL-2 stimulated *Cdk8^{fl/fl}* cells from 3 exposures \pm SEM. (D) *Cdk8^{fl/fl}* and *Cdk8^{fl/fl}Ncr1Cre* splenocytes were incubated for 4h with CFSE-stained RMA-S cells in effector-to-target ratios of 100:1, 50:1 and 10:1. The specific lysis of target cells was assessed by flow cytometry. Symbols and error bars represent mean \pm SEM of technical triplicates from one experiment. * p < 0.05; ** p < 0.01.