

CANCER DISCOVERY CONTENTS

JUNE 2012 ■ VOLUME 2 ■ NUMBER 6

IN THIS ISSUE Highlighted research articles473

NEWS IN BRIEF Important news stories affecting the community.....476

NEWS IN DEPTH Q&A: Lisa Coussens on Immune Reprogramming478

The Right Roadmap for Personalized Tests.....479

Do Ask, Don't Tell?480

RESEARCH WATCH Selected highlights of recent articles of exceptional significance from the cancer literature.481

ONLINE For more News and Research Watch, visit Cancer Discovery online at <http://CDnews.aacrjournals.org>

VIEWES In The Spotlight

Tracking Evolution of BRCA1-Associated Breast Cancer486

J. Jonkers

Commentary on Martins et al., p. 503

miR-23a, a Critical Regulator of "migR"ation and Metastasis in Colorectal Cancer489

Z. Wang, W. Wei, and F.H. Sarkar

Commentary on Jahid et al., p. 540

Apples to Origins: Identifying Brain Tumor Stem Cell Genes by Comparing Transcriptomes of Normal and Cancer Stem Cells492

M. Wortham and H. Yan

Commentary on Corno et al., p. 554

REVIEW ALKoma: A Cancer Subtype with a Shared Target.....495

H. Mano

RESEARCH BRIEF Evolutionary Pathways in BRCA1-Associated Breast Tumors.....503



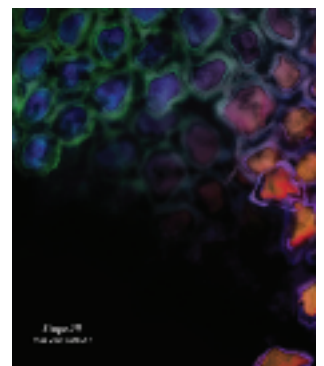
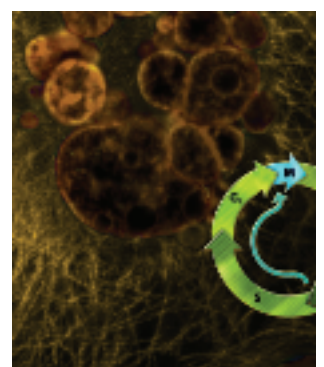
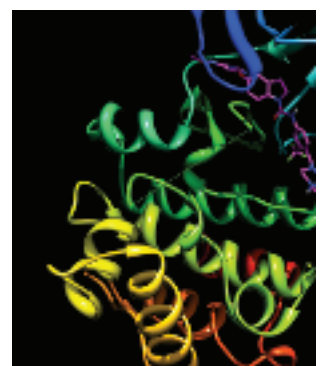
F.C. Martins, S. De, V. Almendro, M. Gönen, S.Y. Park, J.L. Blum, W. Herlihy, G. Ethington, S.J. Schnitt, N. Tung, J.E. Garber, K. Fetten, F. Michor, and K. Polyak

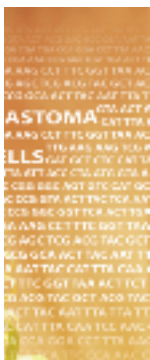
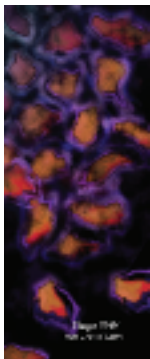
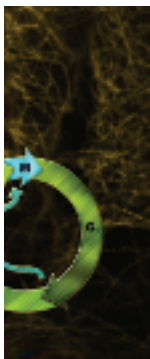
Précis: BRCA1 loss of heterozygosity is frequently preceded by PTEN loss or TP53 mutation in BRCA1-mutant breast cancers.

RESEARCH ARTICLES Modulation of Activation-Loop Phosphorylation by JAK Inhibitors Is Binding Mode Dependent ...512

R. Andraas, Z. Qian, D. Bonenfant, J. Rubert, E. Vangrevelinghe, C. Scheufler, F. Marque, C.H. Régnier, A. De Pover, H. Ryckelynck, N. Bhagwat, P. Koppikar, A. Goel, L. Wyder, G. Tavares, F. Baffert, C. Pissot-Soldermann, P.W. Manley, C. Gaul, H. Voshol, R.L. Levine, W.R. Sellers, F. Hofmann, and T. Radimerski

Précis: Type II JAK inhibition prevents the sustained activation loop phosphorylation observed after treatment with type I ATP-competitive JAK inhibitors.





Forced Mitotic Entry of S-Phase Cells as a Therapeutic Strategy Induced by Inhibition of WEE1..... 524

M. Aarts, R. Sharpe, I. Garcia-Murillas, H. Gevensleben, M.S. Hurd, S.D. Shumway, C. Toniatti, A. Ashworth, and N.C. Turner

Précis: In combination with chemotherapy, WEE1 inhibitors can force cancer cells with incompletely replicated DNA into mitosis, leading to abnormal mitoses and cell death.

miR-23a Promotes the Transition from Indolent to Invasive Colorectal Cancer 540

S. Jahid, J. Sun, R.A. Edwards, D. Dizon, N.C. Panarelli, J.W. Milsom, S.S. Sikandar, Z.H. Gümüş, and S.M. Lipkin

Précis: Upregulation of miR-23a in the early stages of colorectal cancer stimulates cell migration and invasion.

Gene Signatures Associated with Mouse Postnatal Hindbrain Neural Stem Cells and Medulloblastoma Cancer Stem Cells Identify Novel Molecular Mediators and Predict Human Medulloblastoma Molecular Classification..... 554

D. Corno, M. Pala, M. Cominelli, B. Cipelletti, K. Leto, L. Croci, V. Barili, F. Brandalise, R. Melzi, A. Di Gregorio, L. Sergi Sergi, L.S. Politi, L. Piemonti, A. Bulfone, P. Rossi, F. Rossi, G.G. Consalez, P.L. Poliani, and R. Galli

Précis: Murine medulloblastoma cancer stem cells that recapitulate distinct human molecular medulloblastoma subtypes can be valuable preclinical models.

For more News and Research Watch, visit *Cancer Discovery* online at <http://CDnews.aacrjournals.org>. Online-only News stories include the following:

- Nanoparticles Could Pinpoint Brain Tumors
- Modified T Cells Survive Over Decade
- Gene Expression Signature Predicts Lung Cancer Relapse
- Assay Could Identify Indolent Prostate Cancers

ON THE COVER

Martins and colleagues determined the order of *BRCA1* LOH, *PTEN* loss, and *TP53* mutation in single cells from breast tumors with germline *BRCA1* mutations. Surprisingly, *BRCA1* LOH was rarely the initiating event, and wild-type *BRCA1* expression was not lost in every cell within a tumor. Instead, *PTEN* loss occurred first in the majority of cases, particularly in basal-like tumors, and *TP53* mutation was the initiating event in most luminal tumors. These findings provide insight into the evolution of *BRCA1*-mutant breast cancers and suggest that *BRCA1* loss is not a rate-limiting step in breast tumorigenesis. For details, please see the article by Martins and colleagues on page 503.

